

5+/- Acres I-70 Frontage Wentzville, MO



Great Commercial Development Potential

High Visibility to Interstate 70

445' of Road Frontage

All Utilities available to Site

2 Miles West of Lake St. Louis Blvd. Interchange

Zoned C-3 Highway Commercial

Additional 18 Acres Available

\$3/Sq. ft.

For more information call:

Rick Meyer or Harry Daw

314-565-7824 or 314-471-2909

rick@MeyerListings.com

hdaw@LeahyPropertiesLLC.com



636-462-5555

www.meyerlistings.com

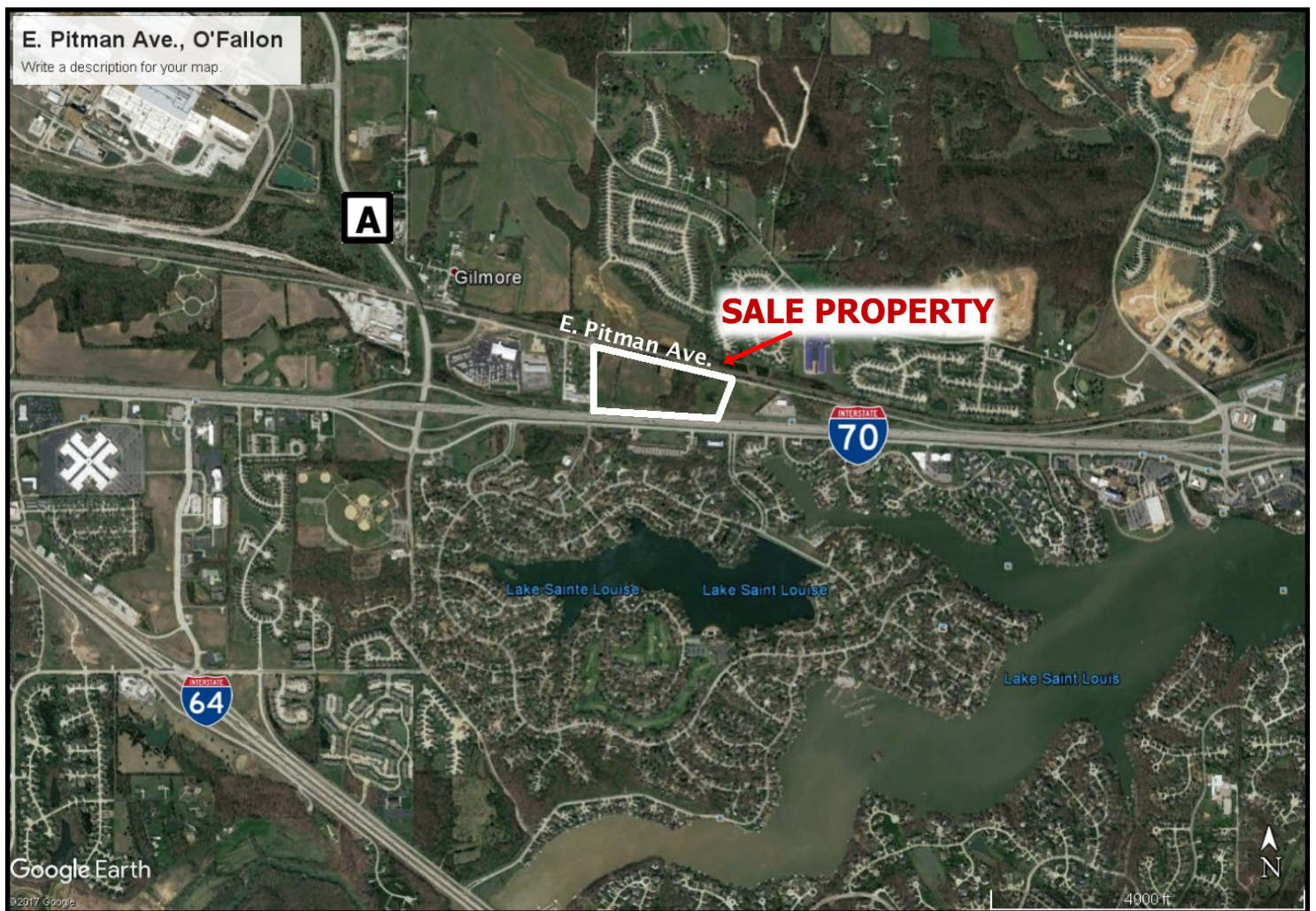


314-833.8335

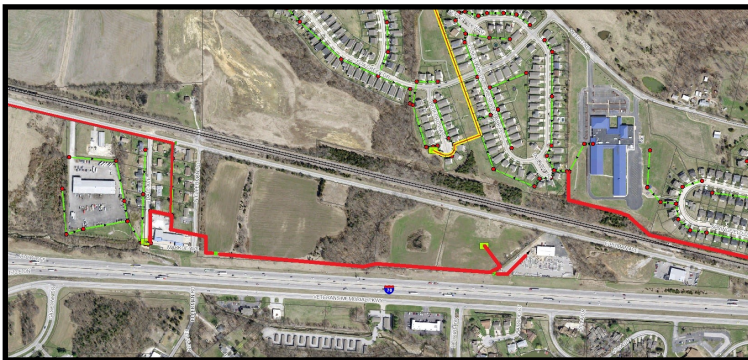
www.leahypropertiesllc.com

E. Pitman Ave., O'Fallon

Write a description for your map.



E. PITMAN AVE SEWER



E. PITMAN AVE WATER



From I-70 and Lake St. Louis Blvd. take North Service Rd (E. Pitman Ave.) going west 1.5 miles to property on Right.

MEYER & COMPANY REAL ESTATE
192 N. Lincoln Drive
Troy, MO 63379

636-462-5555

www.meyerlistings.com