



**Blake Taylor**

**WCCR**

West Coast Commercial Realty

**Shoreline Office @ 19909**  
19909 Ballinger Way NE, Shoreline, WA 98155



## SITE DETAILS

19909 Ballinger Way NE,  
Shoreline, WA 98155

2,085 SF office fronting Ballinger Way NE

6 private offices/conference room/reception/  
kitchen

Large surface level parking lot

Multi-Tenant office complex

Pylon signage on facing Ballinger Way NE

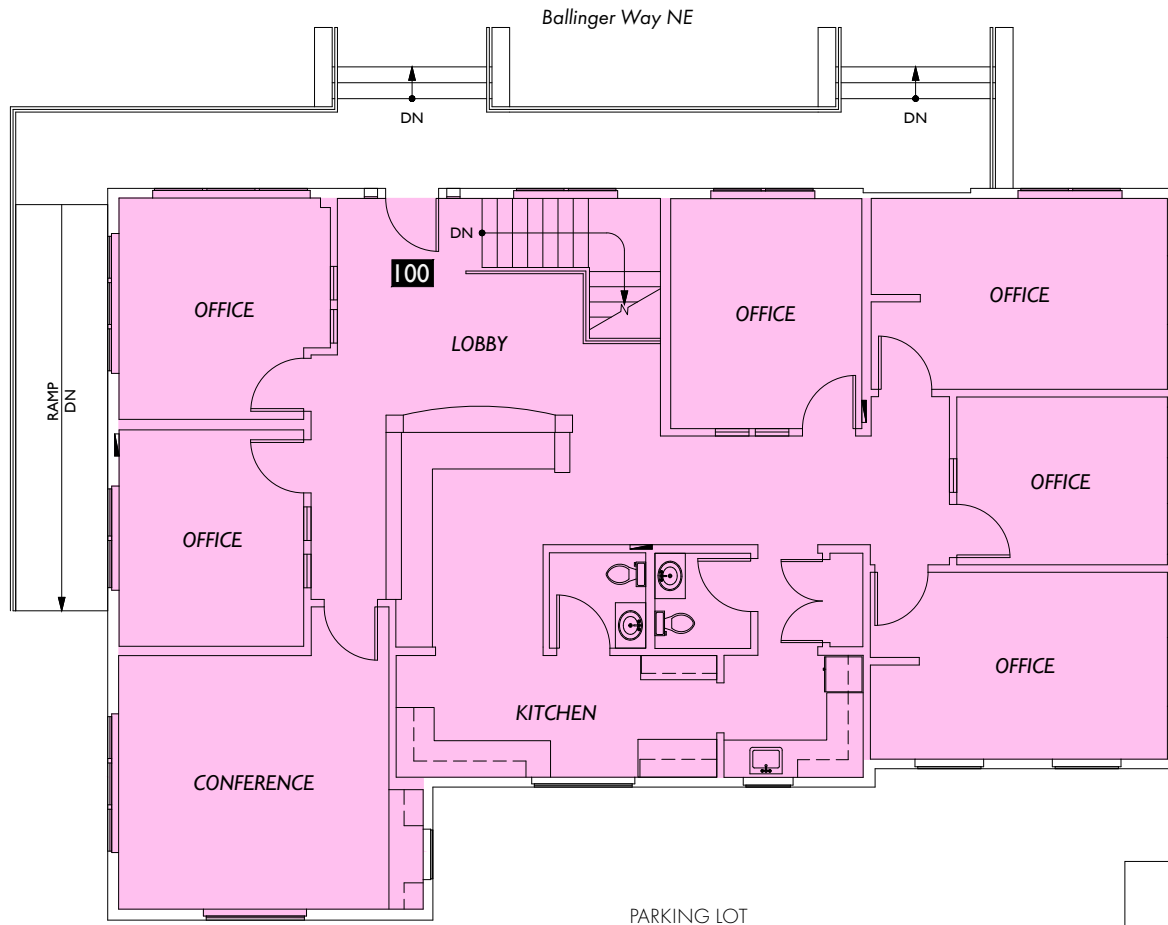
Available January 2023 (potentially sooner)

Blocks to I-5 onramp and King/Snohomish  
County border





**Suite 100 -  
2,085 SF  
AVAILABLE**



Blake Taylor

(206) 283-5212

[www.wccommercialrealty.com](http://www.wccommercialrealty.com)

**WCCR**

West Coast Commercial Realty

DISCLAIMER: The above information has been secured from sources believed to be reliable, however, no representations are made to its accuracy. Prospective tenants or buyers should consult their professional advisors and conduct their own independent investigation. Site plan and configuration are subject to change. Properties are subject to change in price and/or availability without notice. West Coast Commercial Realty, LLC

SEATTLE

EDMONDS



SHORELINE

MOUNTLAKE TERRACE

19th Avenue NE

Ballinger Way NE

SHORELINE OFFICE @ 19909



LAKE FOREST PARK