

# JIMMY DOOLITTLE OFFICE

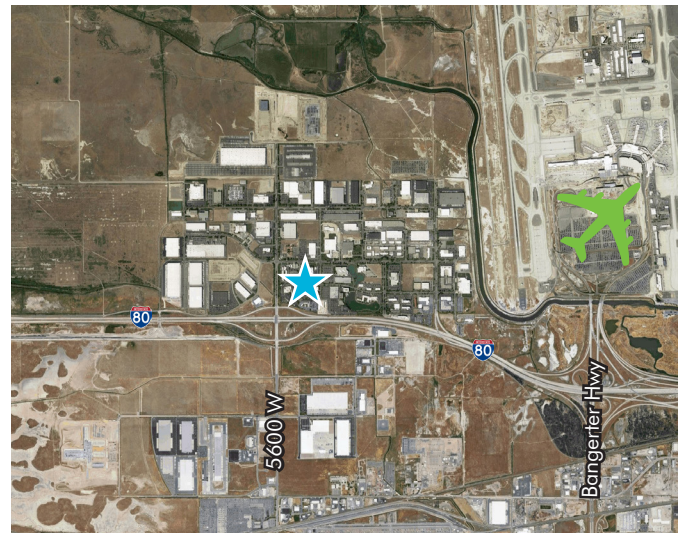
295 JIMMY DOOLITTLE DR | SALT LAKE CITY, UT



## PROPERTY FEATURES

### GREAT OWNER/USER OPPORTUNITY

- Available: 14,500 RSF
- Parking Ratio: 5/1,000
- Located within the Salt Lake International Center
- Easy access to I-80 and Salt Lake International Airport
- Great access to amenities
- Recently upgraded with new paint and parking lot
- Great single tenant opportunity
- Lease Rate: \$18.00/RSF, Full Service
- Sale Price: \$1,950,000



## CONTACT US

### ERIC SMITH

Senior Vice President  
+1 801 869 8008  
eric.smith@cbre.com

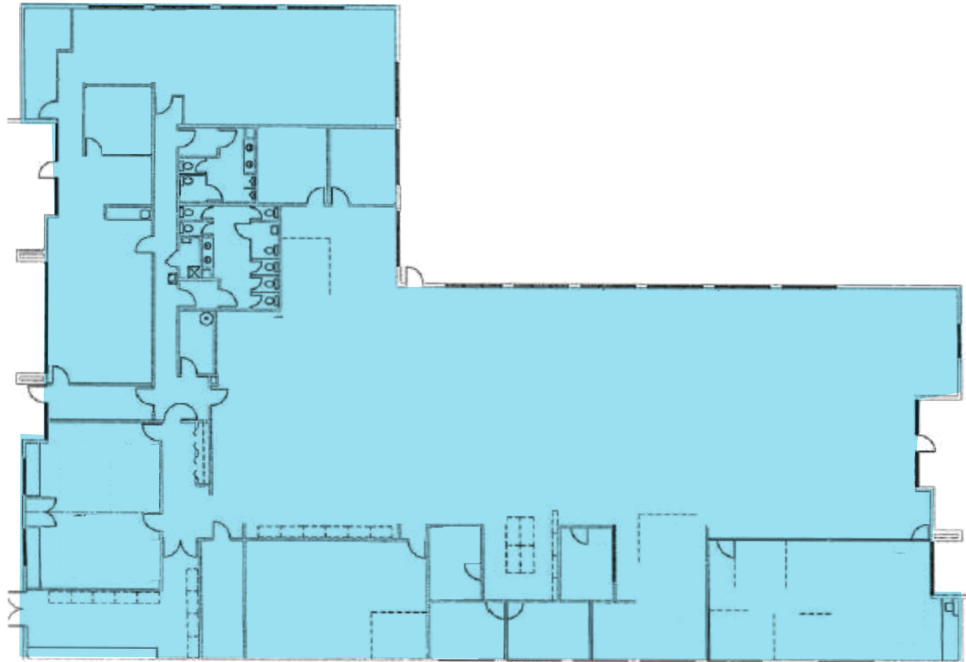
### KREG PETERSON

First Vice President  
+1 801 869 8092  
kreg.peterson@cbre.com

### LAURIE ADAIR

Senior Associate  
+1 801 869 8009  
laurie.adair@cbre.com

## FLOOR PLAN



## LOCATION MAP



© 2019 CBRE, Inc. All rights reserved. This information has been obtained from sources believed reliable, but has not been verified for accuracy or completeness. You should conduct a careful, independent investigation of the property and verify all information. Any reliance on this information is solely at your own risk. CBRE and the CBRE logo are service marks of CBRE, Inc. All other marks displayed on this document are the property of their respective owners, and the use of such logos does not imply any affiliation with or endorsement of CBRE. Photos herein are the property of their respective owners. Use of these images without the express written consent of the owner is prohibited.