

www.3000OakRoad.com

CLASS A OFFICE SPACE FOR LEASE

3000 OAK ROAD

3000 Oak Road, Walnut Creek, CA

102,200 SF Class A Office Building located at the Pleasant Hill BART Station in the Contra Costa Transit Village.

LEASING INFORMATION

Bob Maderious

Senior Vice President

925.357.2010

bob.maderious@transwestern.com

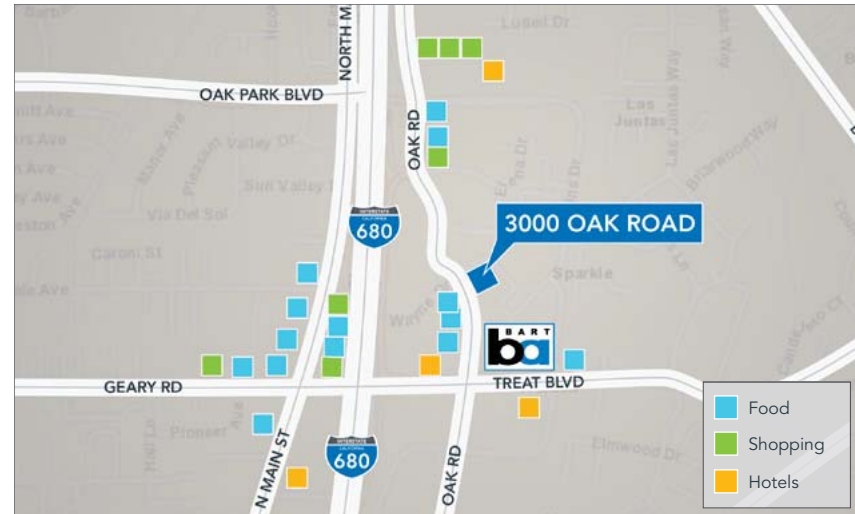
CA DRE LIC. 00616136

 **TRANSWESTERN**[®]

www.transwestern.com/walnutcreek

OFFICE SPACE FOR LEASE | www.3000OakRoad.com

3000 Oak Road, Walnut Creek, CA



AVAILABLE SPACE

- Suite 150: ±4,012 RSF
- Suite 250: ±4,424 RSF
- Suite 625: ±3,247 RSF

PROPERTY HIGHLIGHTS

- 102,200 SF of Class A Office Space
- Adjacent to the Pleasant Hill BART station
- Three (3) levels of secured parking (3/1,000)
- Next to private park, close to walking trails & restaurants
- Efficient rectangular floor plates with an abundant glass line
- Member building of the Contra Costa Centre Association with all related benefits including Shuttle transportation

LEASING INFORMATION

Bob Maderious

Senior Vice President

925.357.2010

bob.maderious@transwestern.com

CA DRE LIC. 00616136



T TRANSWESTERN®

2175 N. California Blvd., Suite 415
Walnut Creek, CA 94596

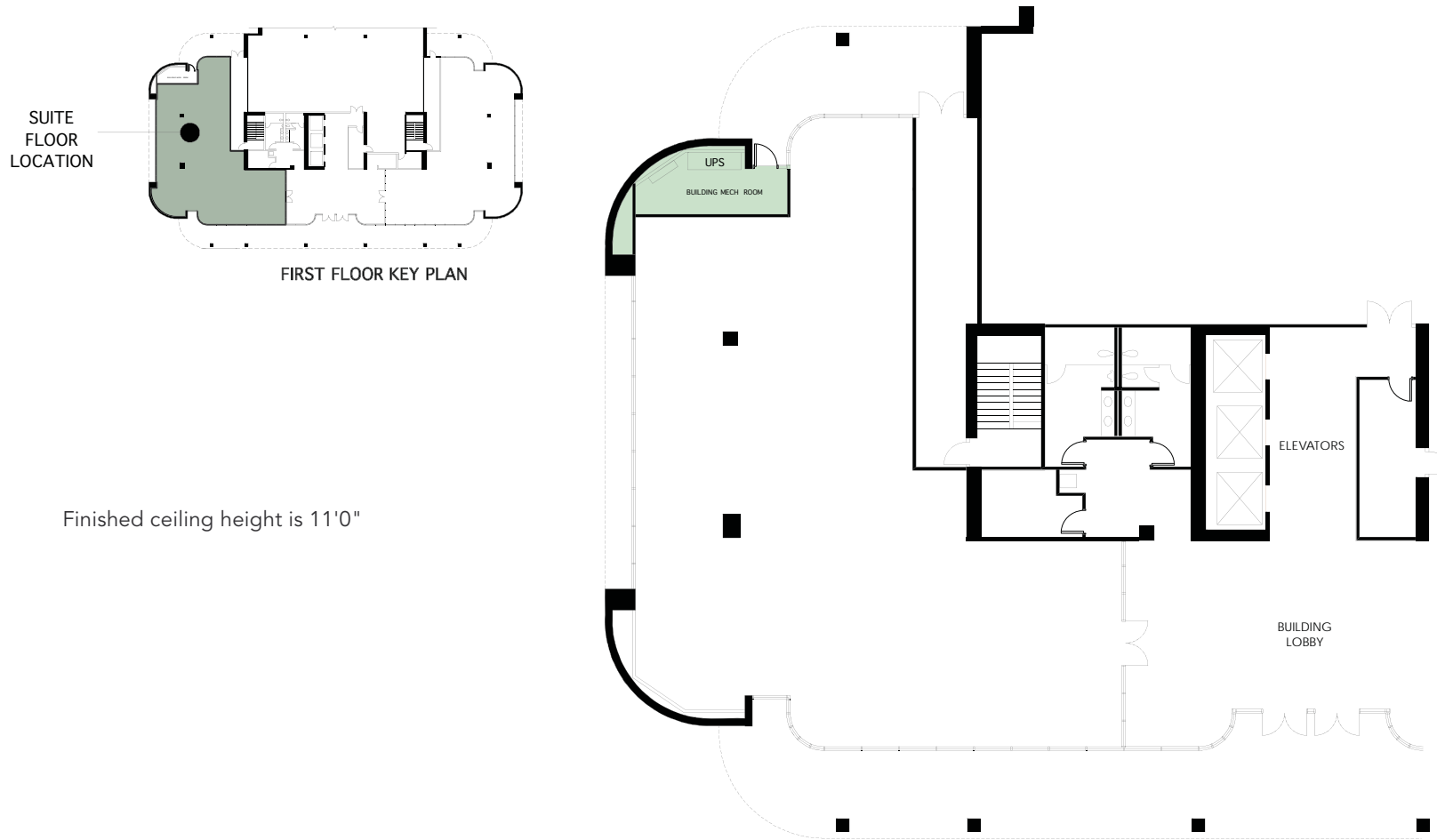
CA BROKER LIC. 01263636
T 925.357.2000

www.transwestern.com/walnutcreek

The information provided herein was obtained from sources believed reliable; however, Transwestern makes no guarantees, warranties or representations as to the completeness or accuracy thereof. The presentation of this property is submitted subject to errors, omissions, change of price or conditions, prior sale or lease, or withdrawal without notice. Copyright © 2020 Transwestern.

SUITE 150: ±4,012 RSF

Plans not to scale



LEASING INFORMATION

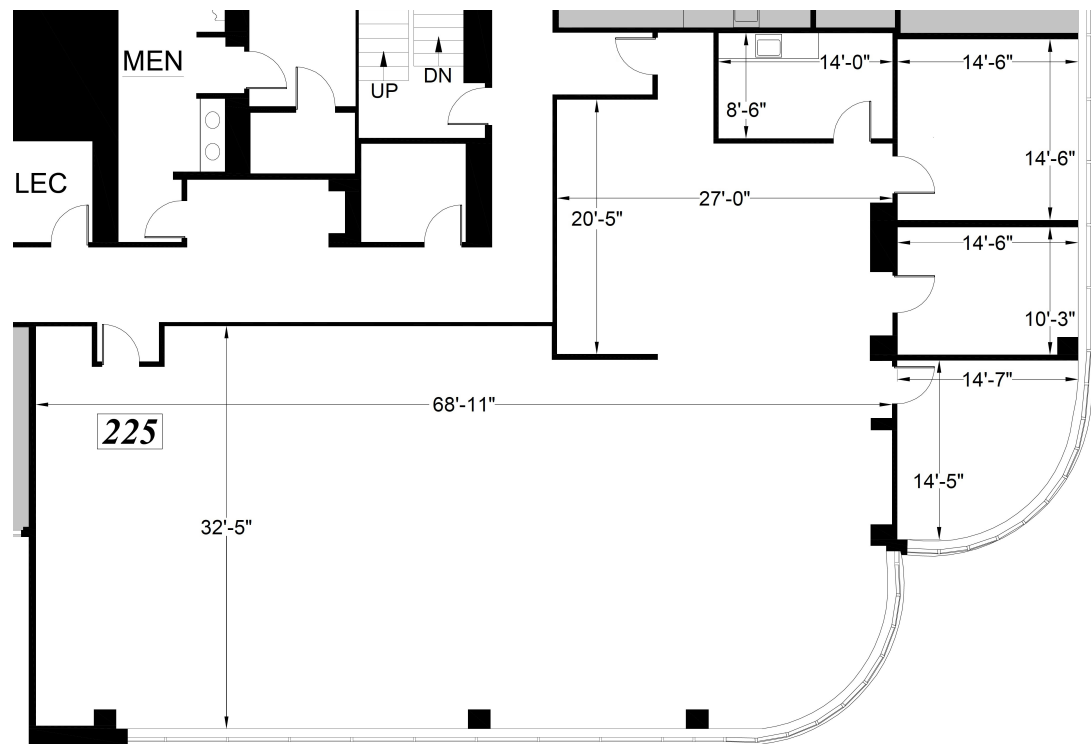
Bob Maderious
Senior Vice President
925.357.2010
bob.maderious@transwestern.com
CA DRE LIC. 00616136



2175 N. California Blvd., Suite 415
Walnut Creek, CA 94596
CA BROKER LIC. 01263636
T 925.357.2000

SUITE 250: ±4,424 RSF

Plans not to scale



LEASING INFORMATION

Bob Maderious

Senior Vice President

925.357.2010

bob.maderious@transwestern.com

CA DRE LIC. 00616136



2175 N. California Blvd., Suite 415
Walnut Creek, CA 94596

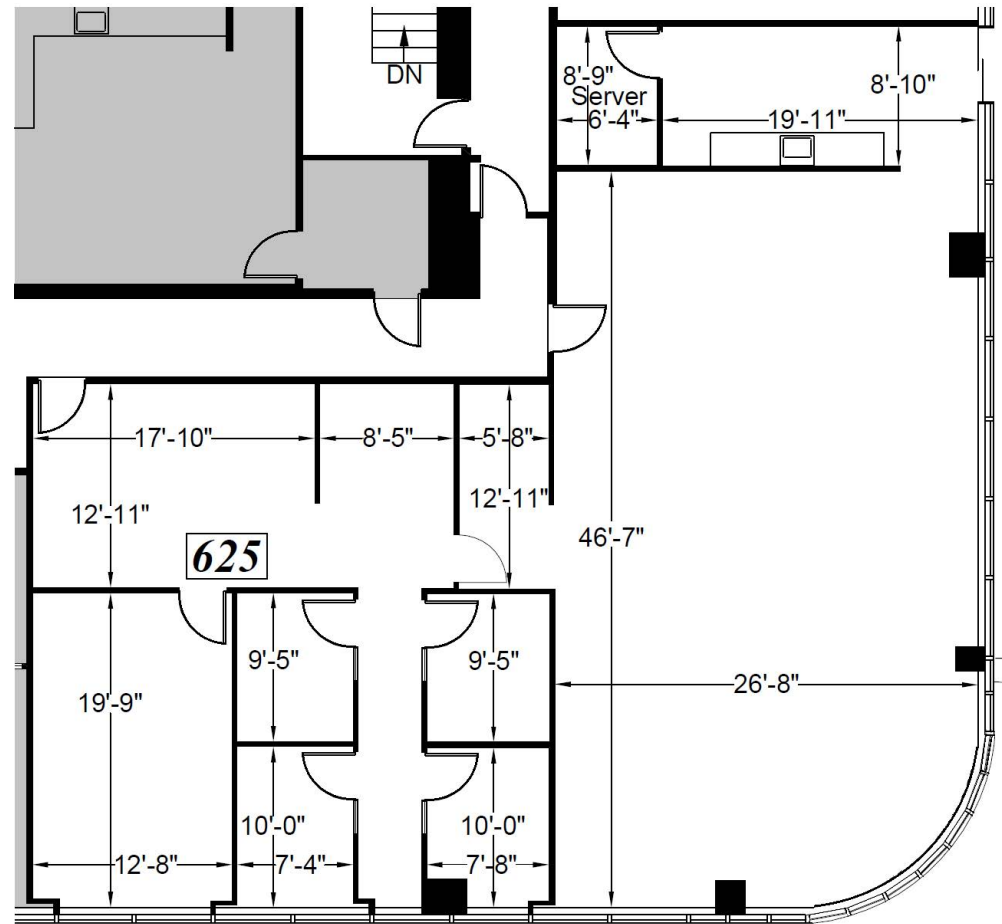
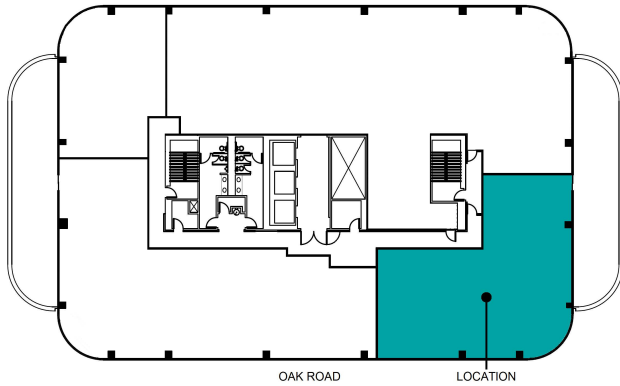
CA BROKER LIC. 01263636

T 925.357.2000

www.transwestern.com/walnutcreek

SUITE 625: ±3,247 RSF

Plans not to scale



LEASING INFORMATION

Bob Maderious

Senior Vice President

925.357.2010

bob.maderious@transwestern.com

CA DRE LIC 00616136



2175 N. California Blvd., Suite 415
Walnut Creek, CA 94596

CABROKERLIC. 01263636
T 925.357.2000

www.transwestern.com/walnutcreek