



700 | KEARNY

CORNER RETAIL/CAFE FOR LEASE

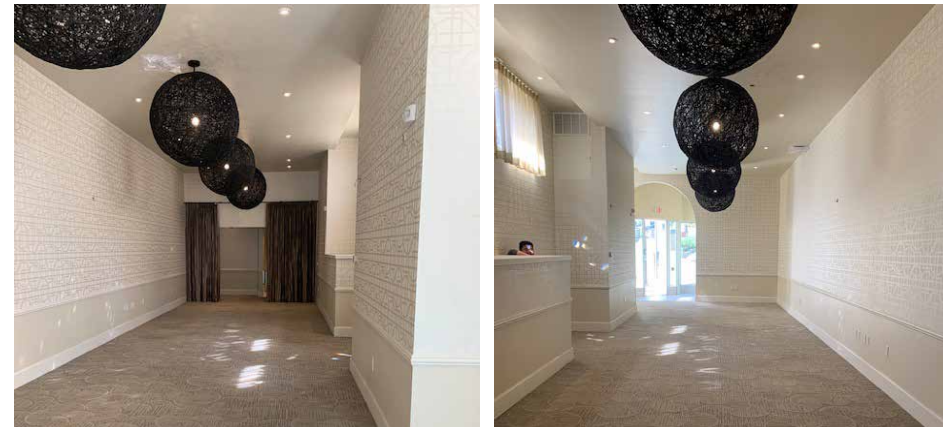
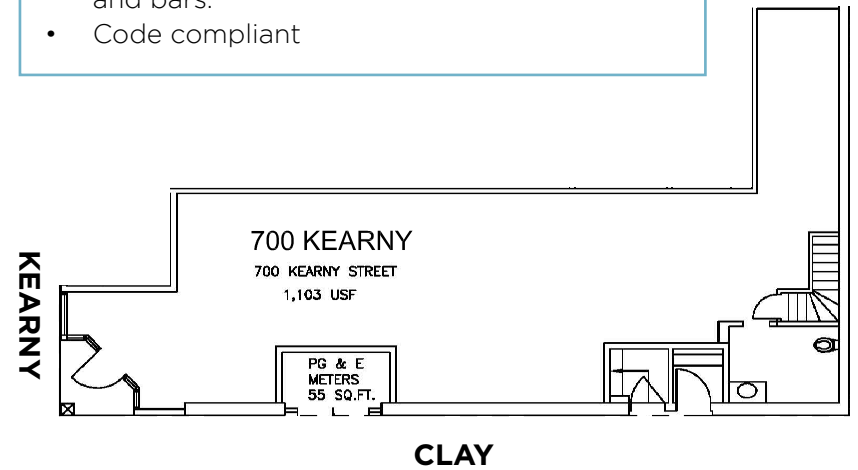
maven
RETAIL



700 Kearny situated at the corner of Kearny & Clay Streets, also at the foot of the Transamerica Pyramid, and at a choice intersection of San Francisco's North Beach, Financial District, Jackson Square and Chinatown districts. Recent ownership has renovated and modernized the building, upgrading storefronts and creating a unique retail location for the urban professionals and neighbors living and working in the surrounding neighborhoods.

FEATURES

- +/- 1,103 SF plus some additional basement
- Renovated storefront
- Excellent foot traffic
- Excellent visibility
- Lower Level Storage
- Close to BART/MUNI, and some of San Francisco's best shops, restaurants, and bars.
- Code compliant





ISABEL MARANT



ROKA AKOR



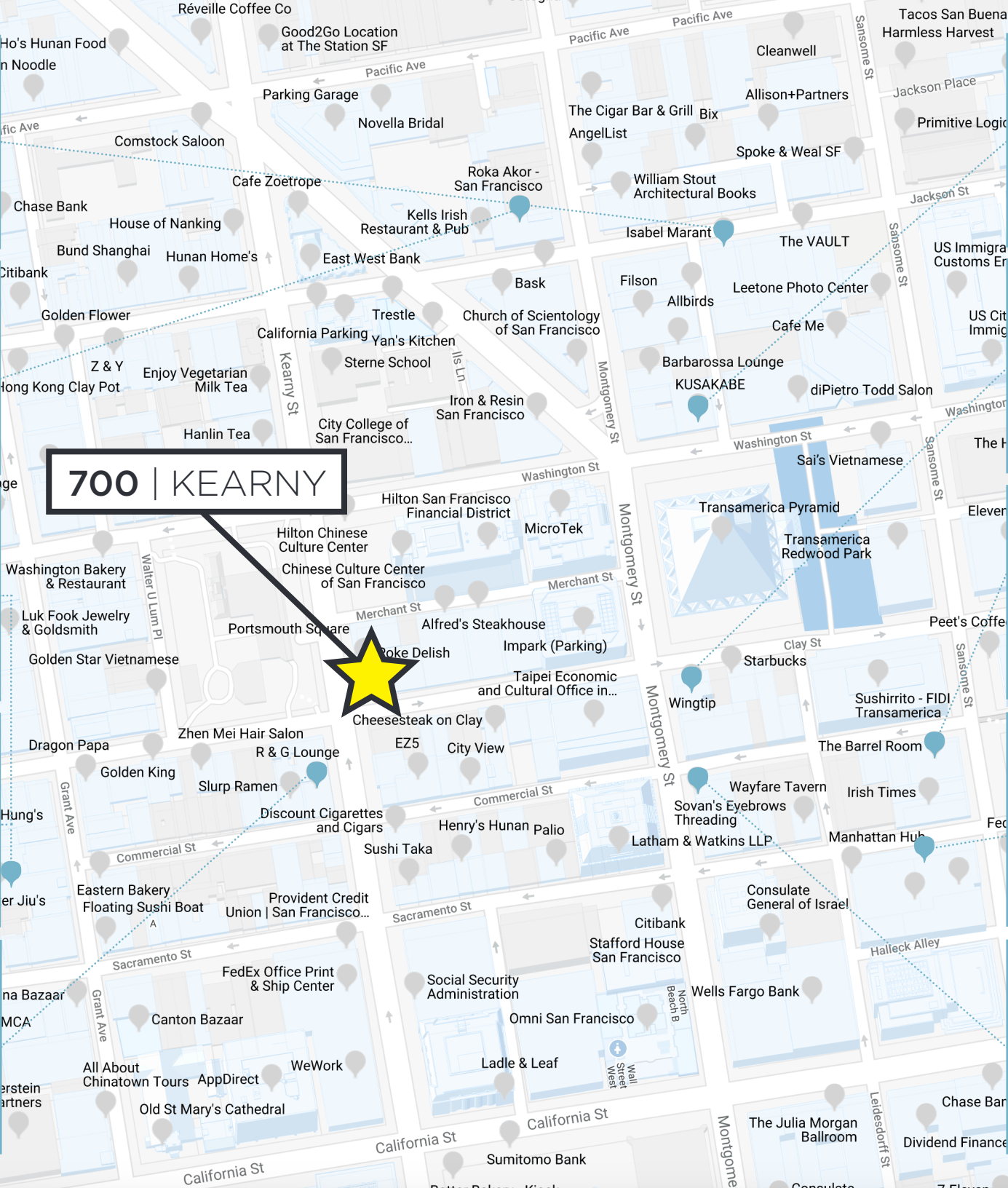
MISTER JIU'S



MOONGATE LOUNGE



SUM TEA HOUSE R&G LOUNGE



700 | KEARNY



KUSAKABE



WINGTIP



THE BARREL ROOM



ORANGETHEORY FITNESS



WAYFARE TAVERN

Weber Shandwick

Cheer BeeSen



NEIGHBORHOOD



700 | KEARNY

CORNER RETAIL/CAFE FOR LEASE

maven
RETAIL • OFFICE • INDUSTRIAL

SARAH BRETT SCHWARTZ
office 415.404.6959
sarah@mavenproperties.com
BRE #01903152

PAM MENDELSON
office 415.404.6650
pam@mavenproperties.com
BRE #00953050

ROSA LEE
office 415.404.7340
rosa@mavenproperties.com
BRE #02057293

NOTICE: This information has been secured from sources we believe to be reliable but we make no representations, warranties, express or implied, as to the accuracy of the information. Listing broker has been given enough information to provide only a preliminary interest in the property. The materials are not to be considered fact. The information contained herein is not a substitute for thorough due diligence investigation. References to square footage, zoning, use, or age are approximate. Please contact the San Francisco Planning Department to verify zoning at (415) 558-6378, as neither broker or landlord represent that this space is suitable for your use. Tenant or Buyer must verify the information at their own expense and bears all the risk for any inaccuracies. By receiving these materials you are agreeing to the disclaimers set forth herein. BRE#01878802

466 Green Street Suite #203 | San Francisco, CA 94133 | 415.781.7700