

**Delivering  
Q1 2023**



**300,000 SF AVAILABLE  
FOR BUILDING  
EXPANSION OR  
PARKING**

**BOX  
park**

**LOGISTICS CENTER**

CINNAMINSON, NJ

**995 Taylors Lane  
Cinnaminson, NJ 08077**



**30<sup>YEAR</sup> PILOT-PROGRAM**

**1.2M SF**



**IMMEDIATE ACCESS TO  
RIVERLINE COMMUTER  
RAIL**



**ABILITY TO CONNECT  
TO CSX RAIL LINE**

**Ability to deliver up to 1.5M SF**



**LOGISTICS<sup>®</sup>  
PROPERTY  
CO**

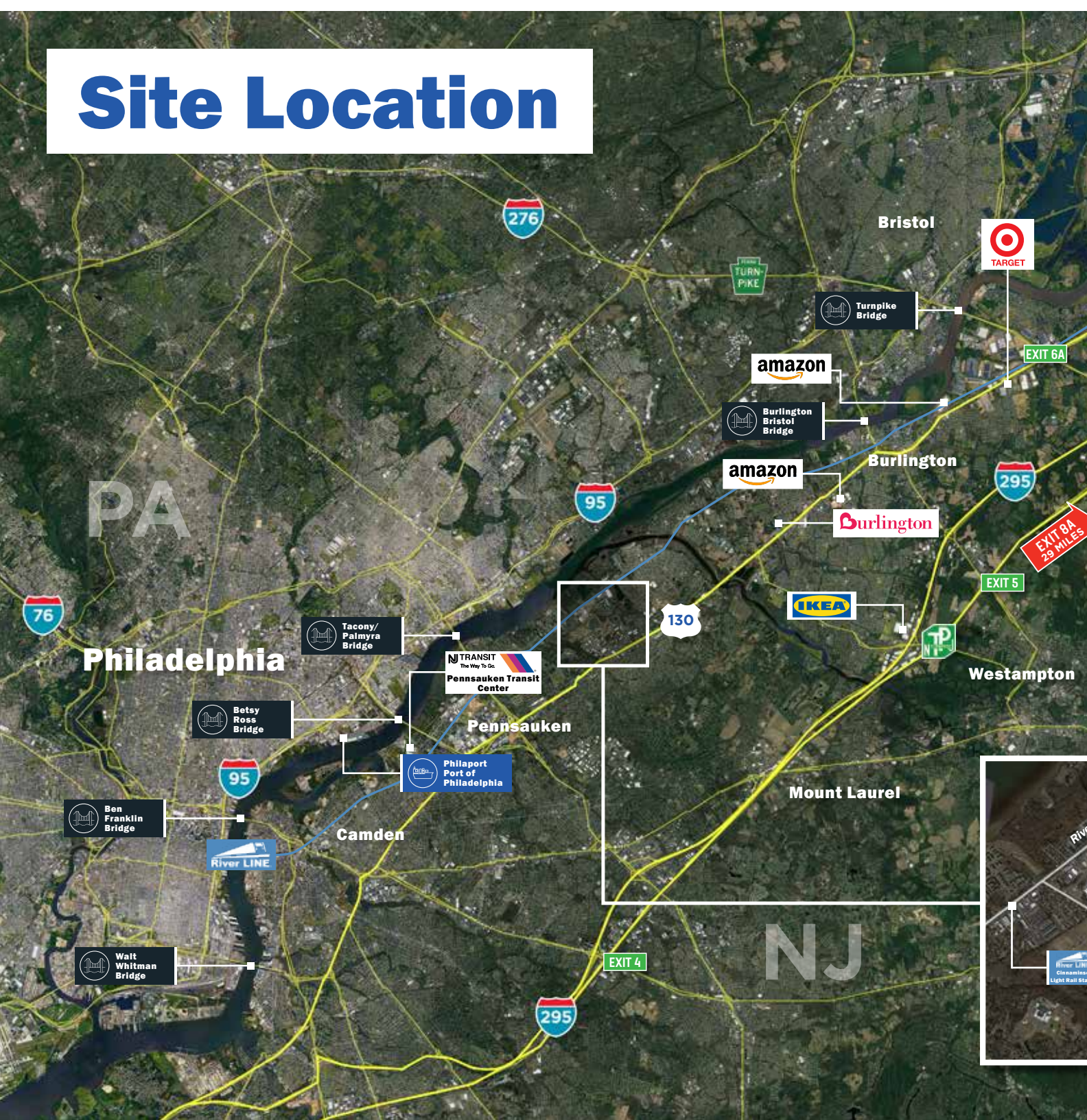


**CUSHMAN &  
WAKEFIELD**

# Site Location



CINNAMINSON, NJ



## DRIVE DISTANCES

### MAJOR CITIES

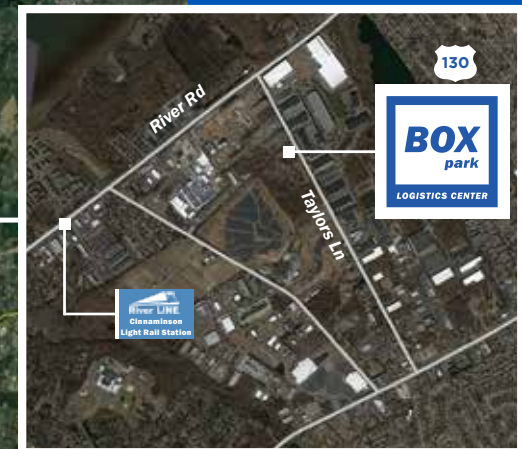
PHILADELPHIA	14 MILES
TRENTON	22 MILES
NEW YORK	81 MILES
WASHINGTON DC	154 MILES

### LOGISTICS HUBS

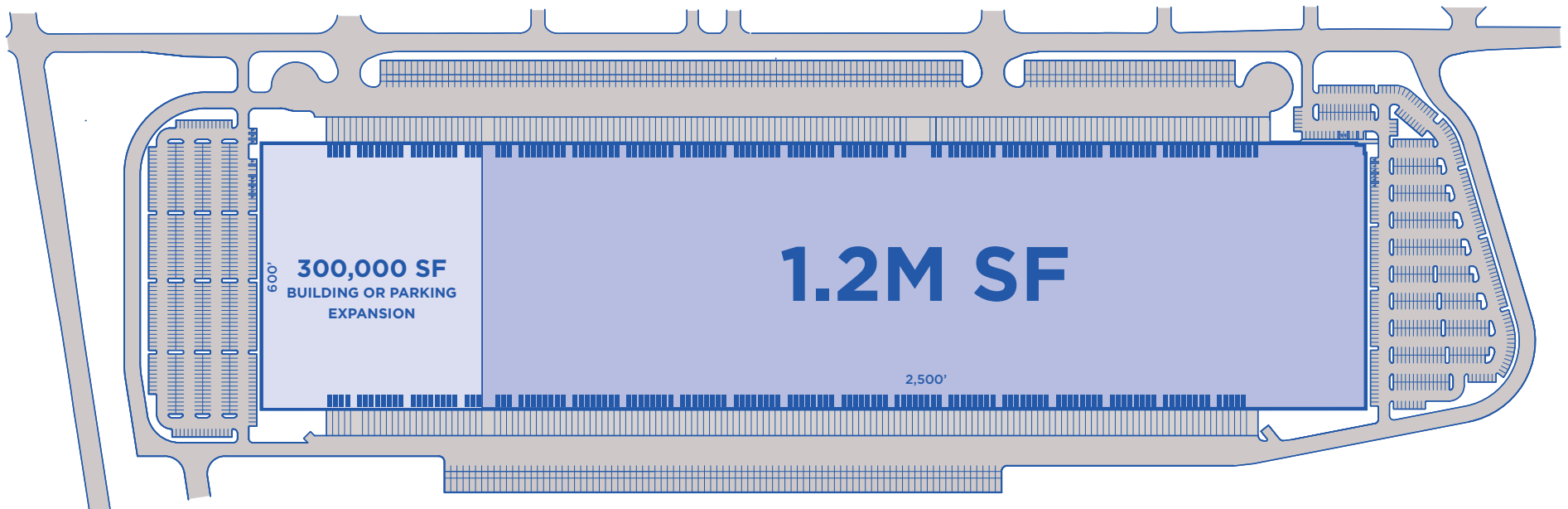
PHILAPORT	9 MILES
PHL INTERNATIONAL AIRPORT	16 MILES

### HIGHWAYS

NJ TURNPIKE - EXIT 4	8 MILES
I-295 - EXIT 43	8 MILES



# Site Plan



**Building Size** 1.2M SF (Expandable to 1.5M SF)

**Building Depth** 600'

**Clear Height** 40'

**Column Spacing** 54' x 52'

**Dock Doors** 215 (Expandable)

**Dock Levelers** To suit

**Drive In Doors** 2 (Expandable)

**Sprinkler** ESFR

**Car Parking Stalls** 1,074 (Expandable)

**Trailer Parking Stalls** 397 (Expandable)

**Power** 4000 amps 277/480 volts, 3 Phase service

**Lighting** LED to suit

**Concrete Slab** 8" 4000 psi concrete, ashford finish

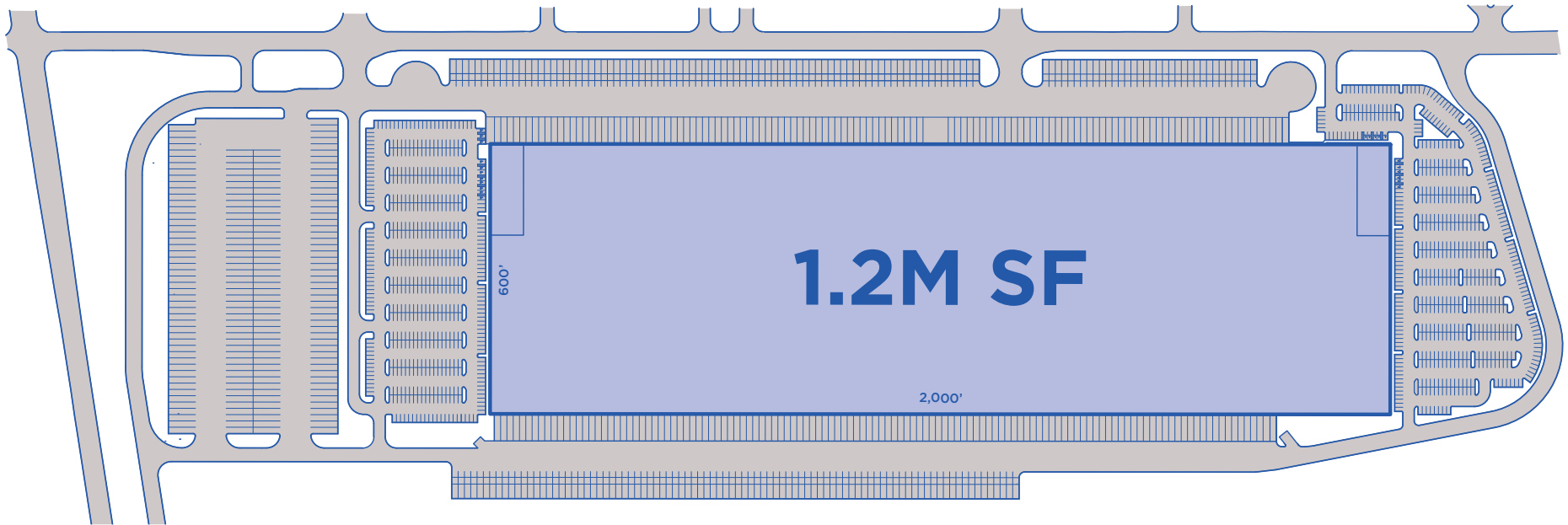
**Office SF** To suit

**Truck Court Depth** 188'

**Roof** R-30 45 mil white TPO

**HVAC** 8 roof mounted makeup air units, gas fired, 1,950 mbh with 10 hp motors

# Alternate Site Plan



**Building Size** 1.2M SF

**Building Depth** 600'

**Clear Height** 40'

**Column Spacing** 54' x 52'

**Dock Doors** 222

**Dock Levelers** To suit

**Drive In Doors** 2 (Expandable)

**Sprinkler** ESFR

**Car Parking Stalls** 1,092

**Trailer Parking Stalls** 407

**Power** 4000 amps 277/480 volts, 3 Phase service

**Lighting** LED to suit

**Concrete Slab** 8" 4000 psi concrete, ashford finish

**Office SF** To suit

**Truck Court Depth** 188'

**Roof** R-30 45 mil white TPO

**HVAC** 8 roof mounted makeup air units, gas fired, 1,950 mbh with 10 hp motors

**John Gartland**

Executive Director  
+ 1 856 324 8287  
john.gartland@cushwake.com

**Jonas Skovdal**

Senior Director  
+ 1 610 772 2005  
jonas.skovdal@cushwake.com

**Bill Waxman**

Vice Chair  
+ 1 201 394 9989  
bill.waxman@cushwake.com

**Mindy Lissner**

Vice Chair  
+ 1 732 243 3102  
mindy.lissner@cushwake.com

**Chris Butera**

Senior Associate  
+ 1 215 963 4011  
chris.butera@cushwake.com



**995 Taylors Lane  
Cinnaminson, NJ 08077**

