

RU-43 RESIDENTIAL LOTS

EXCLUSIVE LISTING | PHOENIX, ARIZONA

LOCATION Property is located at the southwest corner of 19th Ave & Irvine Rd in Desert Hills, AZ.

PRICE \$400,000

APNS 203-32-021, 203-32-022, 203-32-023, 203-32-024

ZONING RU-43

FLOODWAY Parcels are located within the Re-delineation of Skunk Creek at Anthem in Maricopa County, Arizona at cross section BQ.

[The full delineation report can be viewed here.](#)

UTILITIES

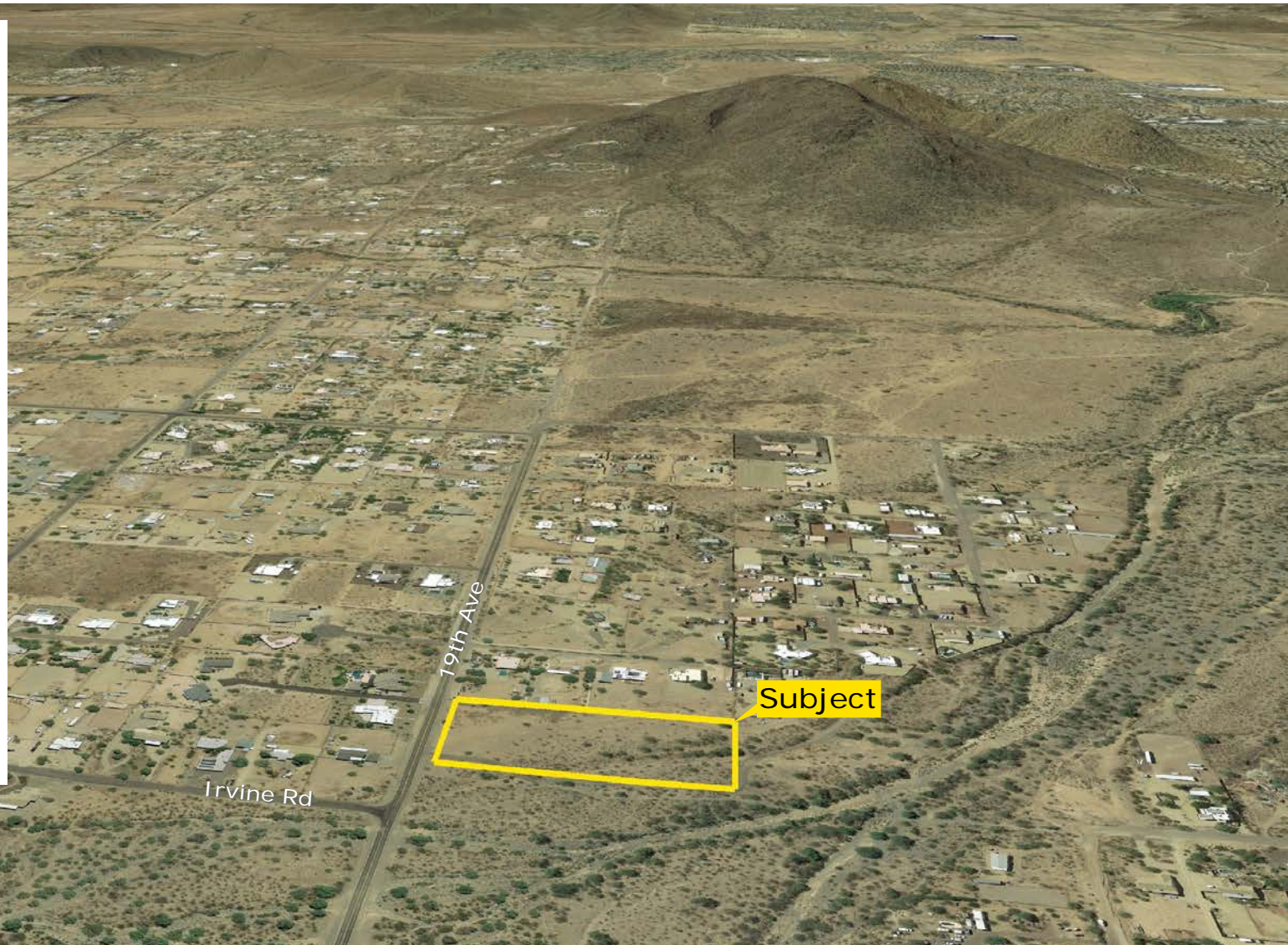
Electricity - APS

Water - There is currently no water service to the property

Sewer - Property will require onsite septic tanks to be installed.

COMMENTS

- Total of ±4.36 acres made up of four individual parcels being offered as a bulk sale.
- Individual parcels are oriented north/south and back to the Skunk Creek wash.
- Properties are located within FEMA designated floodplain/floodway, in the Skunk Creek study area.



Wes Campbell | wcampbell@landadvisors.com

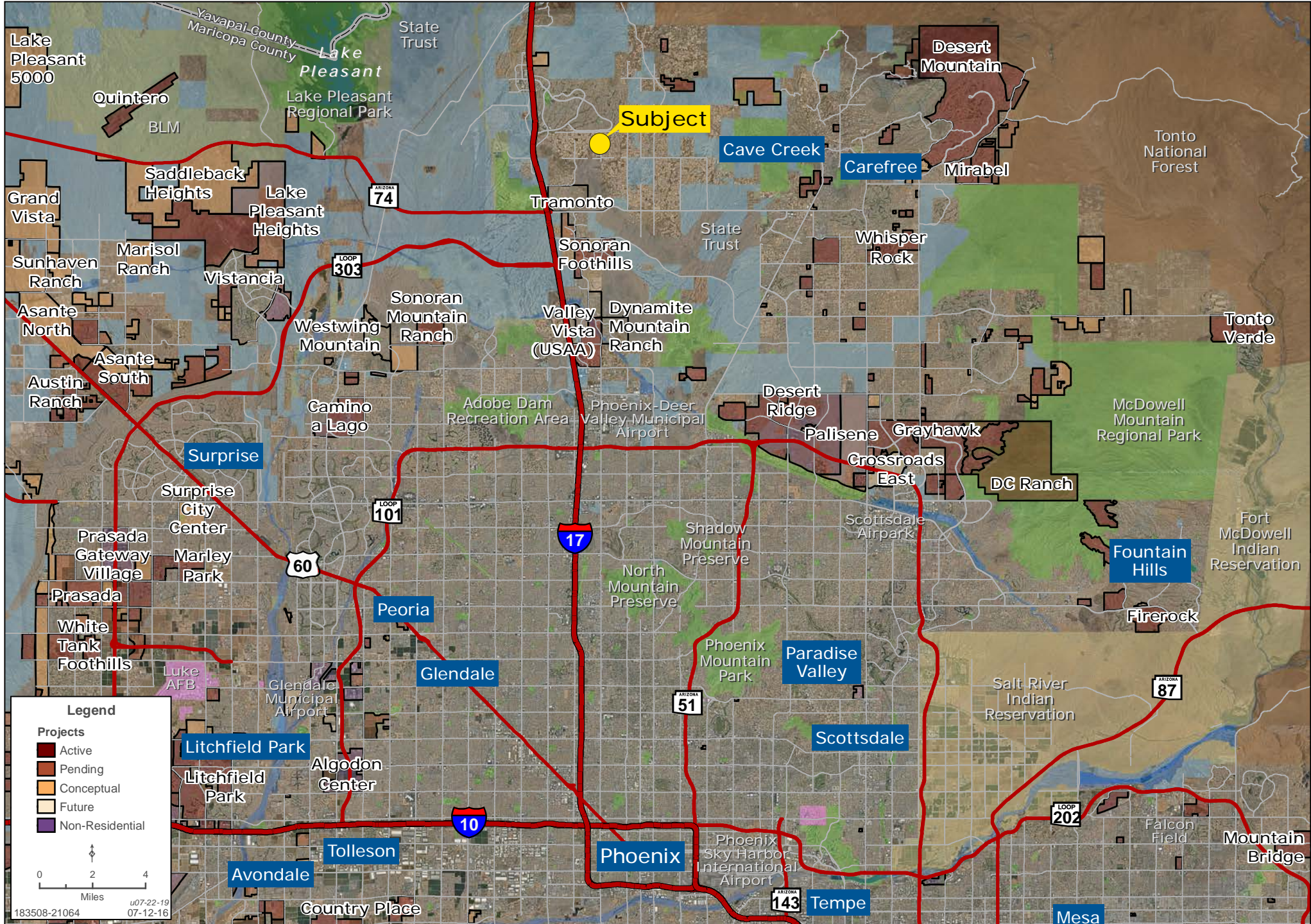
4900 North Scottsdale Road, Suite 3000, Scottsdale, Arizona 85251 | ph. 480.483.8100 | www.landadvisors.com

The information contained herein is from sources deemed reliable. We have no reason to doubt its accuracy but do not guarantee it. It is the responsibility of the person reviewing this information to independently verify it. This package is subject to change, prior sale or complete withdrawal. AZMaricopa183508 - 7.23.19



NW 19TH AVE & JOY RANCH RD REGIONAL MAP

Wes Campbell | Greg Vogel | 480.483.8100 | www.landadvisors.com



Legend

Projects

- Active
- Pending
- Conceptual
- Future
- Non-Residential

0 2 4
Miles

u07-22-19
07-12-16

183508-21064



NW 19TH AVE & JOY RANCH RD PROPERTY DETAIL MAP

Wes Campbell | Greg Vogel | 480.483.8100 | www.landadvisors.com

