

FOR SALE

± 25 Net Acres - Boulder Highway & St. Louis Avenue

Las Vegas, NV 89104



PROPERTY HIGHLIGHTS

±25 Acres, located on Boulder Hwy.

- APN's: 162-01-201-001 (a portion of) & 162-01-201-002
- Zoned: City of Las Vegas / C-2
- APN's: 162-01-201-003 & 004
- Zoned: Clark County / RVP (Recreation Vehicle Park)
- Planned Land Use: CG (Commercial General)

Remaining ±5 Acres is approved for gaming

Kevin Higgins, SIOR
Executive Vice President
Lic #B.0016109.CORP
702.734.4555
khiggins@voitco.com

6385 S. Rainbow Blvd., Suite 100, Las Vegas, NV 89118
702.734.4500 Fax | 702.733.7690 Fax | Lic #01333376 | www.voitco.com

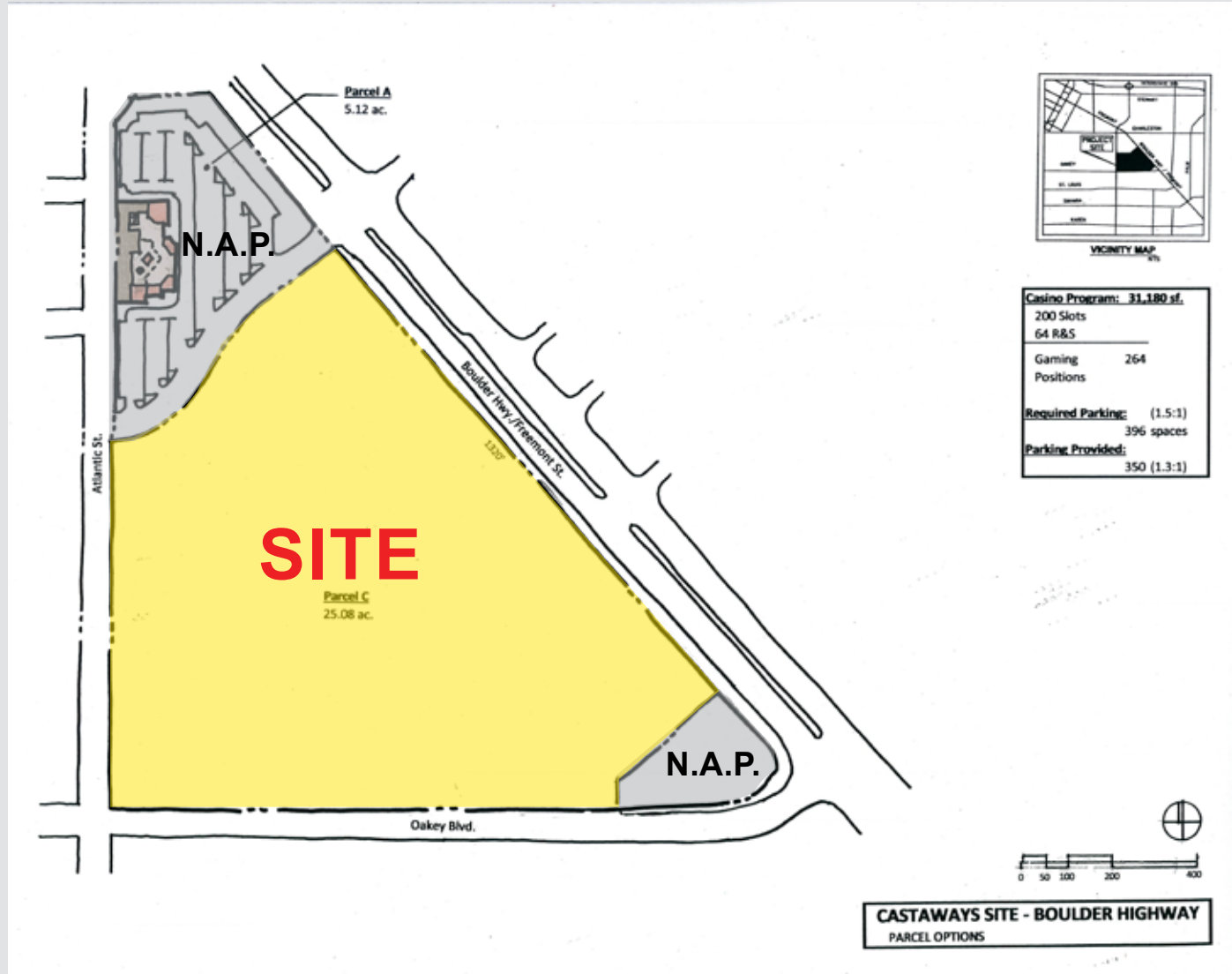
Voit

REAL ESTATE SERVICES

FOR SALE

± 25 Net Acres - Boulder Highway & St. Louis Avenue

Las Vegas, NV 89104



Kevin Higgins, SIOR
Executive Vice President
Lic #B.0016109.CORP
702.734.4555
khiggins@voitco.com

6385 S. Rainbow Blvd., Suite 100, Las Vegas, NV 89118
702.734.4500 Fax | 702.733.7690 Fax | Lic #01333376 | www.voitco.com

Voit
REAL ESTATE SERVICES