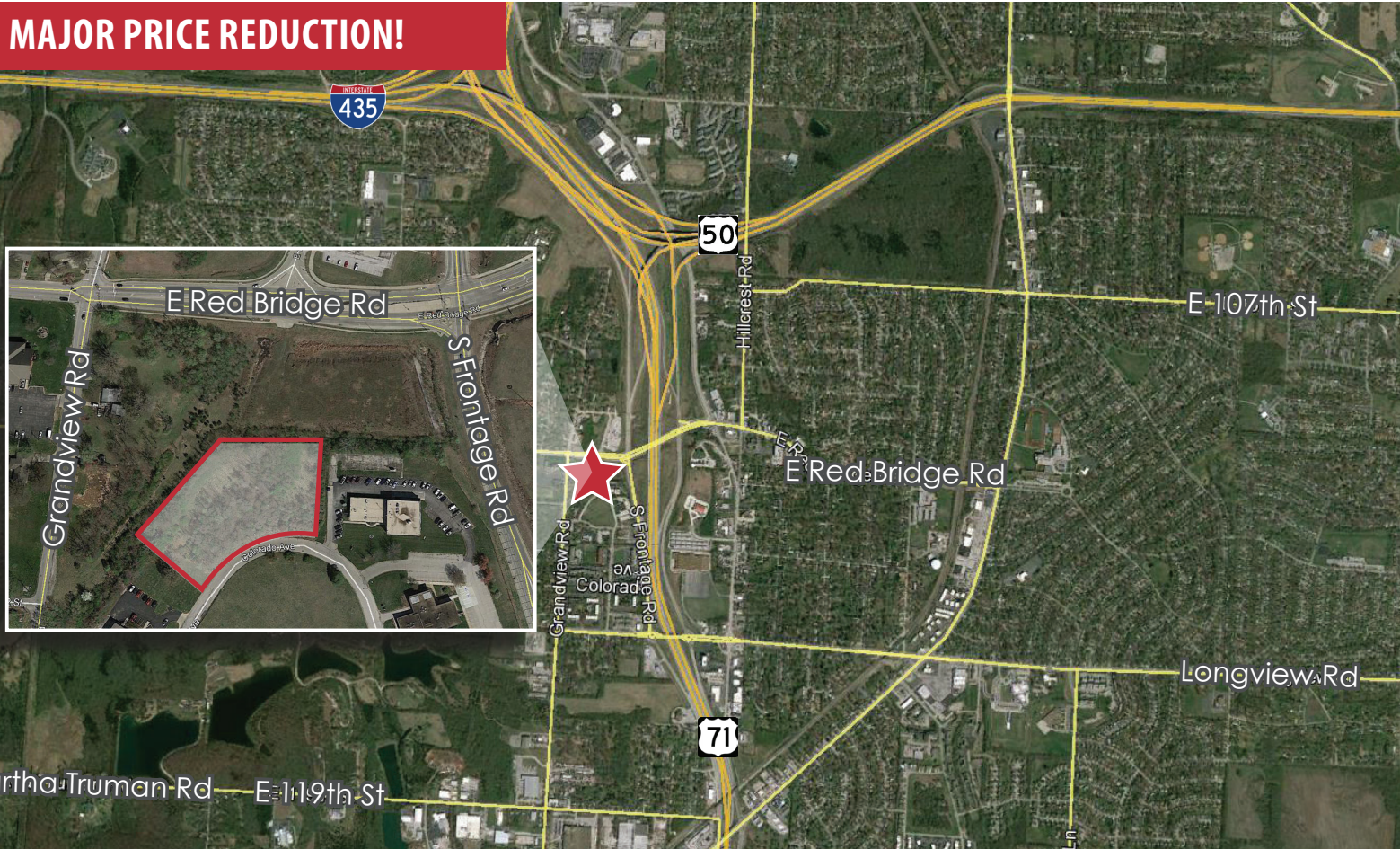


11200 QUINCY AVE

KANSAS CITY, MO 64137



MAJOR PRICE REDUCTION!



HIGHLIGHTS

- Priced to Sell @ **\$0.68/SF**
- 2+/- Acres with Easy Access to I-49
- Great Visibility to E Red Bridge Rd
- Located Between Cerner & Truman Market Place
- Zoned Neighborhood Business One

FOR SALE

\$59,000 (from \$159,000)

DEMOGRAPHICS

	1 Mile	3 Mile	5 Mile
2018 POPULATION	6,060	51,115	120,114
2018 AVG HOUSEHOLD INCOME	\$46,279	\$44,278	\$49,433

Ryan Schulteis

Office: 913-945-3741

Mobile: 785-766-6712

Email: ryans@reececommercial.com

The information above has been obtained from sources believed reliable. While we do not doubt its accuracy we have not verified it and make no guarantee, warranty or representation about it. It is your responsibility to independently confirm its accuracy and completeness. Any projections, opinions, assumptions, or estimates used are for example only and do not represent the current or future performance of the property. You and your advisors should conduct a careful, independent investigation of the property to determine to your satisfaction the suitability of the property for your needs.

© 2018