

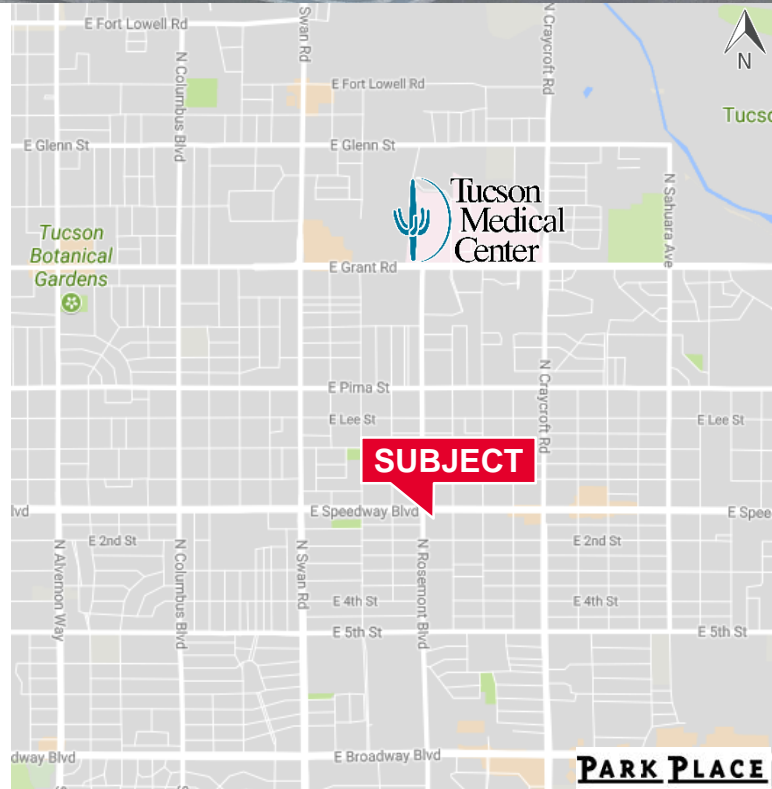


**RETAIL**

**Suite 5110 - 880 SF Space  
Lease Rate: \$9.55/SF Modified Gross**

**Property Highlights**

- HVAC serviced suite
- Bathroom in-suite
- Two reserved parking spaces in front of the suite and behind for tenant's use
- Monument Signage available



| <b>Demographics<br/>2017 Estimates</b> | <b>1-Mile<br/>Radius</b> | <b>3-Mile<br/>Radius</b> | <b>5-Mile<br/>Radius</b> |
|--|--------------------------|--------------------------|--------------------------|
| Population Density                     | 15,634                   | 117,079                  | 270,350                  |
| Households                             | 7,810                    | 55,620                   | 123,629                  |
| Avg. Household Income                  | \$54,661                 | \$60,382                 | \$64,038                 |
| Total Retail Expenditure               | \$174 M                  | \$1.31 B                 | \$3.03 B                 |

**Ryan McGregor**  
Commercial Properties  
+1 520 546 2748  
rmcgregor@picor.com

**PICOR Commercial Real Estate Services**  
5151 E. Broadway Blvd, Suite 115  
Tucson, Arizona 85711  
phone: +1 520 748 7100  
picor.com

*Independently Owned and Operated / A Member of the Cushman & Wakefield Alliance*  
Cushman & Wakefield Copyright 2016. No warranty or representation, express or implied, is made to the accuracy or completeness of the information contained herein, and same is submitted subject to errors, omissions, change of price, rental or other conditions, withdrawal without notice, and to any special listing conditions imposed by the property owner(s). As applicable, we make no representation as to the condition of the property (or properties) in question.

Aerial

RETAIL



For more information, please contact:

**Ryan McGregor**  
Commercial Properties  
+1 520 546 2748  
rmcgregor@picor.com

**PICOR Commercial Real Estate Services**  
5151 E. Broadway Blvd, Suite 115  
Tucson, Arizona 85711  
phone: +1 520 748 7100  
picor.com

