

12C LEDGEBROOK DR., MANSFIELD, CT

Two Office Spaces For Lease



- Unit 4: 250 SF @\$450/Month
Unit 5: 310 SF @\$550/Month
Units 4&5: 560 SF @ \$950/Month
Gross + Utilities
- ◆ Upper Level
 - ◆ Off Route 6
 - ◆ Near Storrs Rd, (Route 195)
 - ◆ Across from East Brook Mall

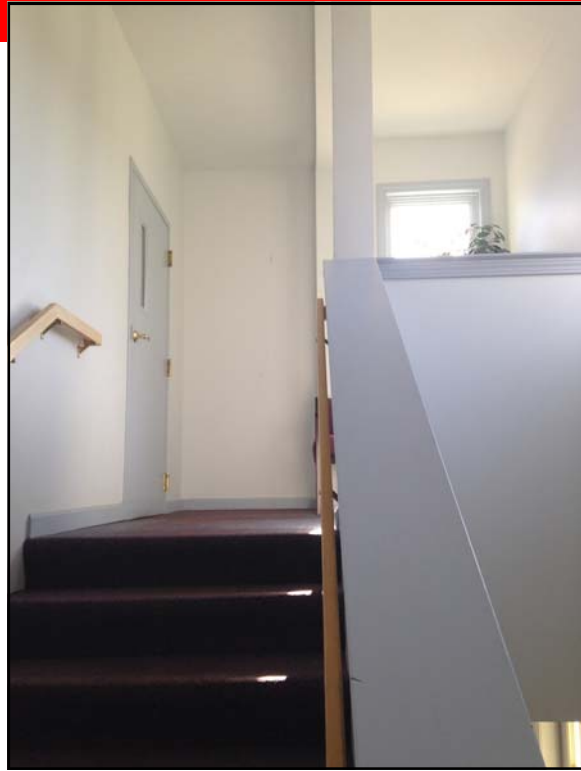


LYMAN

REAL ESTATE BROKERAGE & DEVELOPMENT
www.LymanRE.com

RON LYMAN

Main Office:
1160 Boston Post Rd.
Westbrook, CT 06498
Mailing Address:
73 Second Ave.
Westbrook, CT 06498
860-887-5000 x1 Office
860-884-4666 Cell
ronl@lymanre.com



All information stated is from sources deemed reliable and is submitted subject to errors, omission, changes of other terms and conditions, prior sales, financing or withdrawal without notice. Buyer/Tenant agents will be eligible for a portion of commission only if they have an existing signed representation.

FLOOR PLAN

