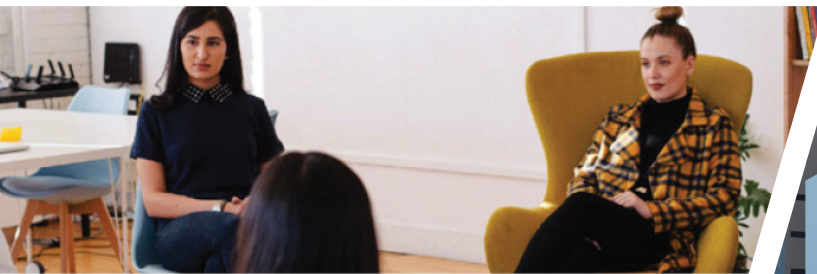


THE LOFT at MIDTOWN



JANUARY 2021
DELIVERY



Bromley Companies

CUSHMAN & WAKEFIELD

MIDTOWN TAMPA

On 22 acres, Midtown Tampa is the **first mixed-use project of its kind** in Tampa and the catalyst for an entirely new district connecting Westshore and Downtown. It will deliver **1.8 million square feet** of retail, residential, office, entertainment and hospitality to the surrounding neighborhood and entire city, focusing on highly evolved pedestrian and public spaces.

Office:
822,000 SF

Retail:
220,000 SF

Multifamily:
390 Units

Boutique Hotel:
235 Keys

WORK IN THE MIDDLE



OFFICE

MIDTOWN THREE
±400,000 RSF
Est. Delivery: Q1 2022

OFFICE

THE LOFT AT MIDTOWN
49,327 SF of Office
COMING JANUARY 2021

OFFICE

MIDTOWN TWO
±200,000 RSF
Est. Delivery: Q3/4 2021

GROUND FLOOR RETAIL

Est. Delivery: Q1 2021

HOTEL

ALOFT &
ELEMENT HOTELS
Est. Delivery: Q1 2021

PARKING STRUCTURE

Est. Delivery: Q1 2021

RESIDENTIAL

NOVEL BY CRESCENT
COMMUNITIES
Est. Delivery: Q1 2021

DOG PARK

3-ACRE
MIDTOWN LAKE

WATERCOURSE

OFFICE

MIDTOWN WEST
±152,000 RSF
Est. Delivery: DEC 2020

GROCER

WHOLE FOODS MARKET
Est. Delivery: Q1 2021

AMENITIES MATTER

Discover the Midtown difference:

- Active lifestyle environment with Midtown Lake, walking trail, and dog park
- Over 8 restaurant and bar options
- Boutique fitness
- Retail and shopping
- Hotel with conference space and rooftop bar lounge
- WiFi throughout the park
- Drop-off area and valet
- Free, ample covered parking



Notable Tenants at The Loft include, Royal Pets and The Hall at Midtown.





**JANUARY 2021
DELIVERY**

- 49,327 SF of office
- 23,060 SF of retail on first floor
- The Hall at Midtown
- Royal Pets
- 15 foot ceilings
- Two indoor/outdoor balconies
- Skylights
- Signage Available
- Valet drop off and ample covered parking
- Views of Midtown Commons Plaza



OFFICE 24,019 SF

OFFICE 25,308 SF

RETAIL 23,060 SF



THE LOFT

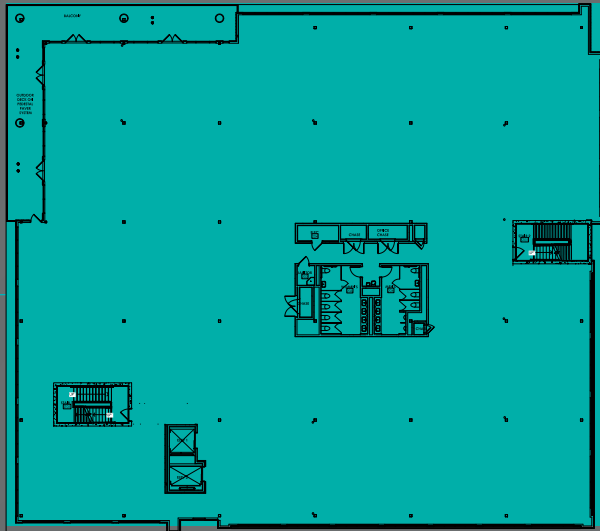
at MIDTOWN

**72,387 RSF 3-STORY BUILDING
JANUARY 2021 DELIVERY**

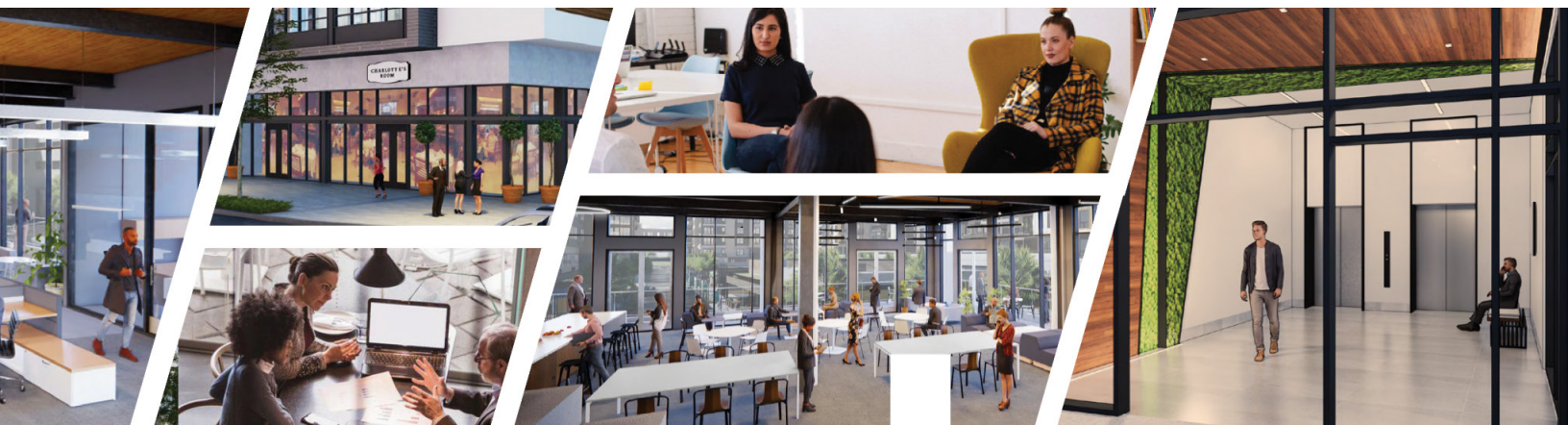
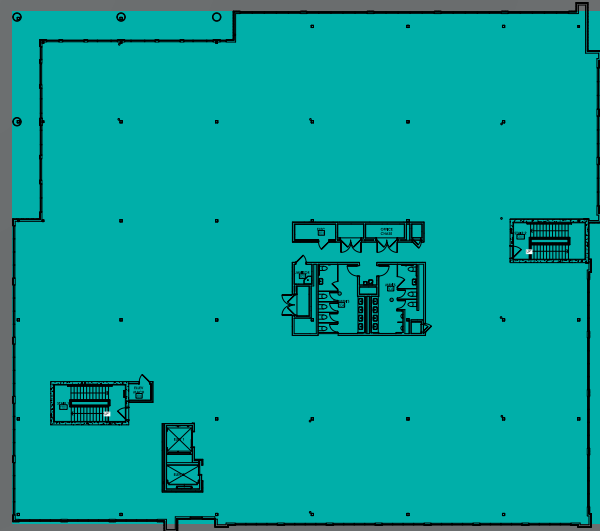
The Loft at Midtown Tampa, an exclusive business proposition with unlimited opportunities for growth. The Loft provides a unique free standing opportunity featuring stand-out second and third floor office space sitting above a dynamic retail environment.



**2ND FLOOR
25,308 SF**



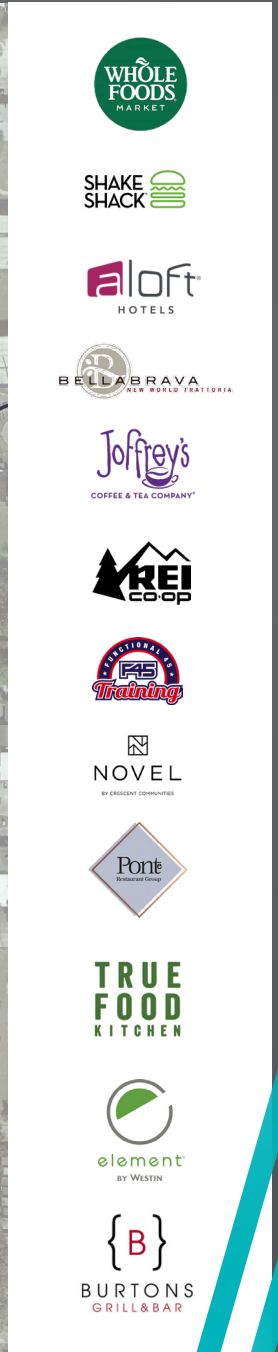
**3RD FLOOR
24,019 SF**

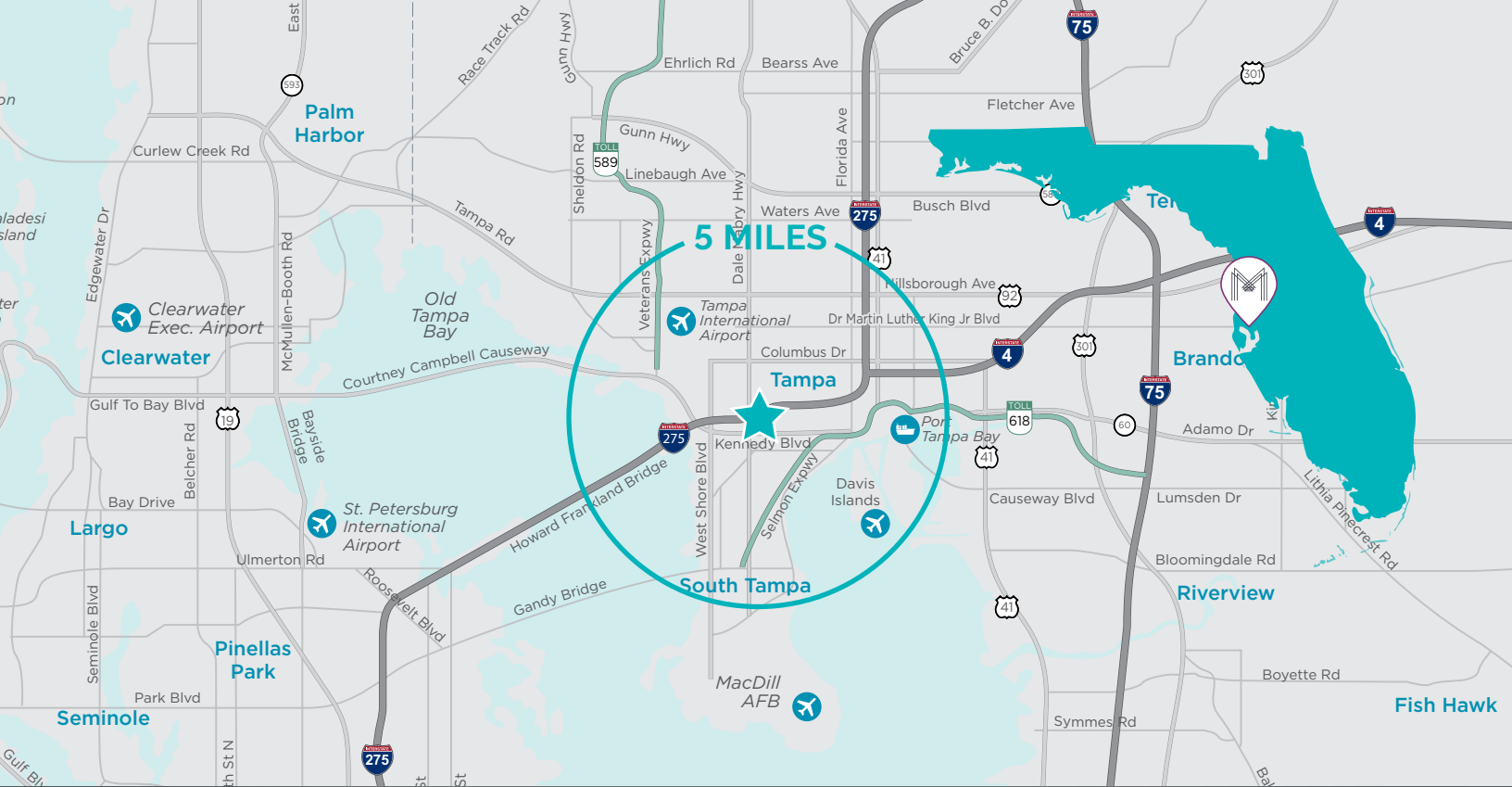


EXPERIENCE

THE
LOFT
at MIDTOWN







WORK IN THE MIDDLE

Midtown Tampa is strategically located on the southeast corner of Dale Mabry and I-275, bordered by Himes Avenue and Cypress Street. This is not just one of the most well known and heavily traveled intersections in the Tampa market, but also the premier position for strong brand visibility from over 300,000 cars per day. This prime location is easily accessible from anywhere in Tampa, St. Petersburg and Clearwater.

5 MILE RADIUS FROM MIDTOWN TAMPA

WESTSHORE

- 97,000 Employees
- 39 Hotels – 7,663 Rooms
- 250 Restaurants
- 12.75 Million SF of Commercial Office Space
- 15,000 Residents and Growing

DOWNTOWN TAMPA

- 66,580 Employees
- 16 Hotels – 3,624 Rooms
- 180 Restaurants
- 6.2 Million SF of Commercial Office Space
- 8,152 Residents and Growing

FOR OFFICE LEASING CONTACT

ROBIN BISHOP

+ 1 813 250 1820

robin.bishop@cushwake.com

NINA SULLIVAN

+ 1 813 204 5352

nina.sullivan@cushwake.com



MIDTOWN
TAMPA

Bromley Companies

