

SEC CITRUS ROAD & VAN BUREN STREET

EXCLUSIVE LISTING | ±133 ACRES | GOODYEAR, ARIZONA



Bret Rinehart | brinehart@landadvisors.com **Ryan Semro** | rsemro@landadvisors.com **Ben Heglie** | bheglie@landadvisors.com
4900 North Scottsdale Road, Suite 3000, Scottsdale, Arizona 85251 ph. 480.483.8100 | www.landadvisors.com

The information contained herein is from sources deemed reliable. We have no reason to doubt its accuracy but do not guarantee it. It is the responsibility of the person reviewing this information to independently verify it. This package is subject to change, prior sale or complete withdrawal. AZMaricopaGoodyear134413-1.5.18



PROPERTY OVERVIEW

LOCATION Property is located at the SEC of Citrus Road and Van Buren Street in Goodyear, Arizona.

PRICE Submit

SIZE ±133 acres

ZONING PAD (Approved in 2008)

Click here to view [Rose Gardens PAD](#)

Click here to view [Rose Gardens PAD Exhibits](#)

Click here to view [Rose Gardens PAD Approval Letter](#)

PARCELS 502-37-010D, 502-39-012C, 502-39-012D, 502-39-012E, 502-39-012F, 502-39-013, 502-39-961

SCHOOLS

Avondale Elementary School District

Agua Fria Union High School District

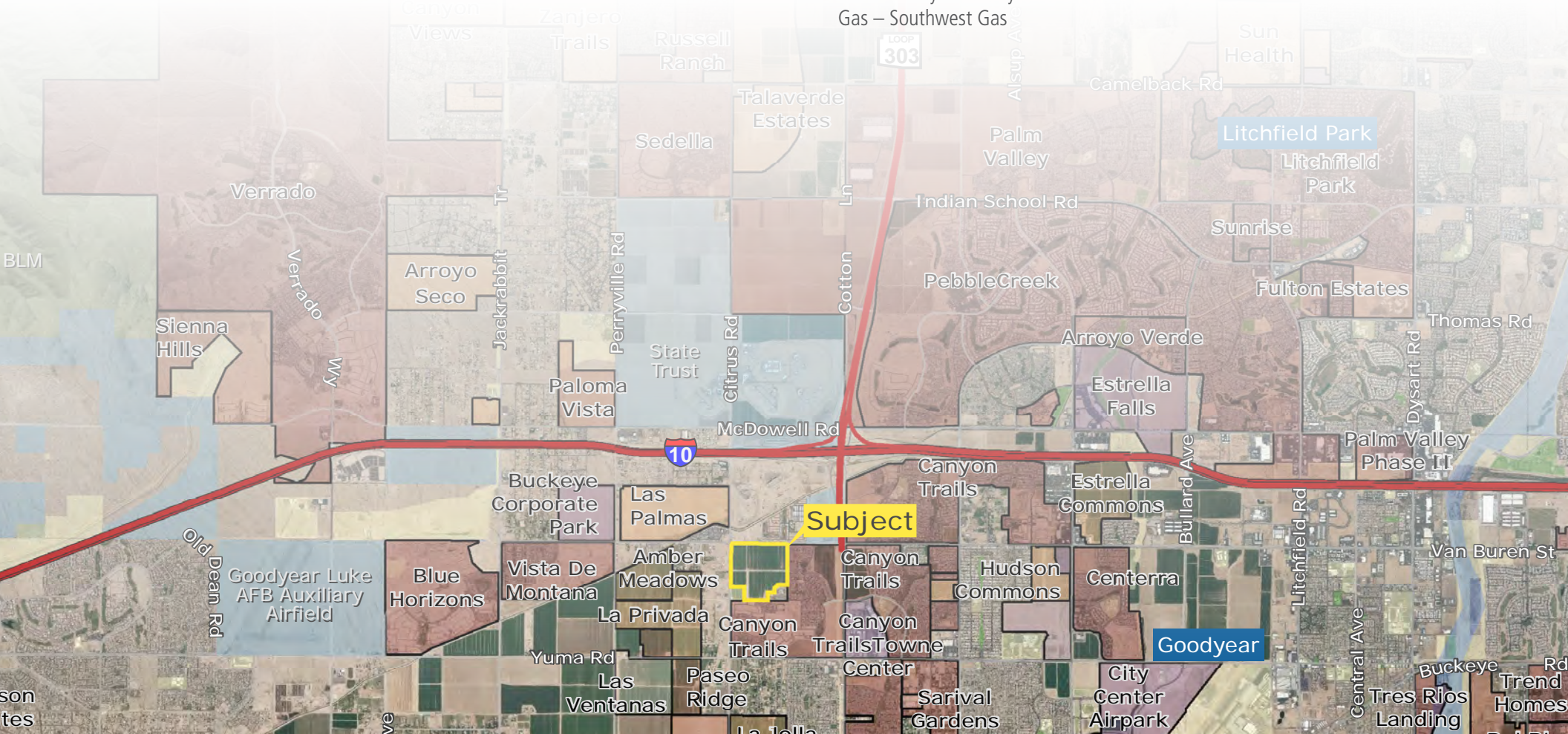
UTILITIES

Power – Arizona Public Service (APS)

Water – City of Goodyear

Sewer – City of Goodyear

Gas – Southwest Gas



COMMUNITY ATTRIBUTES

GOODYEAR, ARIZONA

A young city with a “go-getter” attitude, Goodyear always strives to be on the leading edge.

Goodyear has been proactive in its pursuit of industry and amenities.

A 4,000-acre employment corridor surrounding the Phoenix-Goodyear Airport, plus the new Spring Training ballpark complex, the metro area’s next regional mall, a planned downtown, new industries, and key transportation corridors are coloring the landscape of this vital young city.

Residents and businesses of all types call this progressive city home because of its:

- Outstanding quality of life
- Strategic location on the I-10 commercial corridor
- Variety of housing in master planned communities
- Access to the largest labor pool in Arizona
- Excellent school districts
- Available land and business parks

GOODYEAR, ARIZONA: MAJOR EMPLOYERS

Lockheed Martin Aerospace, Engineering, 500-1000

McLane Sunwest, Distribution, 500-1000

West Valley Hospital, Health Services, 500-1000

Amazon.com, Internet Fulfillment, 250-500

Cancer Treatment Centers of America, Health Services, 250-500

Cavco Industries, Manufacturing, 250-500

Macy’s Logistics and Operations, Internet Fulfillment, 250-500

Sub-Zero/Wolf, Appliance Manufacturing, 250-500

AeroTurbine, Aircraft Maintenance, 100-250

Kysor Panel Systems, Manufacturing, 100-250

Lufthansa Airline Training Center, Education, Flight Training, 100-250

Poore Brothers, Food Manufacturing, 100-250

Rudolfo Bros. Plastering Inc., Construction, 100-250

Snyders of Hanover Food Manufacturing 100-250

Arizona Galvanizing Inc., Galvanizing, 50-100

Global Organics LLC, Manufacturing, 50-100

Lorts Manufacturing, Furniture Manufacturing, 50-100

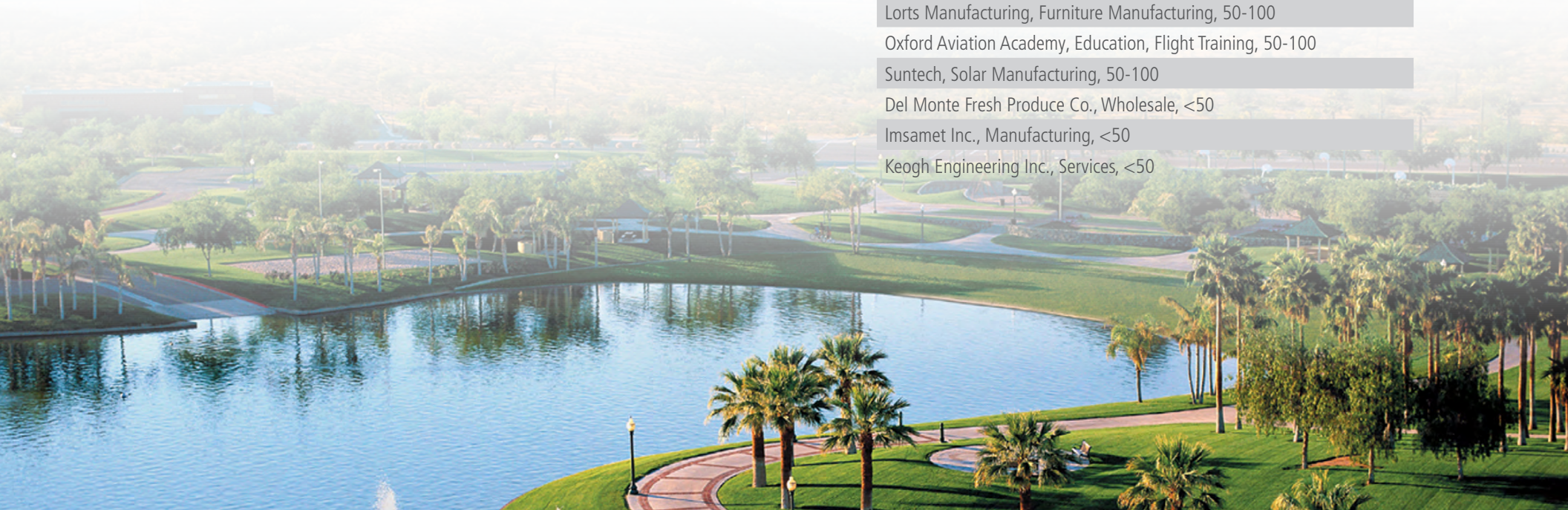
Oxford Aviation Academy, Education, Flight Training, 50-100

Suntech, Solar Manufacturing, 50-100

Del Monte Fresh Produce Co., Wholesale, <50

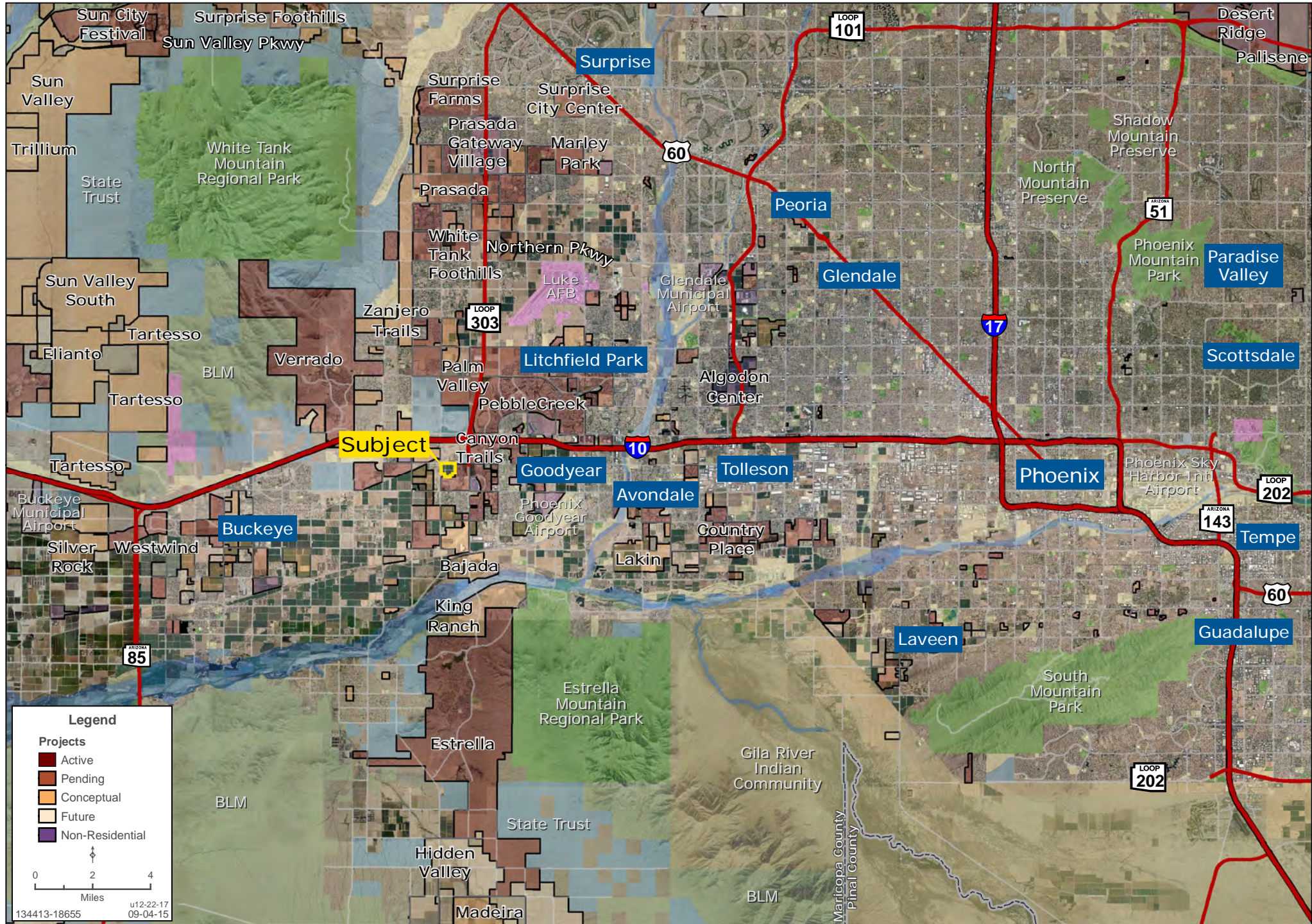
Imsamet Inc., Manufacturing, <50

Keogh Engineering Inc., Services, <50



REGIONAL MAP

Brad Wilde | Ryan Semro | 480.483.8100 | www.landadvisors.com



Legend

Projects

- Active
- Pending
- Conceptual
- Future
- Non-Residential

0 2 4
Miles

u12-22-17
09-04-15

134413-18655

SURROUNDING DEVELOPMENT MAP

Brad Wilde | Ryan Semro | 480.483.8100 | www.landadvisors.com



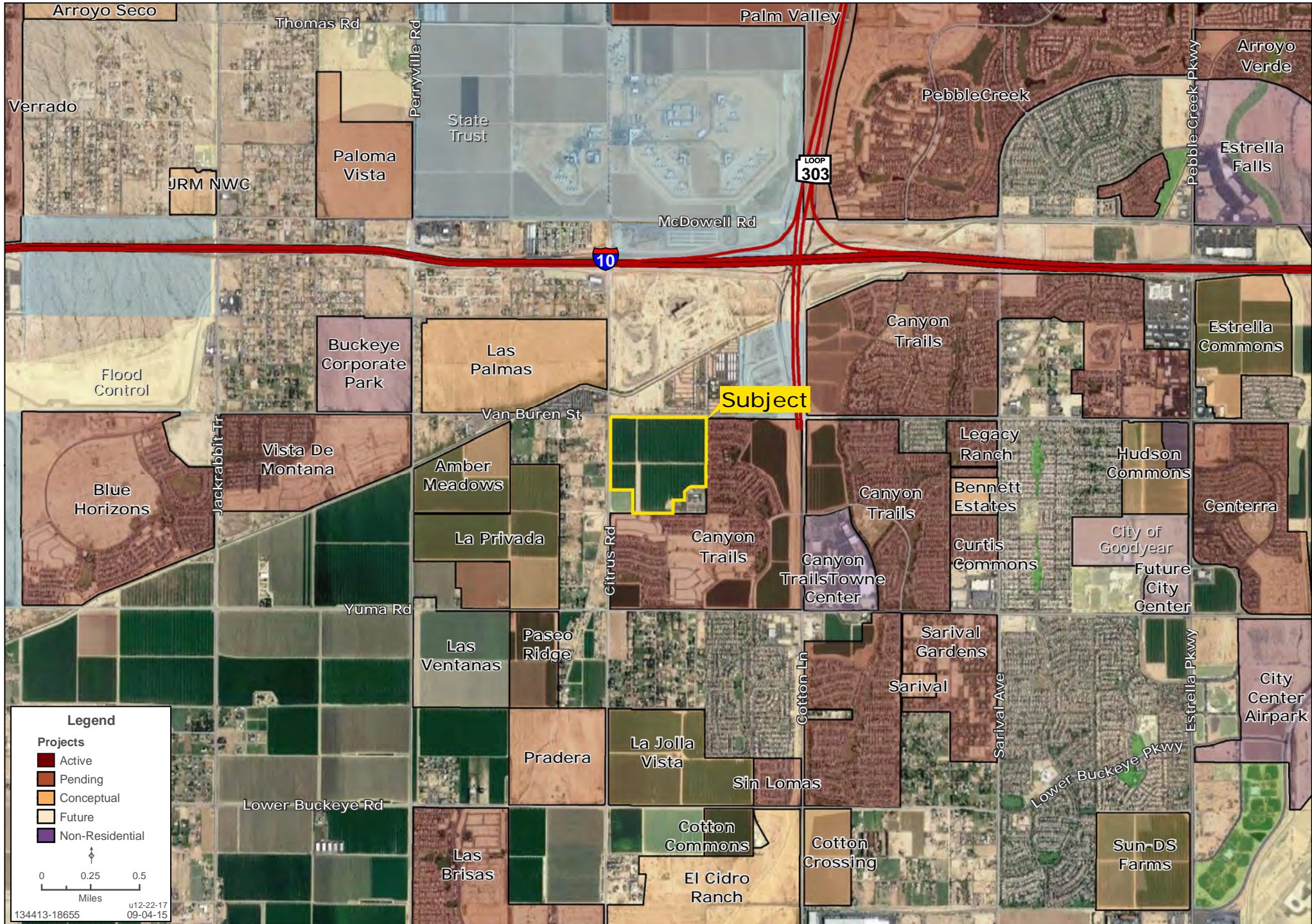
BALLPARK VILLAGE COMMERCIAL MAP

Brad Wilde | Ryan Semro | 480.483.8100 | www.landadvisors.com



SURROUNDING AREA MAP

Brad Wilde | Ryan Semro | 480.483.8100 | www.landadvisors.com



Legend

Projects

- Active
- Pending
- Conceptual
- Future
- Non-Residential

0 0.25 0.5
Miles

u12-22-17
09-04-15

134413-18655

PROPERTY DETAIL MAP

Brad Wilde | Ryan Semro | 480.483.8100 | www.landadvisors.com



