



# ELK GROVE WOODS PLAZA

1 - 51 S ARLINGTON HEIGHTS ROAD, ELK GROVE VILLAGE, IL 60007

**HUGE**  
DAYTIME  
POPULATION



**FOR LEASE | RETAIL**

- LESS THAN HALF MILE FROM NEW 85 ACRE, 1.2 MILLION SF ELK GROVE TECHNOLOGY PARK
- SECOND HIGHEST EMPLOYMENT CONCENTRATION IN IL
- EXCELLENT ACCESS FROM ARLINGTON HEIGHTS AND HIGGINS RD.

**SPACE AVAILABLE | 3,000 - 10,500 SF**  
**ANNUAL NET RENT | \$18 - 23 / SF**  
**CAM & TAX | \$10.23 / SF**  
**DAYTIME POPULATION | 159,601 WITHIN 3 MILES**  
**POPULATION | 83,509 WITHIN 3 MILES**  
**AVERAGE HH INCOME | \$81,143 WITHIN 3 MILES**  
**TRAFFIC | 59,100 VEHICLES PER DAY**

TENANTS & SURROUNDINGS



CONTACT

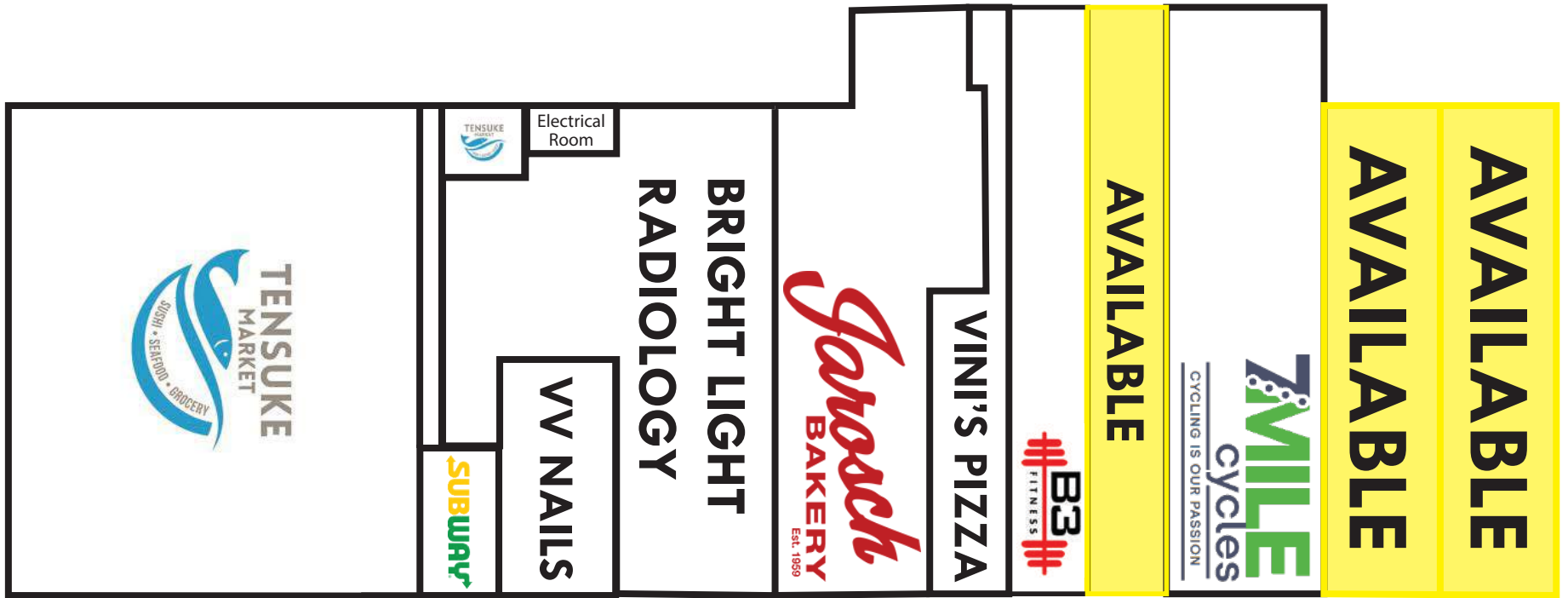
**SCOTT LEVINSON**  
 312-337-1001 xt. 2022  
 slevinson@matanky.com

**ARNIE BLAKE**  
 312-337-1001 xt. 2030  
 ablake@matanky.com

# ELK GROVE WOODS PLAZA

1 - 51 S ARLINGTON HEIGHTS ROAD, ELK GROVE VILLAGE, IL 60007

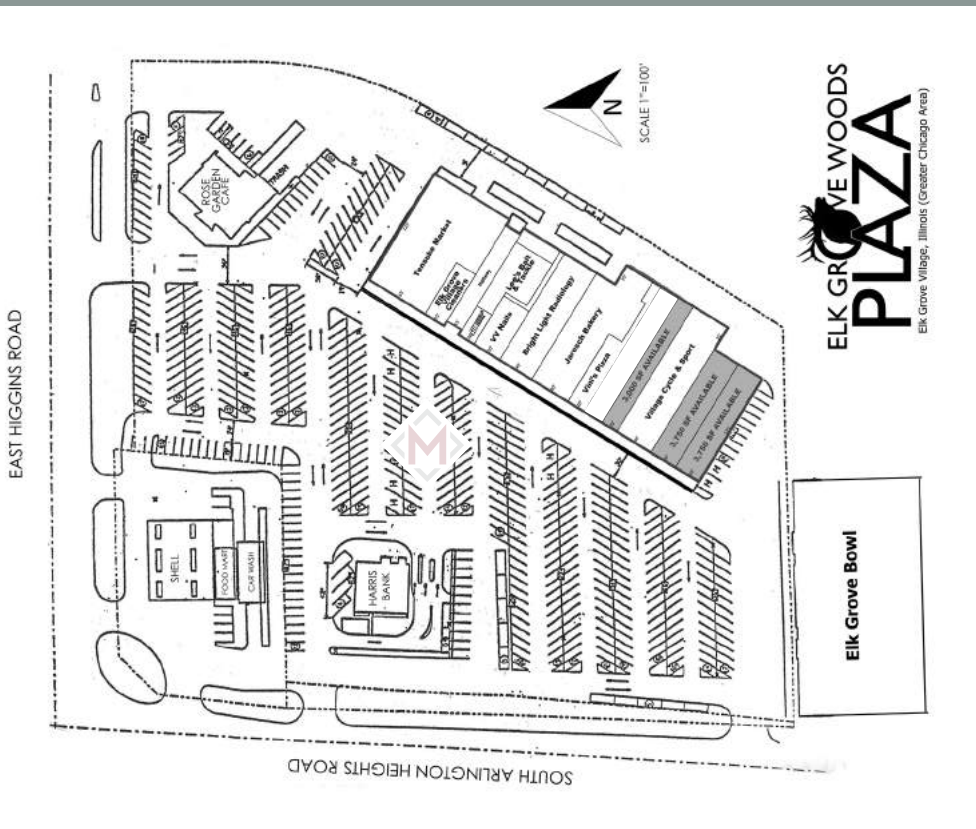
## SITE PLAN



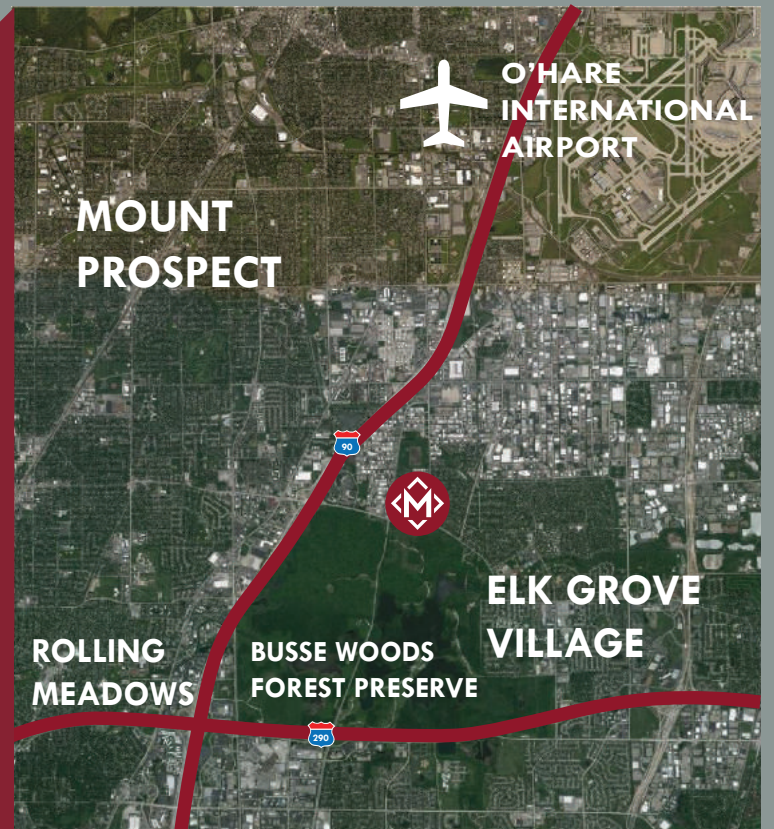
SHOPPING CENTER IS CURRENTLY UNDERGOING RENOVATIONS. CALL FOR ADDITIONAL SITE PLANS

UNIT	SF	TENANT	UNIT	SF	TENANT	UNIT	SF	TENANT
3	13,734	Tensuke Market	35	6,485	Jarosch Bakery	45	6,000	7 Mile Cycle
25	920	Subway	39	2,000	Vini's Pizza	49	3,750	AVAILABLE
29	1,847	VV Nails	41	3,000	B3 Fitness	51	3,750	AVAILABLE
31	6,910	Bright Light Radiology	43	3,000	AVAILABLE			

## SITE MAP



## AERIAL MAP



**312-337-1001**



**SCOTT LEVINSON | ARNIE BLAKE**

JOIN US ON:



WWW.MATANKY.COM