

Kelly Plaza

2204 KELLY BLVD, CARROLLTON, TX 75006

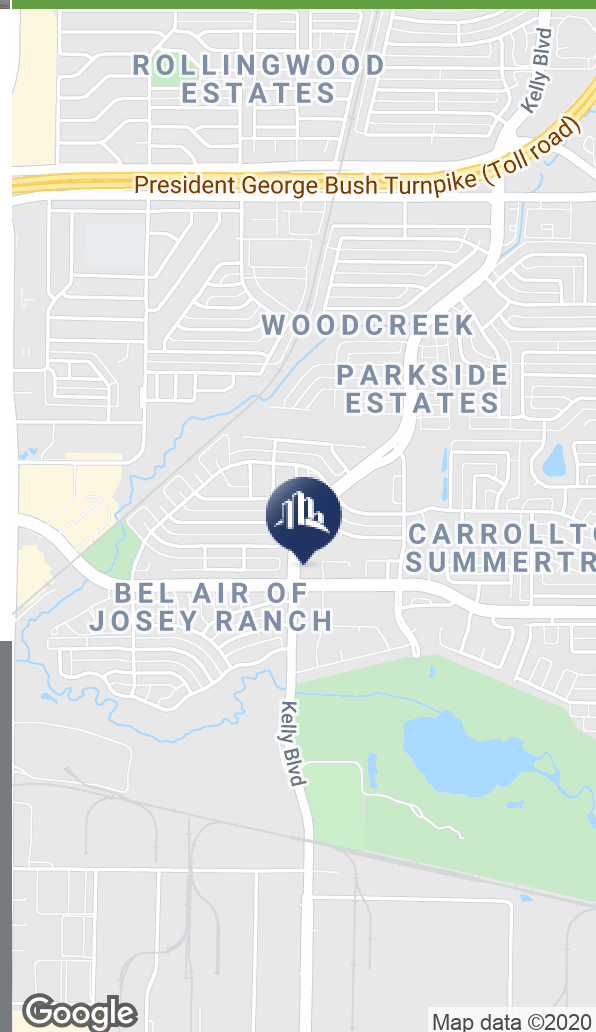
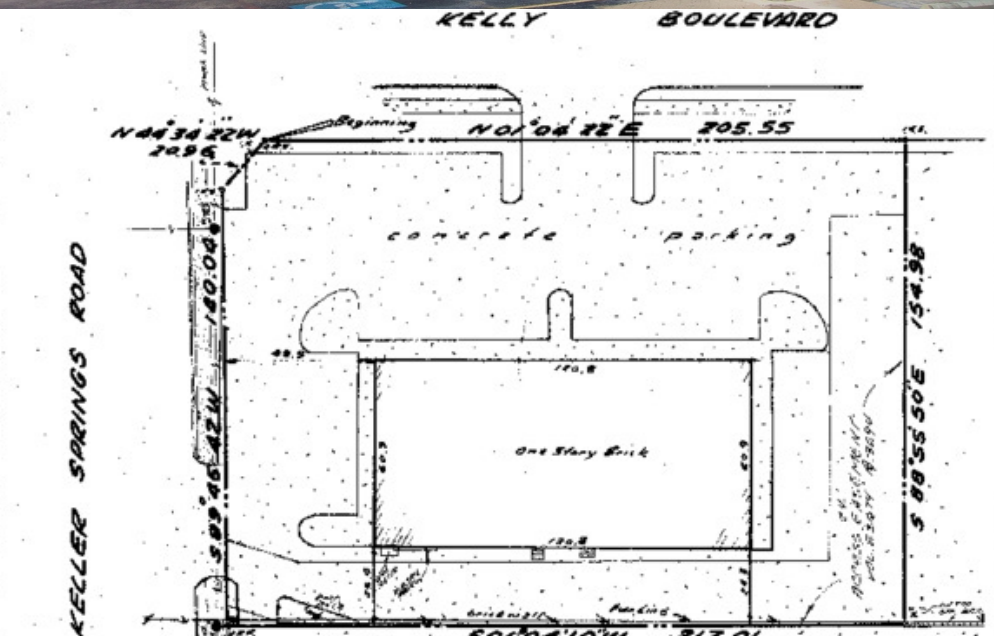
FOR LEASE

Retail Property



AVAILABLE SPACE

#101B 1,068 SF \$12.00 - 14.00 SF/yr



PROPERTY FEATURES

Great neighborhood strip center located on the corner of Keller Springs and Kelly Boulevard in Carrollton, TX. Easily accessible and highly visible corner lot just minutes from the George Bush Turnpike. Kelly Plaza boasts a strong, diverse tenant mix anchored by Pizza Hut.



www.ENGVEST.com

Daniel Eng, CCIM | CPM

PRESIDENT | BROKER

469.916.8888 x801

daniel@engvest.com

TX #0514529

Cameron Mai

VICE PRESIDENT

214.597.7153

cameron.mai@sperrycga.com

TX #619991

Judy Ratsamy

ASSOCIATE

469.916.8888 x306

judy.ratsamy@sperrycga.com

TX #635411

Each office independently owned and operated.

We obtained the information above from sources we believe to be reliable. However, we have not verified its accuracy and make no guarantee, warranty or representation about it. It is submitted subject to the possibility of errors, omissions, change of price, rental or other conditions, prior sale, lease or financing, or withdrawal without notice. We include projections, opinions, assumptions or estimates for example only, and they may not represent current or future performance of the property. You and your tax and legal advisors should conduct your own investigation of the property and transaction.

Kelly Plaza

2204 KELLY BLVD, CARROLLTON, TX 75006

FOR LEASE

Retail Property

Kelly Plaza

Kelly Boulevard

#106 - 936 SF
#104 - 1056 SF
#103 1708 SF
#102 - 1006 SF
#101B - 1068 SF
#101 1616 SF

Keller Springs Road



www.ENGVEST.com

Daniel Eng, CCIM | CPM
PRESIDENT | BROKER
469.916.8888 x801
daniel@engvest.com
TX #0514529

Cameron Mai
VICE PRESIDENT
214.597.7153
cameron.mai@sperrycga.com
TX #619991

Judy Ratsamy
ASSOCIATE
469.916.8888 x306
judy.ratsamy@sperrycga.com
TX #635411

Each office independently owned and operated.

We obtained the information above from sources we believe to be reliable. However, we have not verified its accuracy and make no guarantee, warranty or representation about it. It is submitted subject to the possibility of errors, omissions, change of price, rental or other conditions, prior sale, lease or financing, or withdrawal without notice. We include projections, opinions, assumptions or estimates for example only, and they may not represent current or future performance of the property. You and your tax and legal advisors should conduct your own investigation of the property and transaction.

Kelly Plaza

2204 KELLY BLVD, CARROLLTON, TX 75006

FOR LEASE

Retail Property



Map data ©2020 Imagery ©2020 , Maxar Technologies, U.S. Geological Survey



www.ENGVEST.com

Daniel Eng, CCIM | CPM

PRESIDENT | BROKER

469.916.8888 x801

daniel@engvest.com

TX #0514529

Cameron Mai

VICE PRESIDENT

214.597.7153

cameron.mai@sperrycga.com

TX #619991

Judy Ratsamy

ASSOCIATE

469.916.8888 x306

judy.ratsamy@sperrycga.com

TX #635411

Each office independently owned and operated.

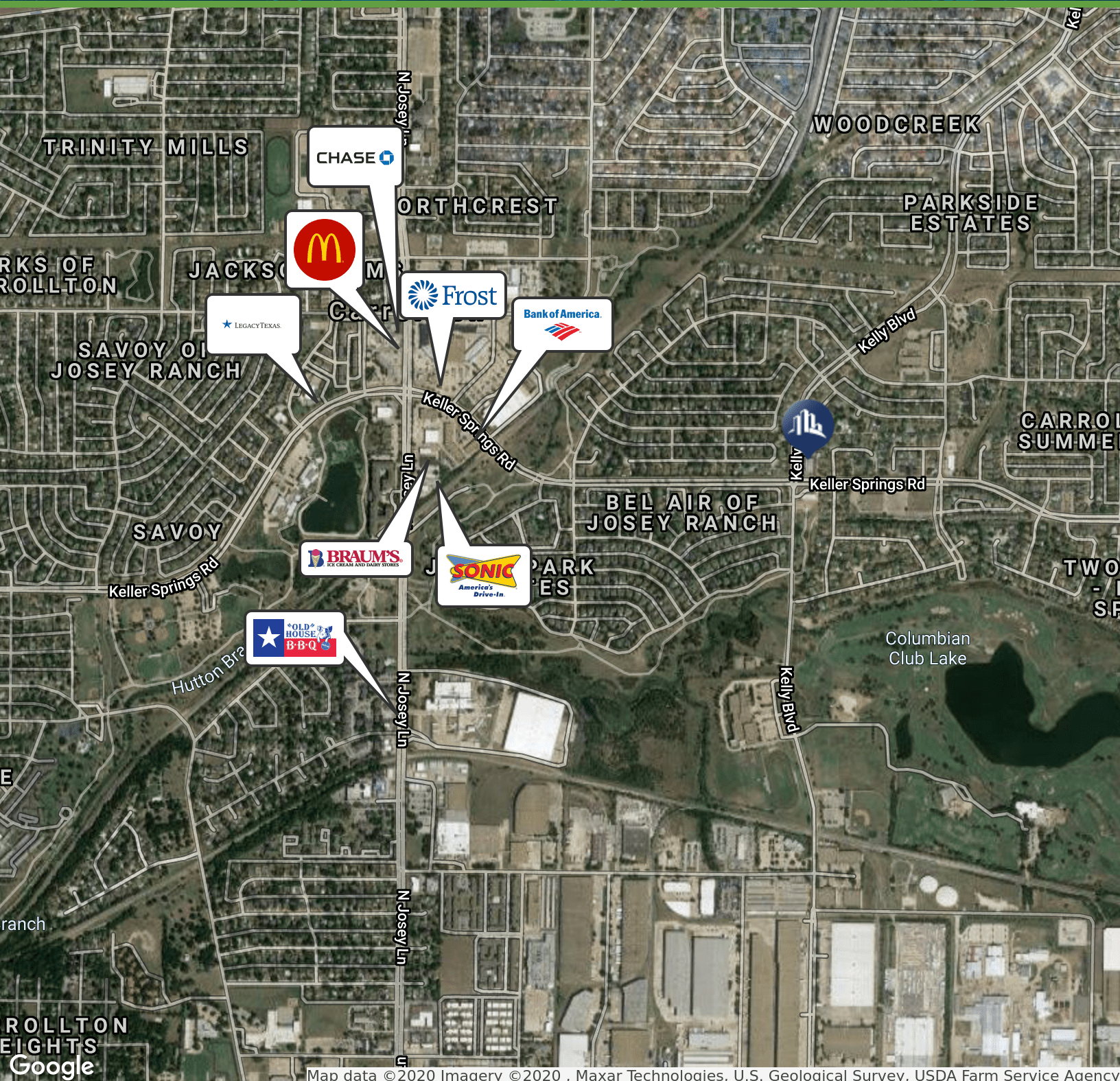
We obtained the information above from sources we believe to be reliable. However, we have not verified its accuracy and make no guarantee, warranty or representation about it. It is submitted subject to the possibility of errors, omissions, change of price, rental or other conditions, prior sale, lease or financing, or withdrawal without notice. We include projections, opinions, assumptions or estimates for example only, and they may not represent current or future performance of the property. You and your tax and legal advisors should conduct your own investigation of the property and transaction.

Kelly Plaza

2204 KELLY BLVD, CARROLLTON, TX 75006

FOR LEASE

Retail Property



www.ENGVEST.com

Daniel Eng, CCIM | CPM
PRESIDENT | BROKER
469.916.8888 x801
daniel@engvest.com
TX #0514529

Cameron Mai
VICE PRESIDENT
214.597.7153
cameron.mai@sperrycga.com
TX #619991

Judy Ratsamy
ASSOCIATE
469.916.8888 x306
judy.ratsamy@sperrycga.com
TX #635411

Each office independently owned and operated.

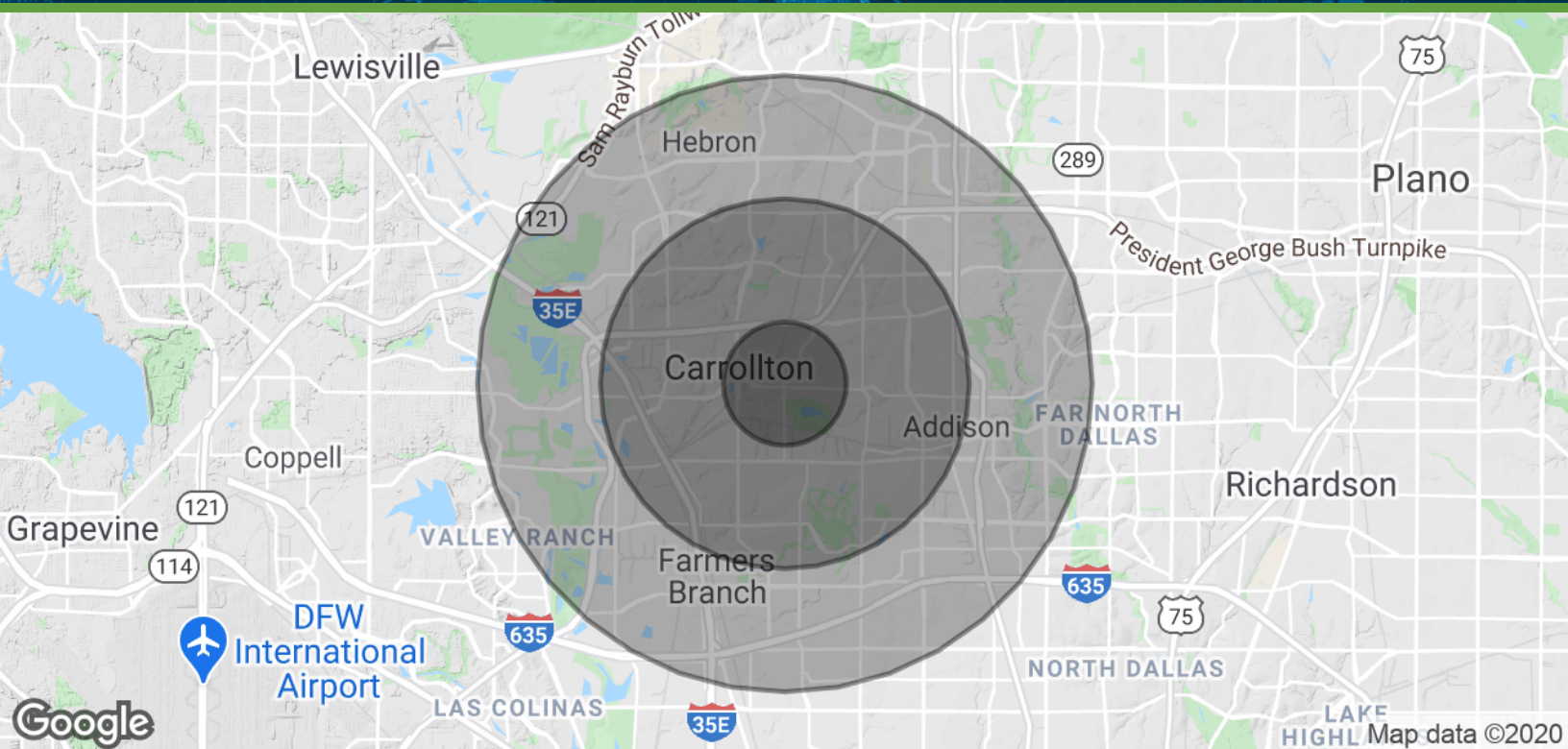
We obtained the information above from sources we believe to be reliable. However, we have not verified its accuracy and make no guarantee, warranty or representation about it. It is submitted subject to the possibility of errors, omissions, change of price, rental or other conditions, prior sale, lease or financing, or withdrawal without notice. We include projections, opinions, assumptions or estimates for example only, and they may not represent current or future performance of the property. You and your tax and legal advisors should conduct your own investigation of the property and transaction.

Kelly Plaza

2204 KELLY BLVD, CARROLLTON, TX 75006

FOR LEASE

Retail Property



POPULATION	1 MILE	3 MILES	5 MILES
Total Population	11,273	135,359	302,286
Average age	40.0	33.6	35.0
Average age (Male)	38.8	32.2	34.1
Average age (Female)	40.3	34.6	35.8

HOUSEHOLDS & INCOME	1 MILE	3 MILES	5 MILES
Total households	4,505	53,927	126,383
# of persons per HH	2.5	2.5	2.4
Average HH income	\$91,655	\$69,364	\$81,970
Average house value	\$184,317	\$194,396	\$237,217

* Demographic data derived from 2010 US Census



Daniel Eng, CCIM | CPM
 PRESIDENT | BROKER
 469.916.8888 x801
 daniel@engvest.com
 TX #0514529

Cameron Mai
 VICE PRESIDENT
 214.597.7153
 cameron.mai@sperrycga.com
 TX #619991

Judy Ratsamy
 ASSOCIATE
 469.916.8888 x306
 judy.ratsamy@sperrycga.com
 TX #635411

Each office independently owned and operated.

We obtained the information above from sources we believe to be reliable. However, we have not verified its accuracy and make no guarantee, warranty or representation about it. It is submitted subject to the possibility of errors, omissions, change of price, rental or other conditions, prior sale, lease or financing, or withdrawal without notice. We include projections, opinions, assumptions or estimates for example only, and they may not represent current or future performance of the property. You and your tax and legal advisors should conduct your own investigation of the property and transaction.

www.ENGVEST.com



Information About Brokerage Services

Texas law requires all real estate licensees to give the following information about brokerage services to prospective buyers, tenants, sellers and landlords.

TYPES OF REAL ESTATE LICENSE HOLDERS:

- **A BROKER** is responsible for all brokerage activities, including acts performed by sales agents sponsored by the broker.
- **A SALES AGENT** must be sponsored by a broker and works with clients on behalf of the broker.

A BROKER'S MINIMUM DUTIES REQUIRED BY LAW (A client is the person or party that the broker represents):

- Put the interests of the client above all others, including the broker's own interests;
- Inform the client of any material information about the property or transaction received by the broker;
- Answer the client's questions and present any offer to or counter-offer from the client; and
- Treat all parties to a real estate transaction honestly and fairly.

A LICENSE HOLDER CAN REPRESENT A PARTY IN A REAL ESTATE TRANSACTION:

AS AGENT FOR OWNER (SELLER/LANDLORD): The broker becomes the property owner's agent through an agreement with the owner, usually in a written listing to sell or property management agreement. An owner's agent must perform the broker's minimum duties above and must inform the owner of any material information about the property or transaction known by the agent, including information disclosed to the agent or subagent by the buyer or buyer's agent.

AS AGENT FOR BUYER/TENANT: The broker becomes the buyer/tenant's agent by agreeing to represent the buyer, usually through a written representation agreement. A buyer's agent must perform the broker's minimum duties above and must inform the buyer of any material information about the property or transaction known by the agent, including information disclosed to the agent by the seller or seller's agent.

AS AGENT FOR BOTH - INTERMEDIARY: To act as an intermediary between the parties the broker must first obtain the written agreement of each party to the transaction. The written agreement must state who will pay the broker and, in conspicuous bold or underlined print, set forth the broker's obligations as an intermediary. A broker who acts as an intermediary:

- Must treat all parties to the transaction impartially and fairly;
- May, with the parties' written consent, appoint a different license holder associated with the broker to each party (owner and buyer) to communicate with, provide opinions and advice to, and carry out the instructions of each party to the transaction.
- Must not, unless specifically authorized in writing to do so by the party, disclose:
 - that the owner will accept a price less than the written asking price;
 - that the buyer/tenant will pay a price greater than the price submitted in a written offer; and
 - any confidential information or any other information that a party specifically instructs the broker in writing not to disclose, unless required to do so by law.

AS SUBAGENT: A license holder acts as a subagent when aiding a buyer in a transaction without an agreement to represent the buyer. A subagent can assist the buyer but does not represent the buyer and must place the interests of the owner first.

TO AVOID DISPUTES, ALL AGREEMENTS BETWEEN YOU AND A BROKER SHOULD BE IN WRITING AND CLEARLY ESTABLISH:

- The broker's duties and responsibilities to you, and your obligations under the representation agreement.
- Who will pay the broker for services provided to you, when payment will be made and how the payment will be calculated.

LICENSE HOLDER CONTACT INFORMATION: This notice is being provided for information purposes. It does not create an obligation for you to use the broker's services. Please acknowledge receipt of this notice below and retain a copy for your records.

WE Partners, LLC	9008969	info@engvest.com	(469)916-8888
Licensed Broker /Broker Firm Name or Primary Assumed Business Name	License No.	Email	Phone
Daniel C. Eng	0514529	daniel@engvest.com	(469)916-8888
Designated Broker of Firm	License No.	Email	Phone
Calvin Wong	0570017	calvin.wong@sperrycga.com	(469)916-8888
Licensed Supervisor of Sales Agent/ Associate	License No.	Email	Phone
Sales Agent/Associate's Name	License No.	Email	Phone
Buyer/Tenant/Seller/Landlord Initials		Date	

Regulated by the Texas Real Estate Commission

Information available at www.trec.texas.gov
IABS 1-0 Date