

# 351 SANTA FE DR

ENCINITAS, CA 92024



MEDICAL OFFICE SPACE FOR LEASE





## Highlights



**2,729 SF** office/medical suite customizable to your specific needs; located in 25,006 SF building with recently enhanced common areas



Immediately adjacent to Scripps Memorial Hospital Encinitas, which shares a campus with many other physician offices and medical buildings, including Scripps Clinic Encinitas, an outpatient imaging center, a 24-hour emergency room & multiple ICUs.



**Walking distance** to Swami's Beach, Encinitas Community Park, 24-Hour Fitness, Rite Aid/pahrmacy, Vons & many other amenities



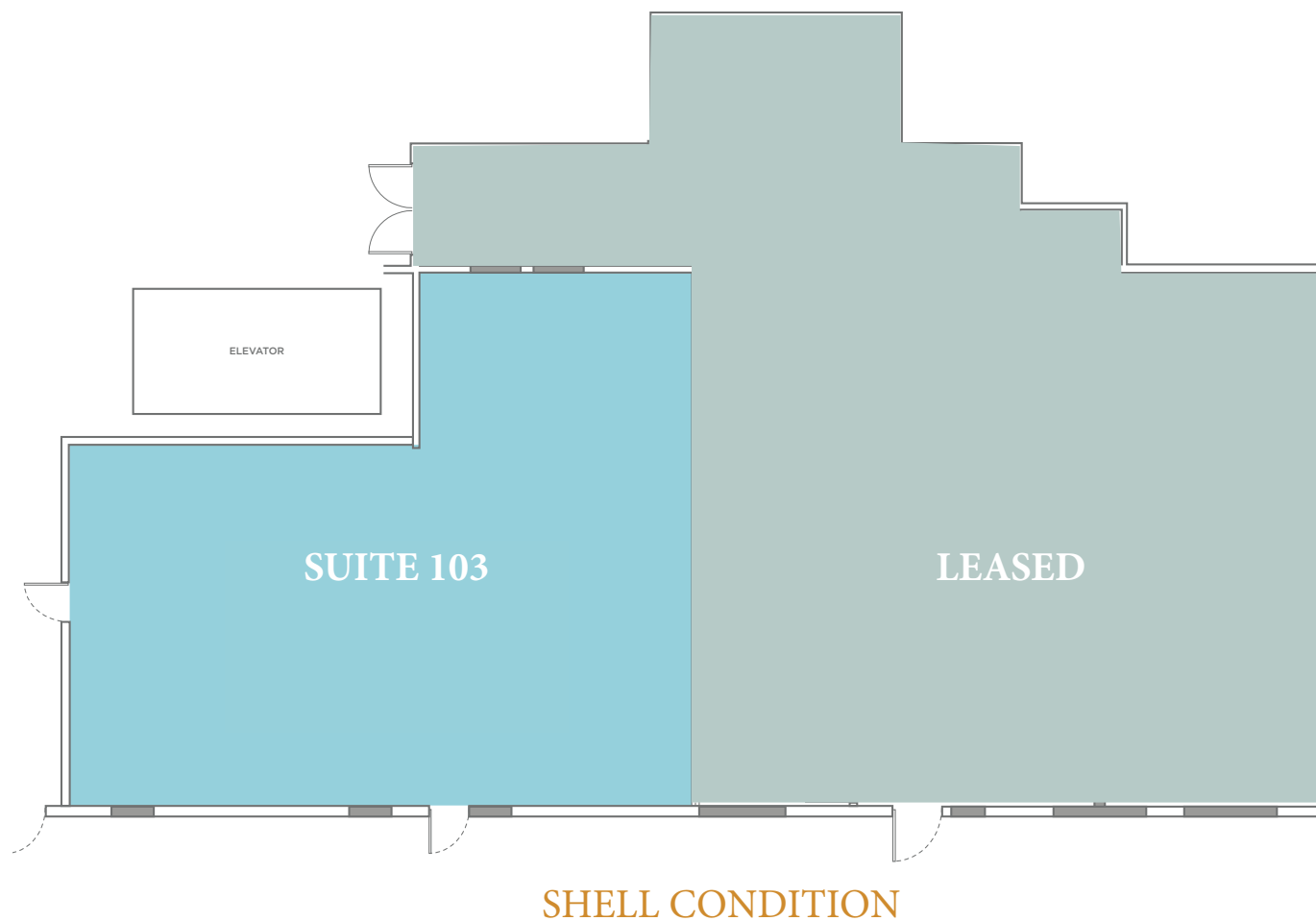
**Easy access** to I-5 and Coast Highway



**Price: \$3.95/SF** Modified Gross plus Electricity & Janitorial



# FLOOR PLANS - FIRST FLOOR



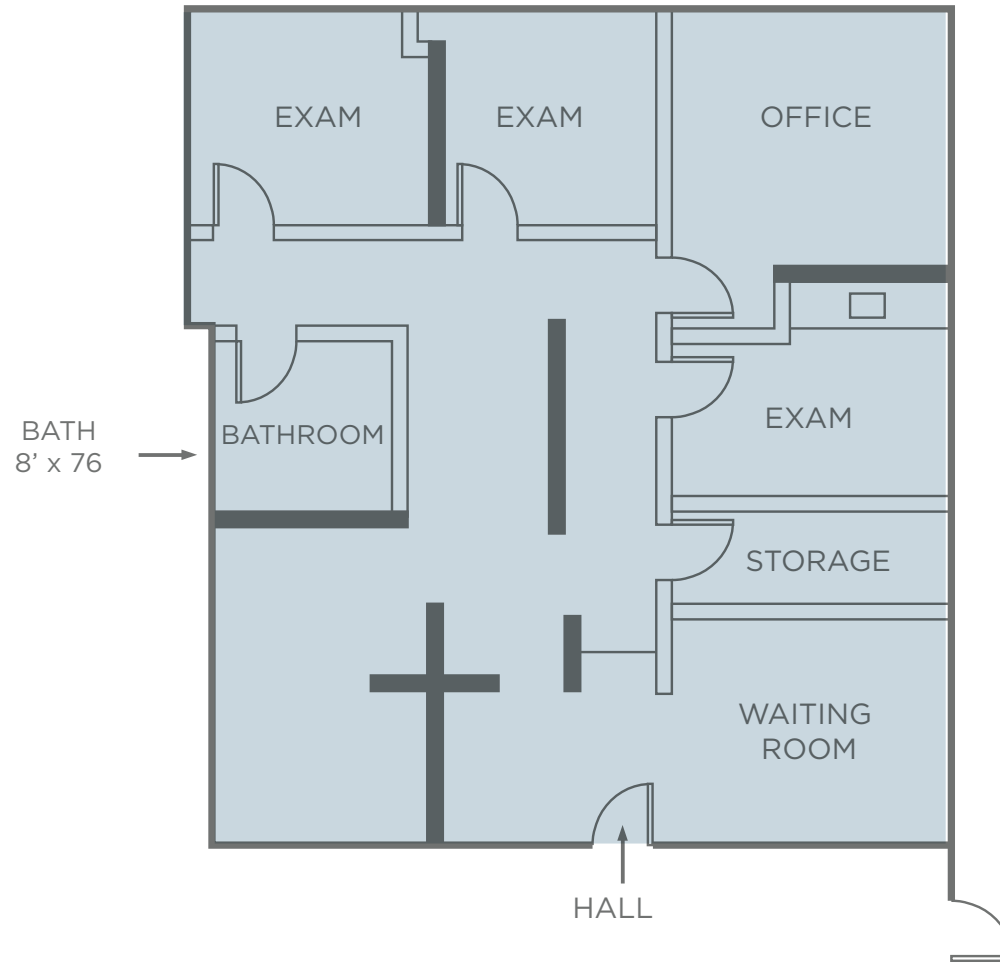
---

## **Suite 103**

1,408 RSF

*Available January 1, 2024*

# FLOOR PLANS - SECOND FLOOR



**Suite 240 - As Built**

1,321 RSF





**351 SANTA FE DR**  
ENCINITAS, CA 92024

  
Scripps Memorial Hospital  
Encinitas

- AMENITIES:**
- Swamis
  - City Taco
  - Philz Coffee
  - Goodonya
  - 101 Diner
  - Encinitas Cafe
  - Maurizio's Trattoria Italiana
  - Better Buzz Coffee Roasters
  - Lotus Cafe and Juice Bar
  - Sushi Lounge Encinitas
  - Encinitas Community Park
  - Vons
  - Rite Aid/Pharmacy
  - 24 Fitness
  - Earth's Elements

**BROOKS CAMPBELL**  
Senior Director  
Phone: 760-431-4215  
brooks.campbell@cushwake.com  
CA License #01380901

**PETER CURRY**  
Managing Director  
Phone: 760-431-4238  
peter.curry@cushwake.com  
CA License #01241186

