

FOR SALE

±2,500 SF INDUSTRIAL UNIT

1525 Marlborough Avenue, Unit G, Riverside, CA 92507

SALE PRICE
\$400,000

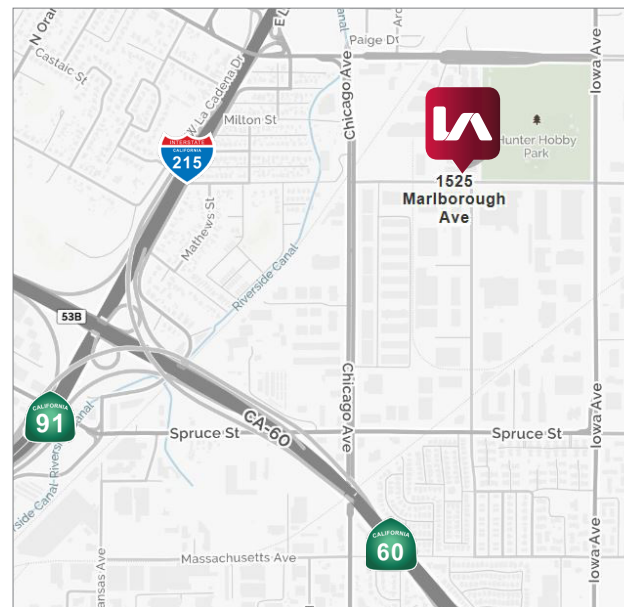


LISTING DATA

AVAILABLE SF:	±2,500 SF
OFFICE SF:	±615
PROPERTY TYPE :	Industrial Building
GL DOORS :	One (14' x 12')
CLEAR HEIGHT :	16' - 18'
POWER :	500 Amps; 277/480V and 120/208V (Verify) Distributed
ZONING :	BMP
APN :	249-051-007

COMMENTS

Reception/Bullpen, Private Office, 2 Restrooms, Kitchenette.
Immediate access to 91/60/215 Freeways. Hunter Park neighborhood with nearby amenities. Cooled warehouse, T-5 lighting, air and water lines.



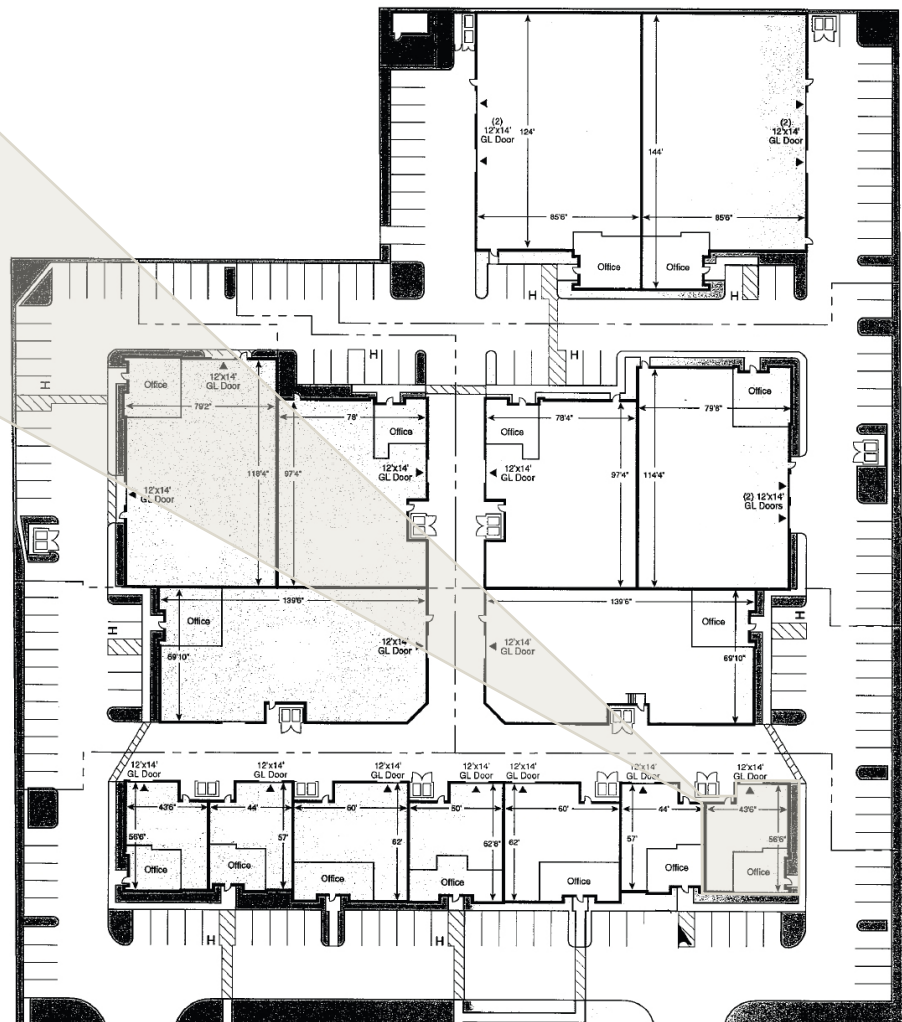
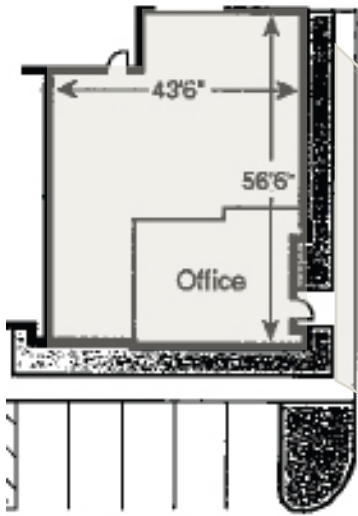
TOBY TEWELL
Lee & Associates Inc. - Riverside
ttewell@lee-associates.com
D 951.276.3662
CALBRE #01822772

MILES TURNER
Windermere Real Estate
milesturner@windermere.com
D 951.640.7345
CALBRE #1398531

FOR SALE

±2,500 SF INDUSTRIAL UNIT

1525 Marlborough Avenue, Unit G, Riverside, CA 92507



TOBY TEWELL

Lee & Associates Inc. - Riverside
ttewell@lee-associates.com
D 951.276.3662
CALBRE #01822772

MILES TURNER

Windermere Real Estate
milesturner@windermere.com
D 951.640.7345
CALBRE #1398531

