

For Sale or Lease | Suite 100

740 OAK AVENUE PARKWAY, FOLSOM, CA



**SUITE 100**

**±1,937 SF Office/Medical Condo**

- For sale: \$600,470
- For lease: \$2.25/SF MG
- Building signage available
- Popular E. Bidwell business corridor
- Efficient floor plan
- Located near amenities

**KRIS REILLY**

Senior Vice President  
+1 916 563 3016  
kris.reilly@colliers.com  
Lic. No. 01226908

**Colliers International**  
301 University Avenue | Suite 100  
Sacramento, CA 95825  
P: +1 916 929 5999  
[www.colliers.com/sacramento](http://www.colliers.com/sacramento)

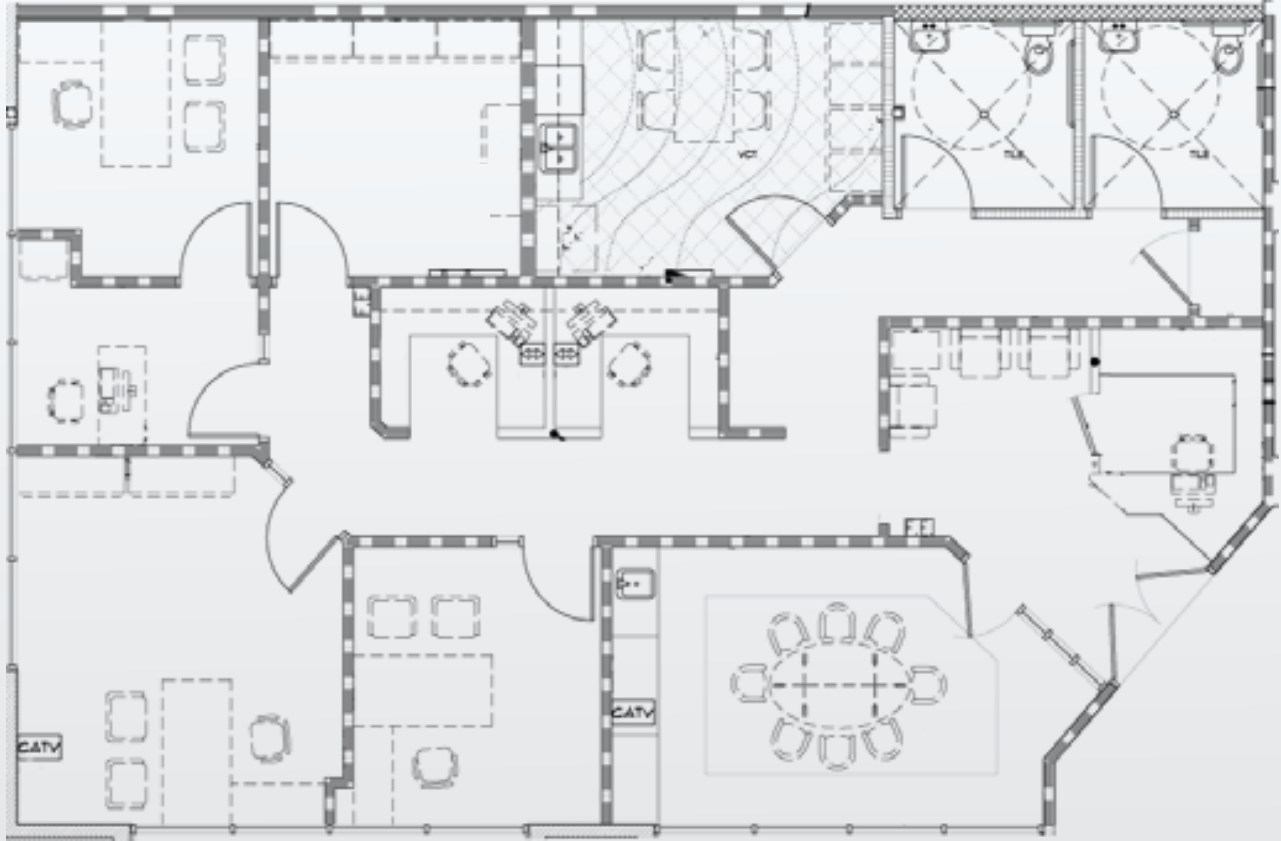


# Available Space & Costs

For sale **\$600,470**

For lease **\$2.25/SF MG**

Available SF **±1,937**



Floor plan | Suite 100 - ±1,937 SF





DISTANCE TO	MILES
SACRAMENTO	±27.1
ROSEVILLE	±15.3
NATOMAS	±32.1
ELK GROVE	±35.4
SMF (AIRPORT)	±37

740 Oak Avenue Parkway is located in Folsom, CA along the E. Bidwell business corridor. The property is within close proximity to Highway 50 and provides convenient access to Folsom retail, shopping and dining amenities within 2 miles.

**KRIS REILLY**  
 Senior Vice President  
 +1 916 563 3016  
 kris.reilly@colliers.com  
 Lic. No. 01226908

This document has been prepared by Colliers International for advertising and general information only. Colliers International makes no guarantees, representations or warranties of any kind, expressed or implied, regarding the information including, but not limited to, warranties of content, accuracy and reliability. Any interested party should undertake their own inquiries as to the accuracy of the information. Colliers International excludes unequivocally all inferred or implied terms, conditions and warranties arising out of this document and excludes all liability for loss and damages arising there from. This publication is the copyrighted property of Colliers International and/or its licensor(s). Real estate officer license corporation identification number 01908588. ©2019. All rights reserved.

