

## Park 8000 Office Space

8009 South 180th Street,  
Kent, WA

Great Medical Space  
Available

Building signage  
available

Suite 114: 1,794 RSF on end-  
cap facing 180th Street

Suite 108: 1,136 RSF  
facing 180th Street

Outstanding access to SR-167

High visibility location fronting  
on South 180th Street

Close to food services

Asking \$18.00 gross



### Location



### Contact

**Richard Davidson**

206.248.7314

richardd@kiddermathews.com

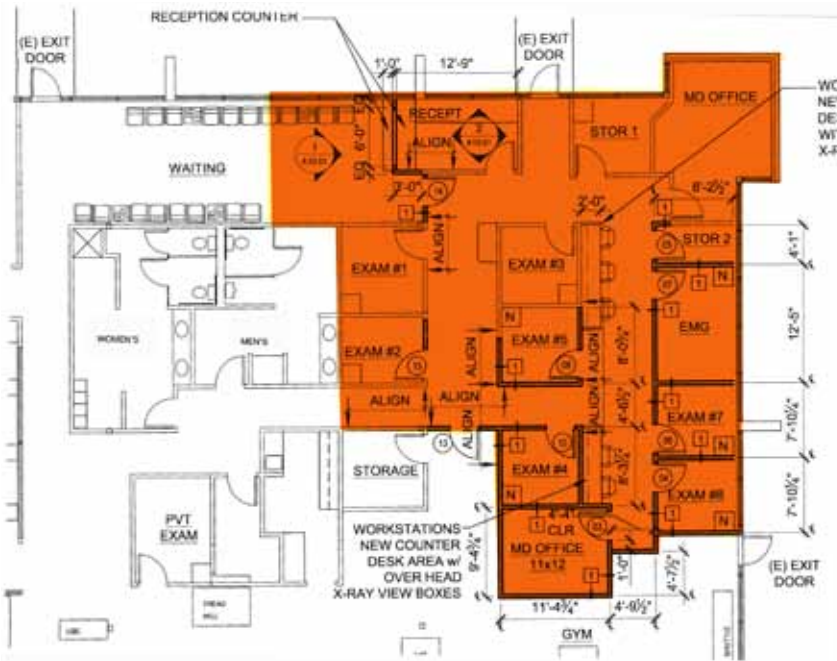
**Brian Clapp**

206.248.7316

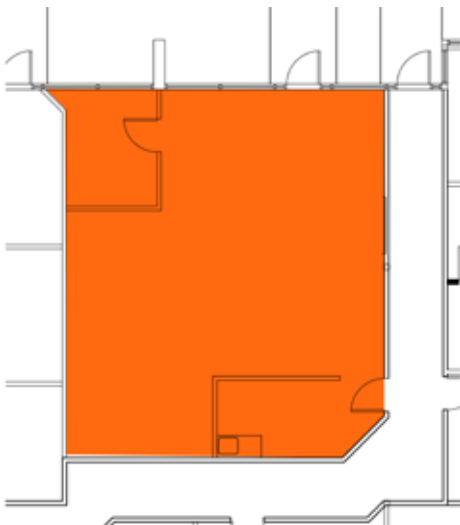
bclapp@kiddermathews.com

## Park 8000 Office Space

### Suite 114



### Suite 108



### Contact

**Richard Davidson**  
206.248.7314  
richardd@kiddermathews.com

**Brian Clapp**  
206.248.7316  
bclapp@kiddermathews.com