



SUGARHOUSE MEDICAL/OFFICE FOR LEASE

2159 SOUTH 700 EAST, SALT LAKE CITY, UTAH 84106



PROPERTY INFORMATION

- Suite 150: 1,405 SF Available
- Includes: (4) Offices, Reception Area, Break Room Area & Storage
- Many Restaurants Nearby
- Less Than 10 Minutes to Downtown Salt Lake
- 15 Minutes to Salt Lake International Airport
- Easy Access to I-80 and I-15

LEASE RATE REDUCED!

FROM ~~\$24.50/SF~~ TO \$22.50/SF FULL SERVICE

DEMOGRAPHICS

	1 Mile	3 Mile	5 Mile
Population	11,764	145,511	354,955
Households	7,060	64,442	150,165
Avg. Household Income	\$50,437	\$60,917	\$61,016

TRAFFIC COUNTS

700 East: 47,000 Annual Average Daily Traffic
 2100 South: 23,000 Annual Average Daily Traffic

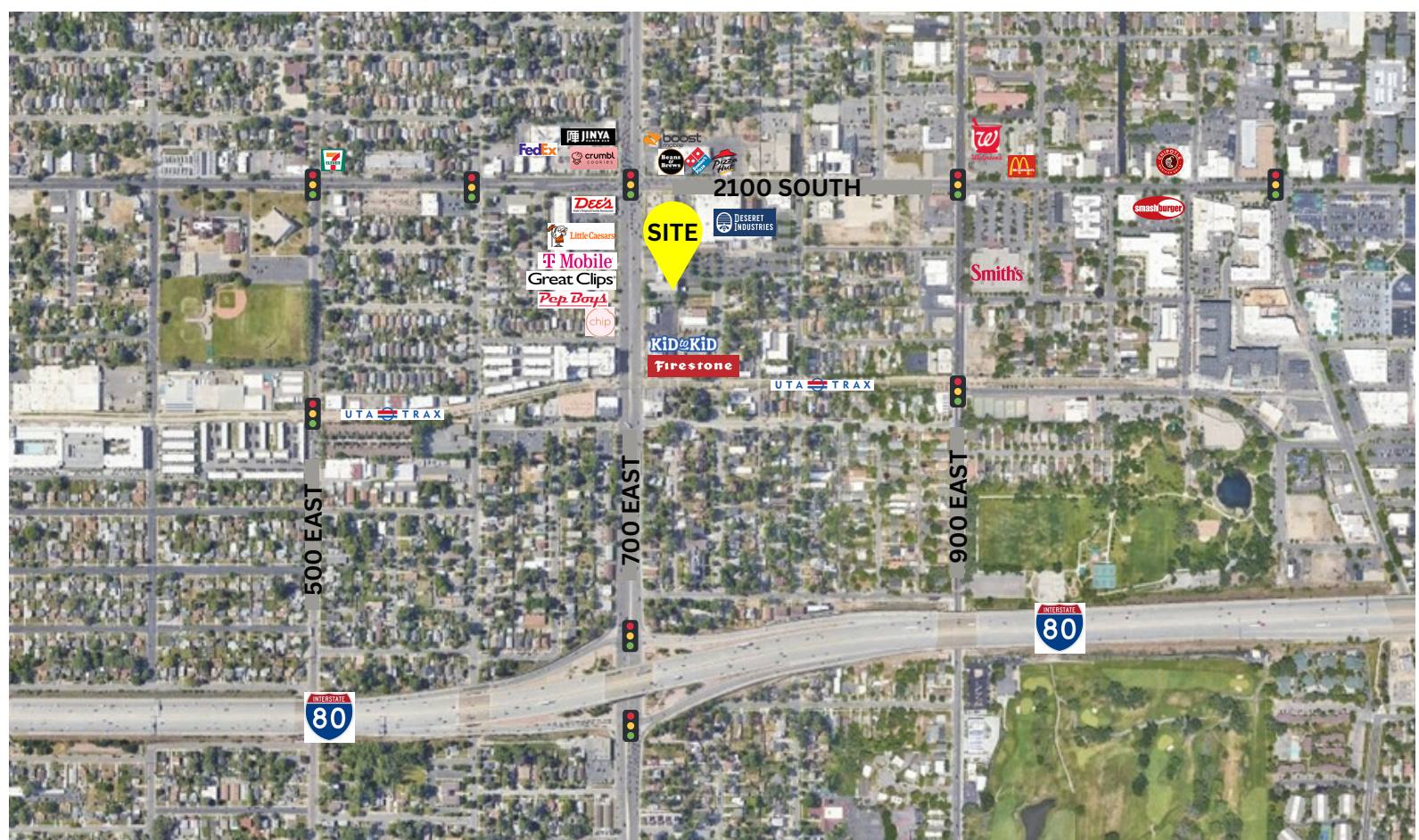
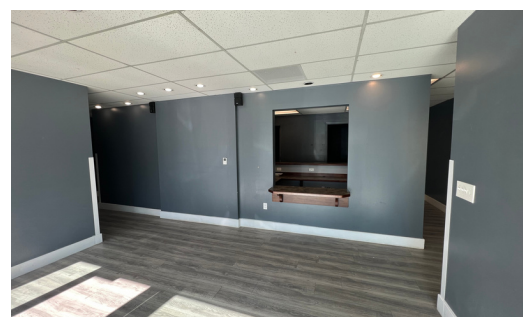
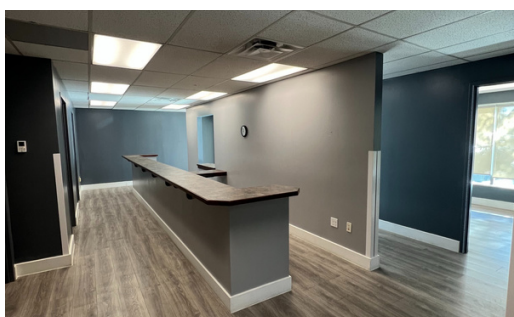
801.617.1707

CRYSTAL JOHNSON
 crystal.johnson@crcnationwide.com



SUGARHOUSE MEDICAL/OFFICE FOR LEASE

2159 SOUTH 700 EAST, SALT LAKE CITY, UTAH 84106



This information is given with the understanding that all negotiations and/or real estate activity related to the property described above shall be conducted through this cRc Nationwide office. The above information while not guaranteed, was obtained from sources we believe to be reliable.

801.617.1707

CRYSTAL JOHNSON
crystal.johnson@crcnationwide.com