

INDUSTRIAL
FOR LEASE

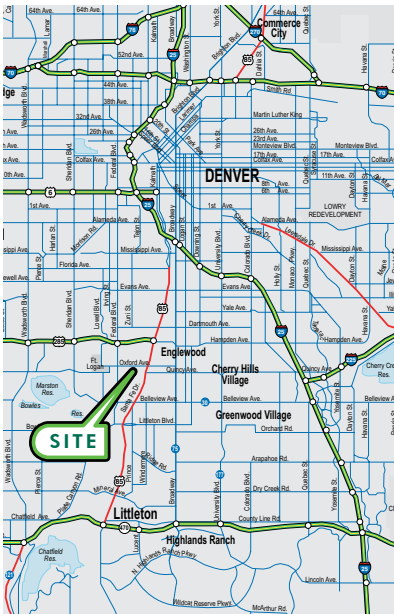
4231 S. NATCHES CT. UNIT B

OXFORD-SANTA FE BUSINESS PARK :: ENGLEWOOD, CO 80110

DRIVE-IN LOADING
DOORS (10' x 10')

ON-SITE MANAGEMENT

LOCATION MAP



FOR MORE
INFORMATION
PLEASE CONTACT

Murray Platt, SIOR

First Vice President
720.528.6413
murray.platt@cbre.com

Paul Kluck, SIOR

First Vice President
720.528.6405
paul.kluck@cbre.com

On-Site Office

303.762.1311



AVAILABLE:	2,400 SF
OFFICE AREA:	1,200 SF
LOADING:	1 drive-in door
ELECTRICAL:	100 amps, 3 phase
WAREHOUSE CLEARANCE:	12'
YEAR BUILT:	1983-1984
LEASE RATE:	\$7.50/SF NNN
NNN EXPENSES:	\$2.50/SF

BUILDING FEATURES:

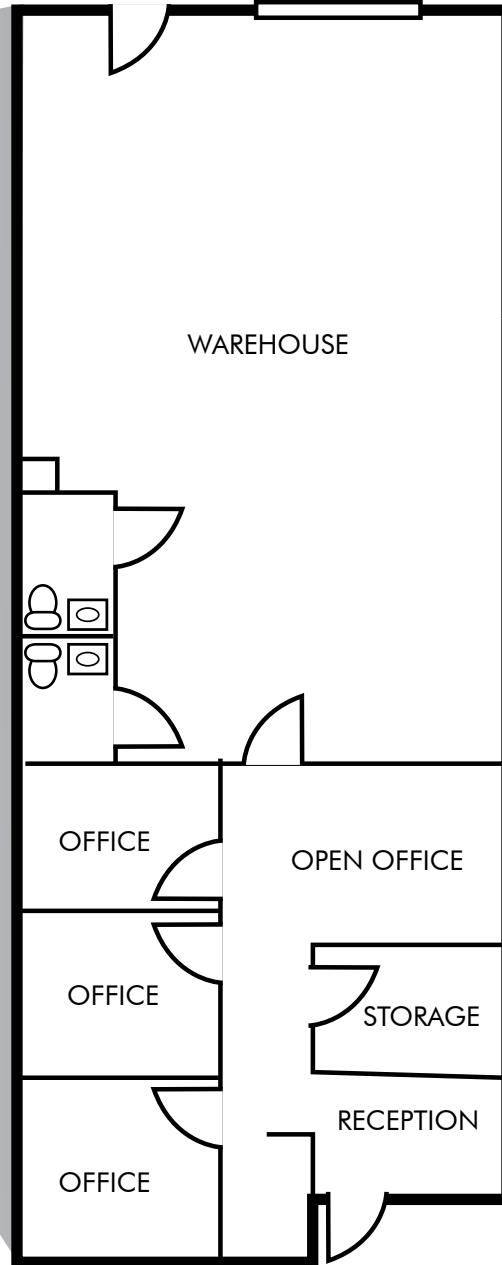
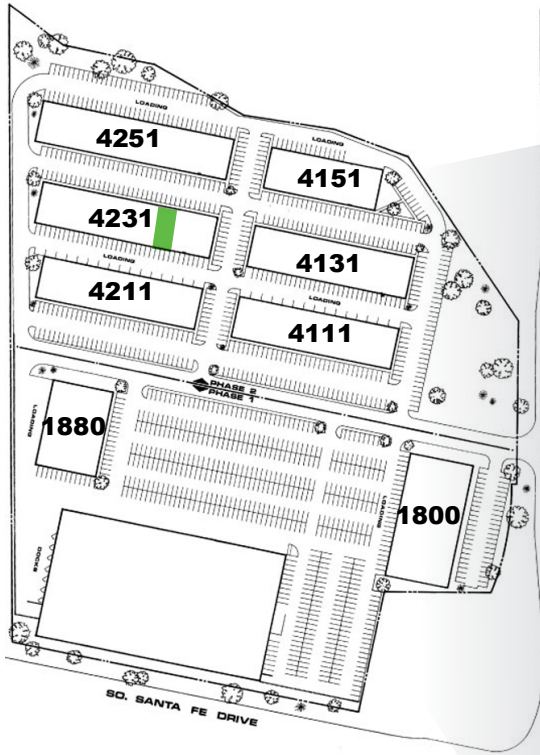
- :: 3' x 8' backlit identification sign
- :: Individual meter in each unit for gas and electricity
- :: Close to Riverpoint Shopping Center, banks, restaurants, Target and Costco
- :: Free tenant and customer parking
- :: Floor drains

CBRE

INDUSTRIAL
FOR LEASE

4231 S. NATCHES CT. UNIT B

OXFORD-SANTA FE BUSINESS PARK :: ENGLEWOOD, CO 80110



* measurements are approximate

FOR MORE
INFORMATION
PLEASE
CONTACT

Murray Platt, SIOR

First Vice President
720.528.6413
murray.platt@cbre.com

Paul Kluck, SIOR

First Vice President
720.528.6405
paul.kluck@cbre.com

CBRE, Inc.
8390 E. Crescent Parkway
Suite 300
Greenwood Village, CO 80111
www.cbre.com/denver

© 2014 CBRE, Inc. This information has been obtained from sources believed reliable. We have not verified it and make no guarantee, warranty or representation about it. Any projections, opinions, assumptions or estimates used are for example only and do not represent the current or future performance of the property. You and your advisors should conduct a careful, independent investigation of the property to determine to your satisfaction the suitability of the property for your needs.

