

FOR LEASE

UNIQUE LITTLE ITALY OFFICE BUILDING

1441 STATE STREET | SAN DIEGO | CA | 92101



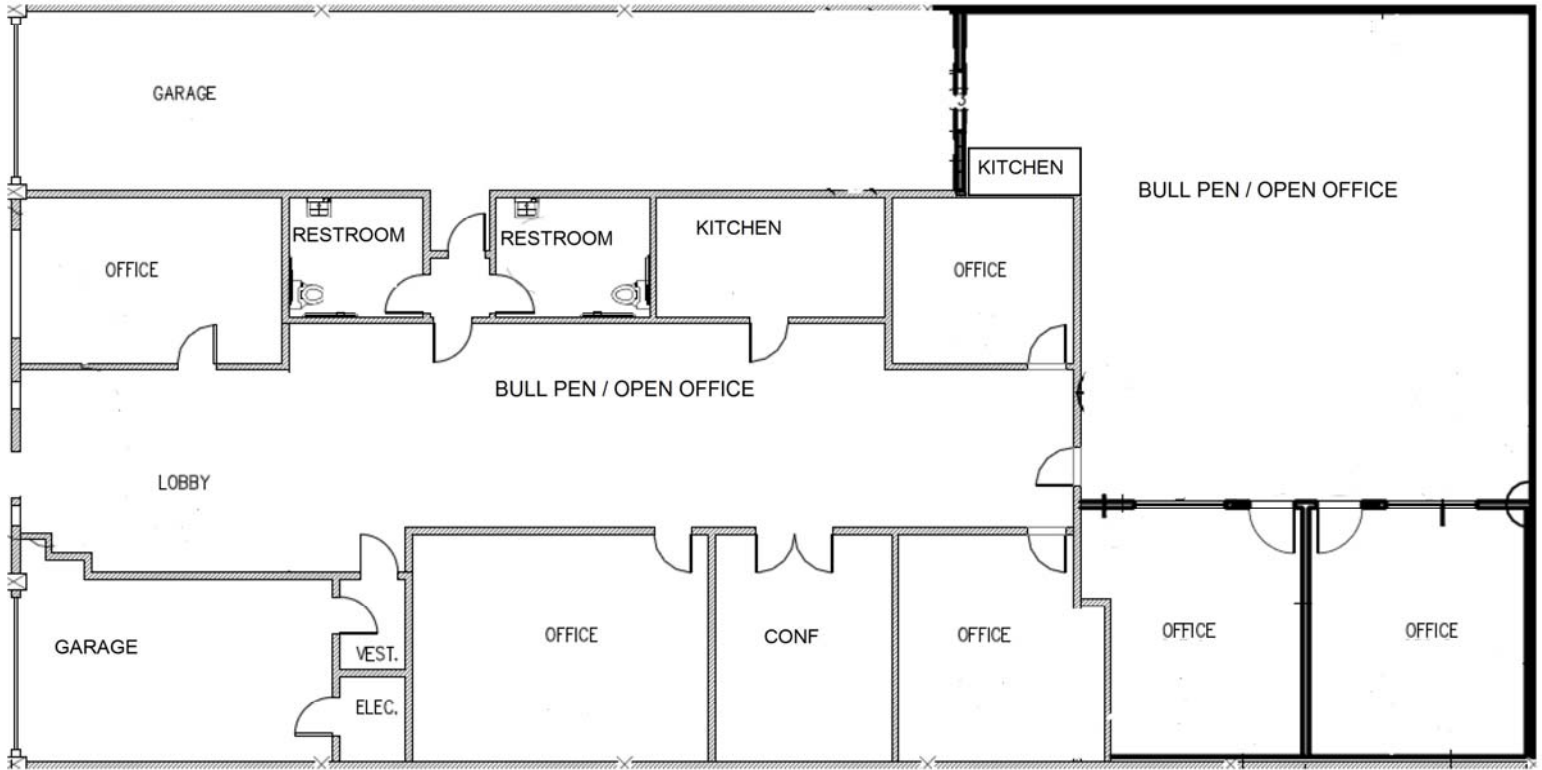
Steven Martini
smartini@qfcre.com
619-243-8451

Peter Wright
pwright@qfcre.com
619-243-8450

1495 Pacific Highway, Suite 450, San Diego, CA 92101 | (619) 243-8454 | www.qfcre.com

The information contained herein has been obtained from sources considered to be reliable, but no guarantee of its accuracy is made by this company. In addition, no representation is made respecting zoning, condition of title, dimensions, or any matters of a legal or environmental nature. Such matters should be referred to legal counsel for determination. Terms and conditions are subject to change without prior notice. Subject to errors and omissions.

FLOOR PLAN



1441 STATE STREET— DETAILS

- ◆ Approximate 5,000 square foot building
- ◆ Six (6) private offices
- ◆ Two (2) large open office areas and dedicated reception area
- ◆ Glass double door conference room
- ◆ Two (2) garages (indoor parking for four (4) vehicles)
- ◆ Two (2) Kitchens
- ◆ ADA compliant men's and woman's restrooms
- ◆ 20'+ ceilings, exposed truss, abundance of natural light
- ◆ Central Little Italy location
- ◆ Walking distance to Little Italy restaurants, coffee shops and new San Diego Central and Federal Courthouses
- ◆ Ideal layout for professional services, tech or creative firm

LEASE RATE

- ◆ Negotiable

PHOTOS

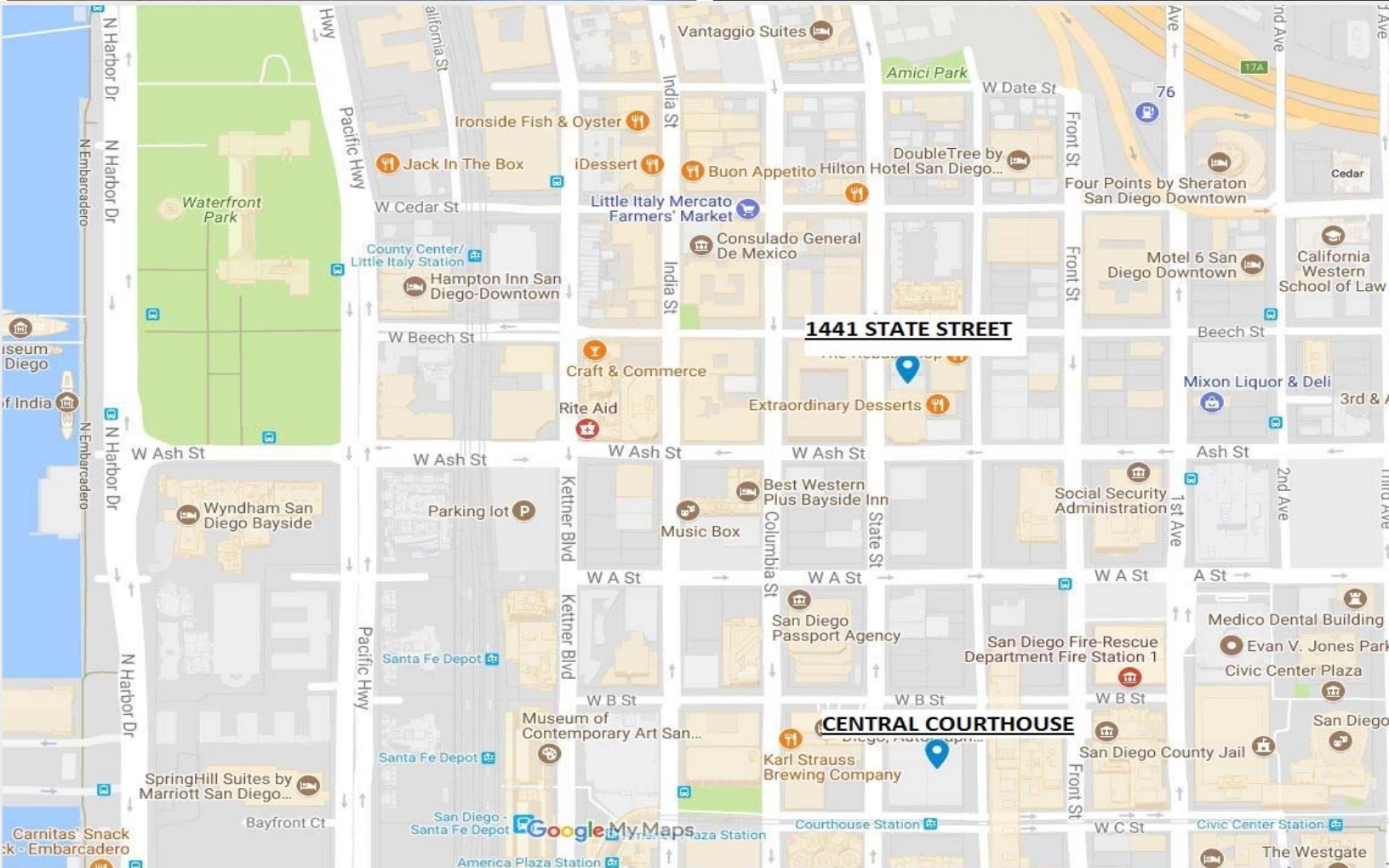
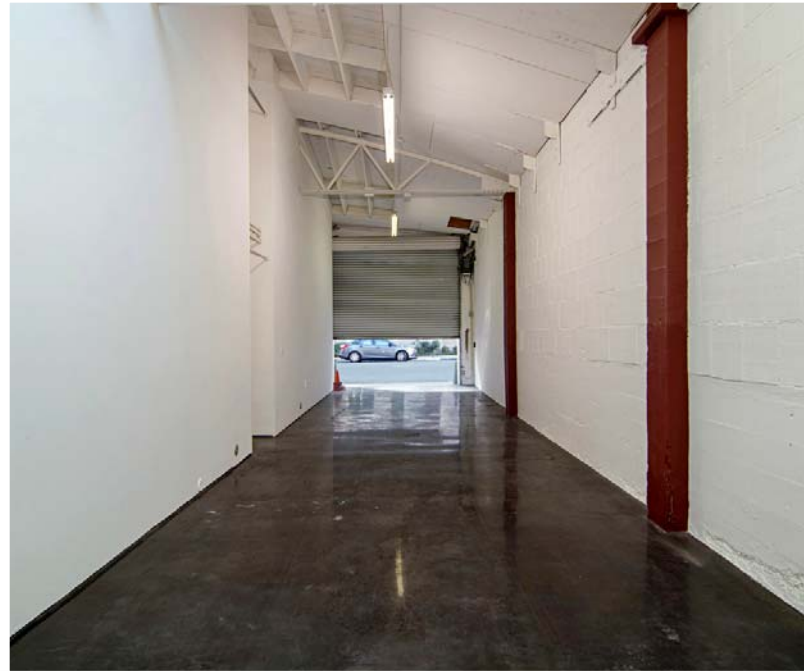


Steven Martini
Lic # 01330605
619-243-8451
smartini@qfcre.com

Peter Wright
Lic #01846272
619-243-8450
pwright@qfcre.com

1495 Pacific Highway, Suite 450, San Diego, CA 92101 | (619) 243-8454 | www.qfcre.com

The information contained herein has been obtained from sources considered to be reliable, but no guarantee of its accuracy is made by this company. In addition, no representation is made respecting zoning, condition of title, dimensions, or any matters of a legal or environmental nature. Such matters should be referred to legal counsel for determination. Terms and conditions are subject to change without prior notice. Subject to errors and omissions.



1495 Pacific Highway, Suite 450, San Diego, CA 92101 | (619) 243-8454 | www.qfcre.com

The information contained herein has been obtained from sources considered to be reliable, but no guarantee of its accuracy is made by this company. In addition, no representation is made respecting zoning, condition of title, dimensions, or any matters of a legal or environmental nature. Such matters should be referred to legal counsel for determination. Terms and conditions are subject to change without prior notice. Subject to errors and omissions.