

Northgate Professional Center

899 NORTHGATE DR. | SAN RAFAEL

Located In The Heart Of Northgate

- Stylish, Class A Office Space
- Luxury lobby with high-end finishes, elevators, natural and recessed lighting
- “O” (Office District) zoning for office and medical use | Within 1 Mile of Kaiser Permanente Hospital
- Flexible office configurations between 1,920 – 5,219 sqft
- Conference room and kitchenette space available
- 170 covered garage spaces with 50 additional rooftop spaces for visitors and tenants



LEASEPFI
COMMERCIAL

Nicholas Zabelin | 415.883.2736 x326 | nzabelin@leasepfi.com

Northgate Professional Center

899 NORTHGATE DR. | SAN RAFAEL



Lease Information

Lease Type:	Full Service
Total Space:	1,359 - 5,219 SF

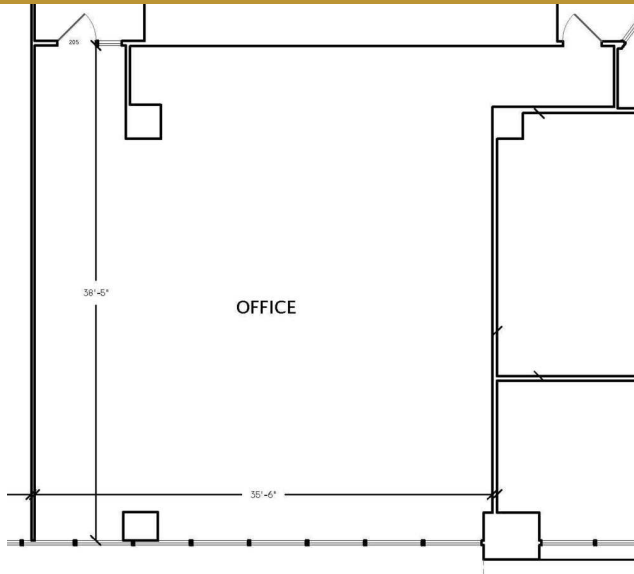
Lease Term:	Three to Five Years
Lease Rate:	\$3.30 - \$3.30 SF/month

Available Spaces

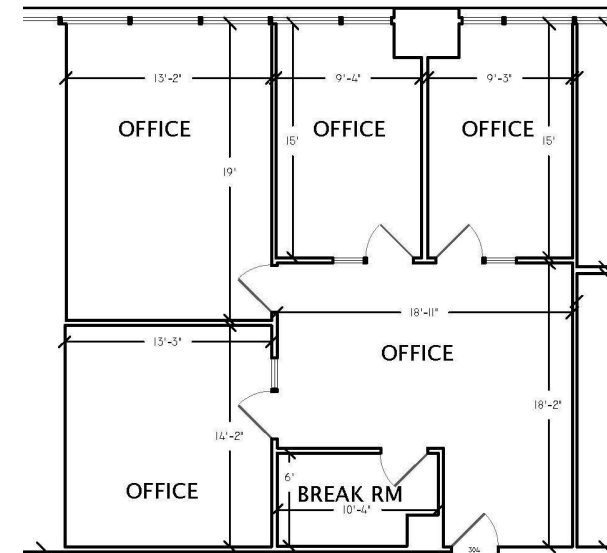
Suite	Size (SF)	Lease Type	Lease Rate	Description
205	1,920 SF	Full Service	\$3.30 SF/month	A spacious private office with windows.
304	1,359 SF	Full Service	\$3.30 SF/month	Suite contains four private offices, reception area, and break room.
415	5,219 SF	Full Service	\$3.30 SF/month	Large office suite with a mix of private offices, open work areas, a kitchen, and a file room.

Northgate Professional Center

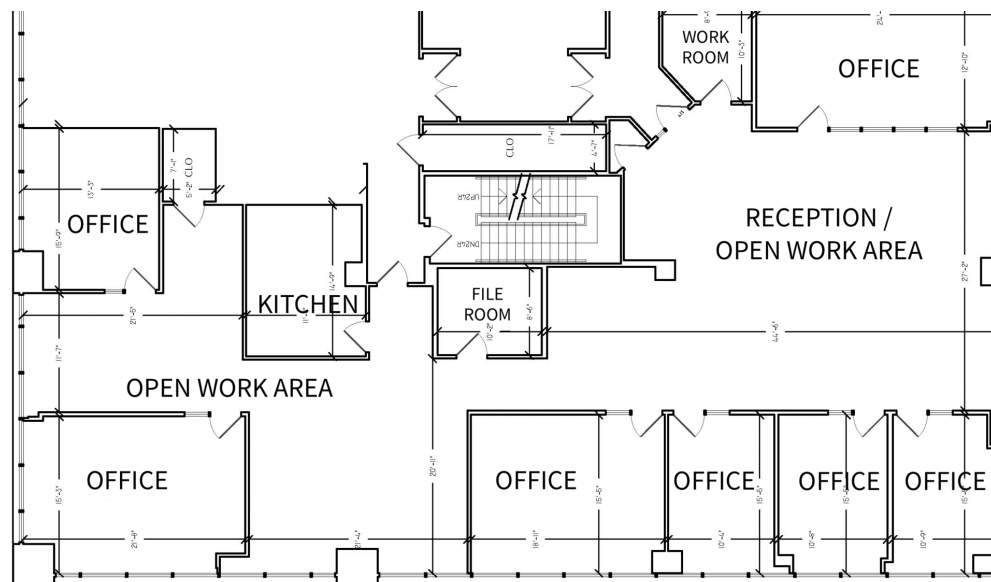
899 NORTHGATE DR. | SAN RAFAEL



Suite 205 | 1,920 sf | Open office



Suite 304 | 1,359 sf | Reception, 4 private offices, and a break room.



Suite 415 | 5,219 sf | 7 offices and 2 open work areas with a file room, break room and kitchen.

Northgate Professional Center

899 NORTHGATE DR. | SAN RAFAEL



Northgate Professional Center

899 NORTHGATE DR. | SAN RAFAEL

