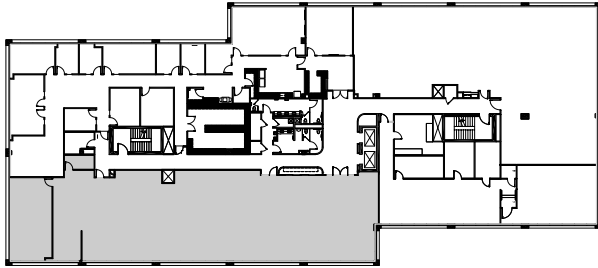


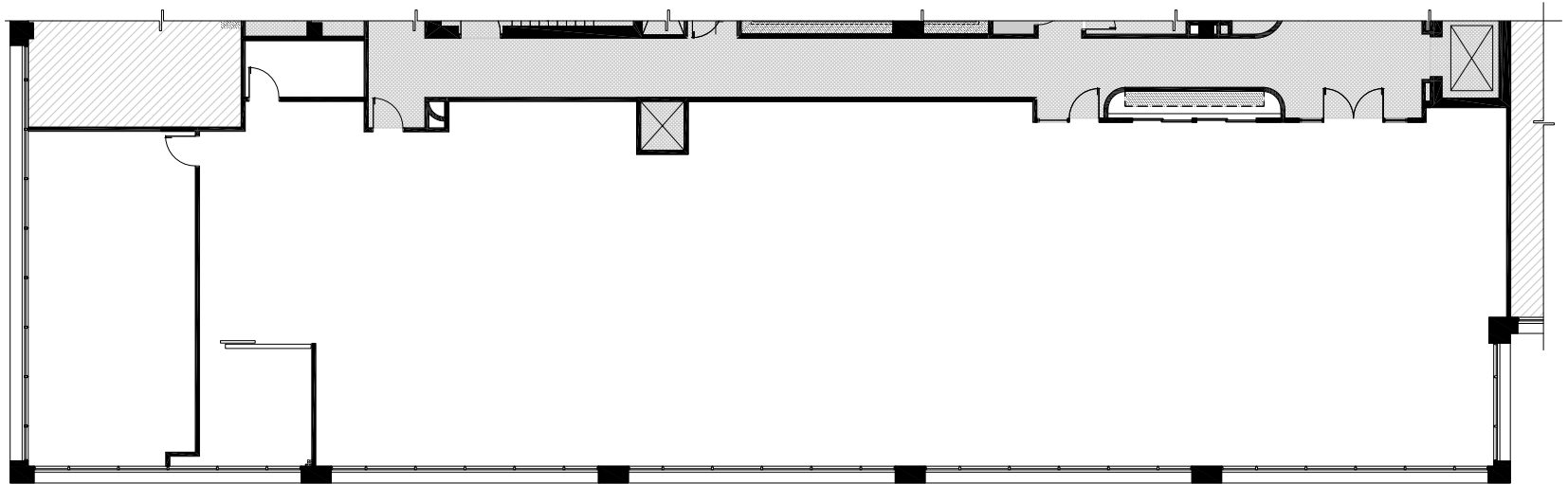
AURORA CORPORATE PLAZA

12100 E Iliff Ave | Aurora, CO

BUILDING A SUITE 300 6,484 SF



Key Plan
Not to Scale



JOHN MILLER
Vice President
+1 720 528 6511
john.d.miller@cbre.com

JOHN MAROLD
Senior Vice President
+1 720 528 6355
john.marold@cbre.com



CBRE