

5135 PLYMOUTH ROAD  
ANN ARBOR, MICHIGAN



**SIGNATURE  
ASSOCIATES**  
KNOW SIGNATURE | KNOW RESULTS

RETAIL FOR SALE  
2,081 Square Feet Available



## PROPERTY FEATURES

- 2,081 available square feet
- Zoned B-1
- 14' clear height
- Located on 0.61 acres with (10) parking spaces
- Sale Price: \$325,000 (\$156.17/sq. ft.)

**Comments:** Redevelopment opportunity in the Village of Dixboro, in Ann Arbor. Existing building is surrounded by residential and mixed-use zoning. Excellent for retail, office, or medical use.



For more information, please contact:

**MARVIN PETROUS**  
(248) 359 0647  
mpetrous@signatureassociates.com

**JIM MONTGOMERY**  
(248) 359 0614  
jmontgomery@signatureassociates.com

**SIGNATURE ASSOCIATES**  
One Towne Square, Suite 1200  
Southfield, MI 48076  
www.signatureassociates.com

# 5135 Plymouth Road– Ann Arbor, Michigan

Retail For Sale

2,081  
Square Feet  
AVAILABLE

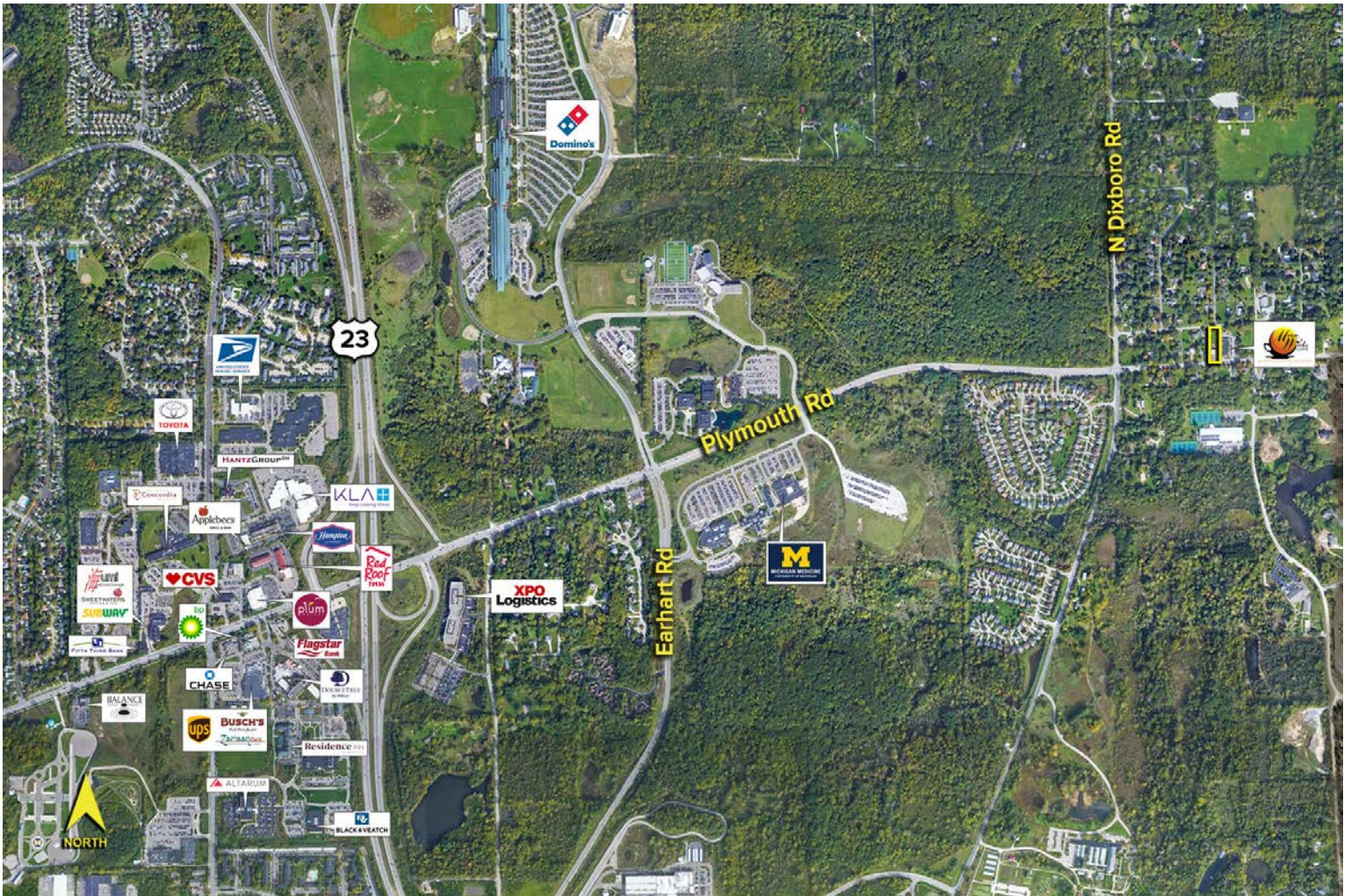


## DEMOGRAPHICS

	POPULATION	MED. HH INCOME
1 MILE	1,634	\$142,138
3 MILE	20,198	\$103,847
5 MILE	102,318	\$77,796

## TRAFFIC COUNTS (TWO-WAY)

15,696	Plymouth Rd. E. of N. Dixboro Rd.
14,398	Plymouth Rd. W. of N. Dixboro Rd.
5,606	N. Dixboro Rd. N. of Plymouth Rd.
5,901	N. Dixboro Rd. S. of Plymouth Rd.



For more information, please contact:

**MARVIN PETROUS**

(248) 359 0647

mpetrous@signatureassociates.com

**JIM MONTGOMERY**

(248) 359 0614

jmontgomery@signatureassociates.com

**SIGNATURE ASSOCIATES**

One Towne Square, Suite 1200

Southfield, MI 48076

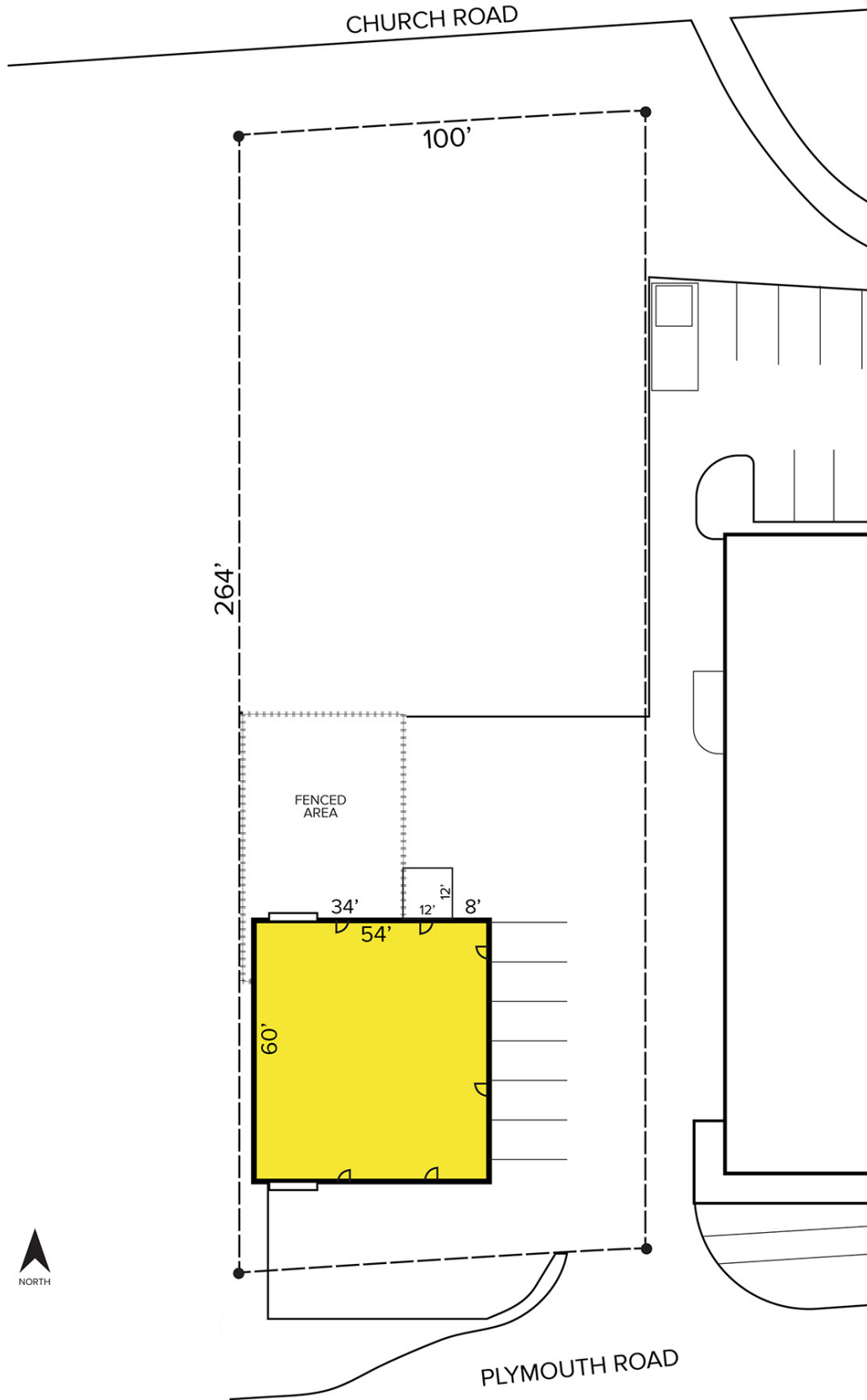
www.signatureassociates.com

# 5135 Plymouth Road— Ann Arbor, Michigan

Retail For Sale

2,081  
Square Feet  
AVAILABLE

## Site Plan



For more information, please contact:

**MARVIN PETROUS**

(248) 359 0647

[mpetrous@signatureassociates.com](mailto:mpetrous@signatureassociates.com)

**JIM MONTGOMERY**

(248) 359 0614

[jmontgomery@signatureassociates.com](mailto:jmontgomery@signatureassociates.com)

**SIGNATURE ASSOCIATES**

One Towne Square, Suite 1200

Southfield, MI 48076

[www.signatureassociates.com](http://www.signatureassociates.com)