



6.7± Acres Development Site

5325 Schillinger Rd. S
Theodore, AL 36619

Property Features

- Site Size: 6.7± AC
- Zoned: Un-zoned (county)
- Frontage: 387' on Schillinger Rd S.
- Site is cleared and ready for development
- Ideal for retail or industrial/flex development
- Close proximity to I-10
- Proximate to residential, industrial and retail
- Level topo
- Great visibility directly on Schillinger Rd
- Closest traffic count on I-10: 59,555 VPD

SALES PRICE: \$565,000.00
(\$1.94 psf)



For more information:

Pete Riehm

251.442.4349 cell • priehm@nai-mobile.com

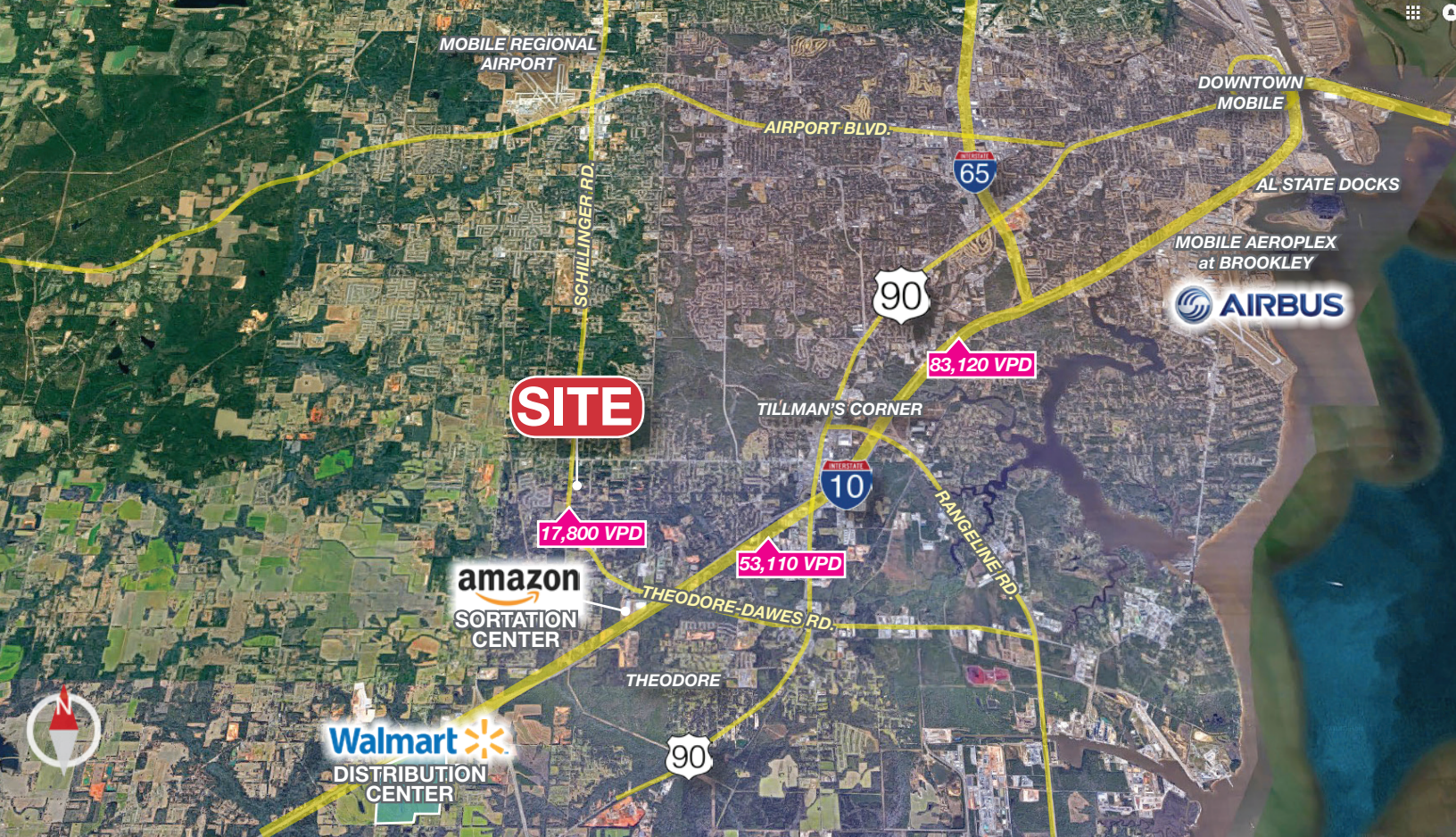
Brandon Broadus

251.288.7786 cell • bbroadus@nai-mobile.com

NO WARRANTY OR REPRESENTATION, EXPRESS OR IMPLIED, IS MADE AS TO THE ACCURACY OF THE INFORMATION CONTAINED HEREIN, AND THE SAME IS SUBMITTED SUBJECT TO ERRORS, OMISSIONS, CHANGE OF PRICE, RENTAL OR OTHER CONDITIONS, PRIOR SALE, LEASE OR FINANCING, OR WITHDRAWAL WITHOUT NOTICE, AND OF ANY SPECIAL LISTING CONDITIONS IMPOSED BY OUR PRINCIPALS. NO WARRANTIES OR REPRESENTATIONS ARE MADE AS TO THE CONDITION OF THE PROPERTY NOR ANY HAZARDS CONTAINED THEREIN ARE ANY TO BE IMPLIED.

56 St. Emanuel St.
Mobile, AL
251.438.4312

www.nai-mobile.com

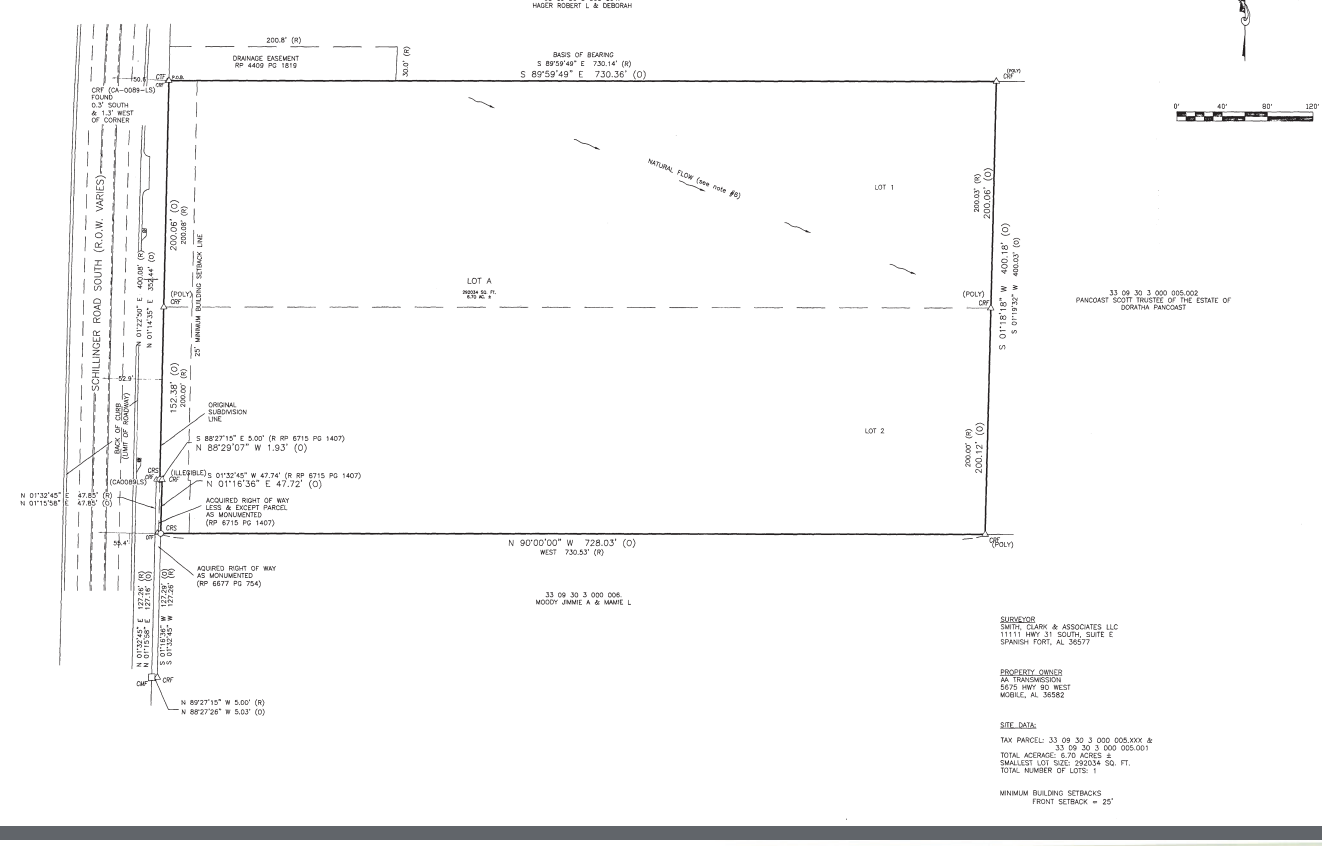


Location Description

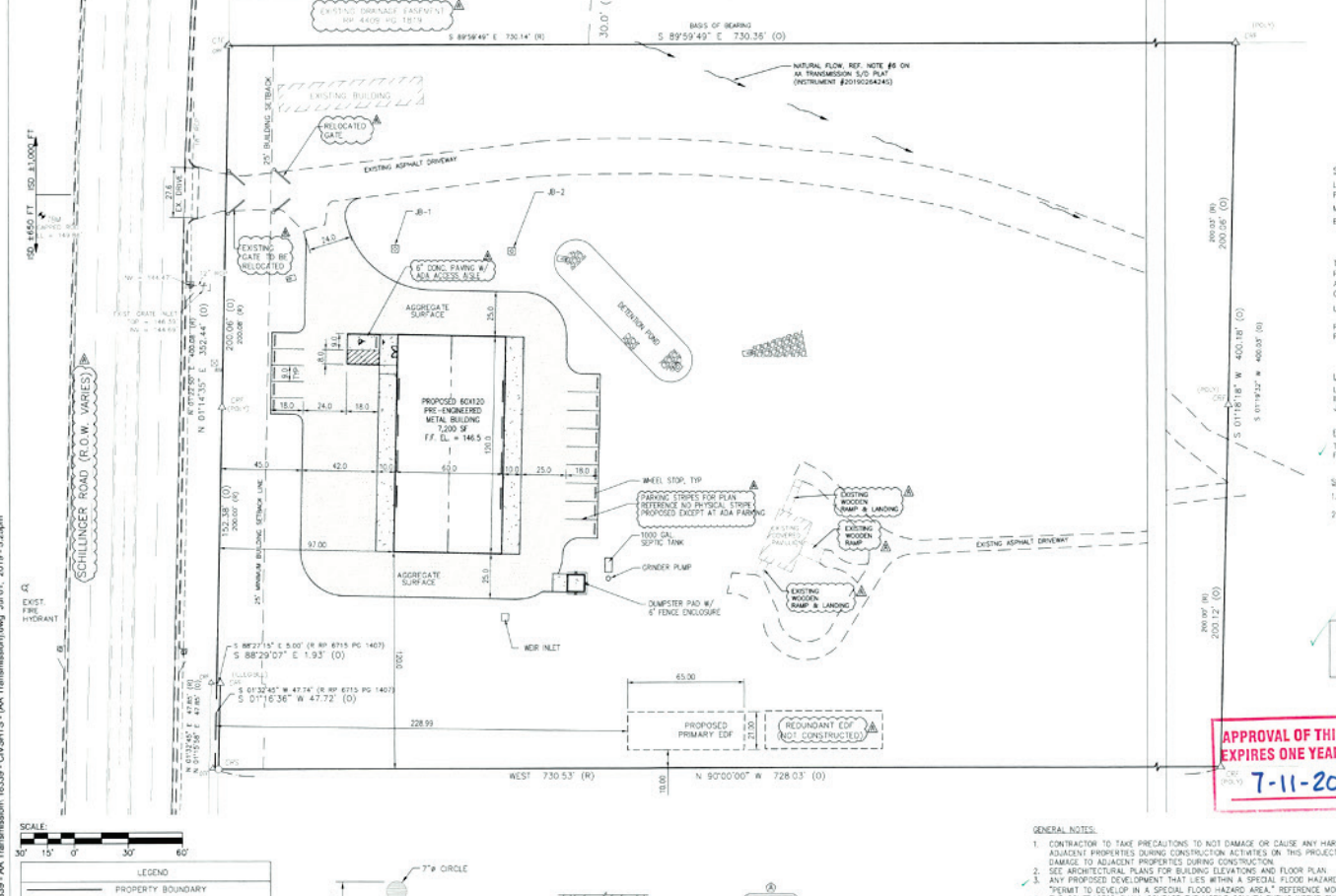
The subject property is roughly 2 miles from Interstate 10 and south of Three Notch Kroner Rd. The site fronts Schillinger Rd and is cleared, un-zoned, and an ideal site for multi-family, retail, office, and industrial. Approved site plans and survey on file.

I-10	2.1 miles
US HWY 90	4.5 miles
WalMart Distribution Center	4.8 miles
Mobile Regional Airport	7.7 miles
I-65	9.2 miles
Mobile Aeroplex at Brookley	11.6 miles
Mississippi State Line	14.1 miles
Downtown Mobile	15.7 miles
Baldwin Co., AL	24.3 miles

SURVEY



PROPOSED SITE PLAN



PROJECT: 18339-AA Transmission (dwg) Jul 01, 2019 - 5:26pm