
Greenwich, Connecticut

45 EAST PUTNAM AVENUE

NEWMARK



45 EAST PUTNAM AVENUE

Space details

Prime Location

Corner of East Putnam and Church Street

Approximate Size

Ground Floor 1,100 SF

Basement 800-1,000 SF

Rent

Upon request

Neighbors

J. McLaughlin, Love Sac, Roche Bobois, Mitchell Gold + Bob Williams, Hastens, Cocoon, Farrow & Ball, Smallbones, Whole Foods, Starbucks, and more

Highlights

- High visibility location
- Heart of Greenwich Art & Design district
- Steps from Greenwich Avenue
- Dedicated customer parking in rear
- Fully built gallery space with high ceilings
- Office, storage closet and restroom on main floor
- Additional back entrance to parking lot

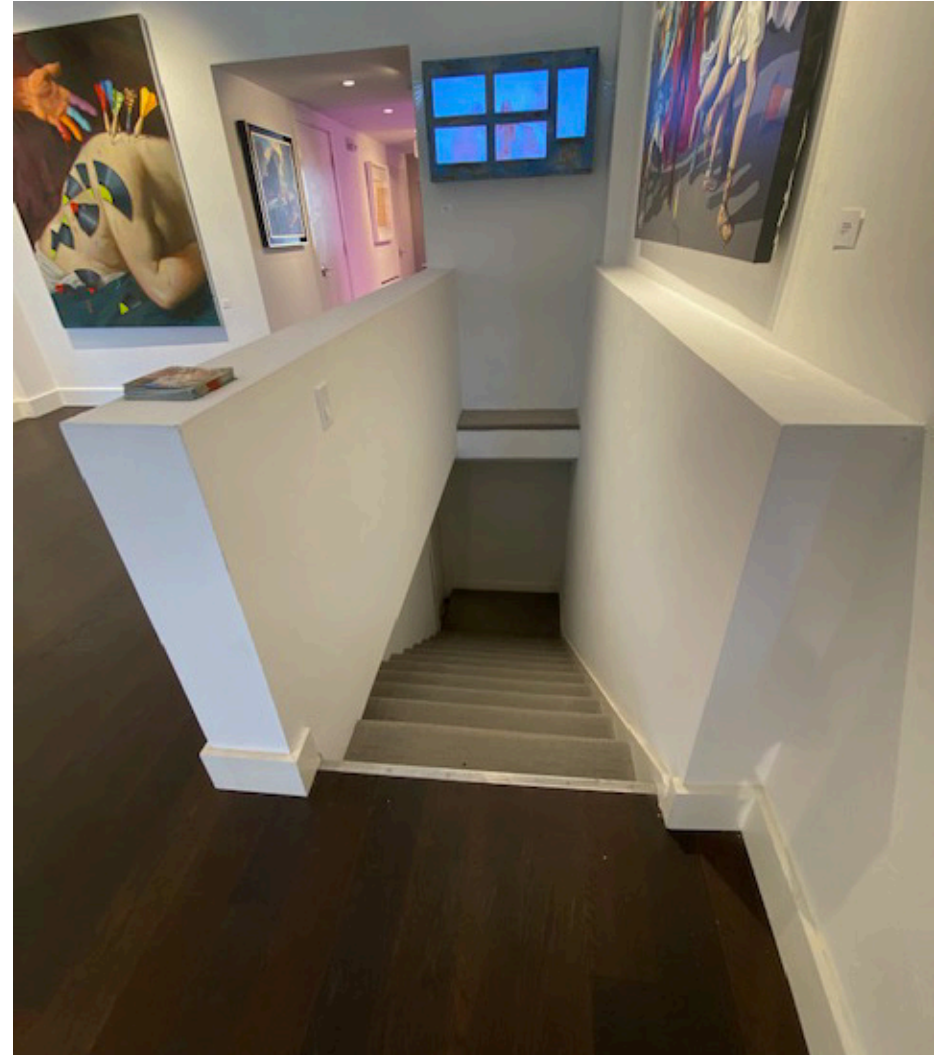


45 EAST PUTNAM AVENUE

Interior photos



VIEW FROM FRONT DOOR; 2ND DOOR IN REAR TO CUSTOMER PARKING LOT



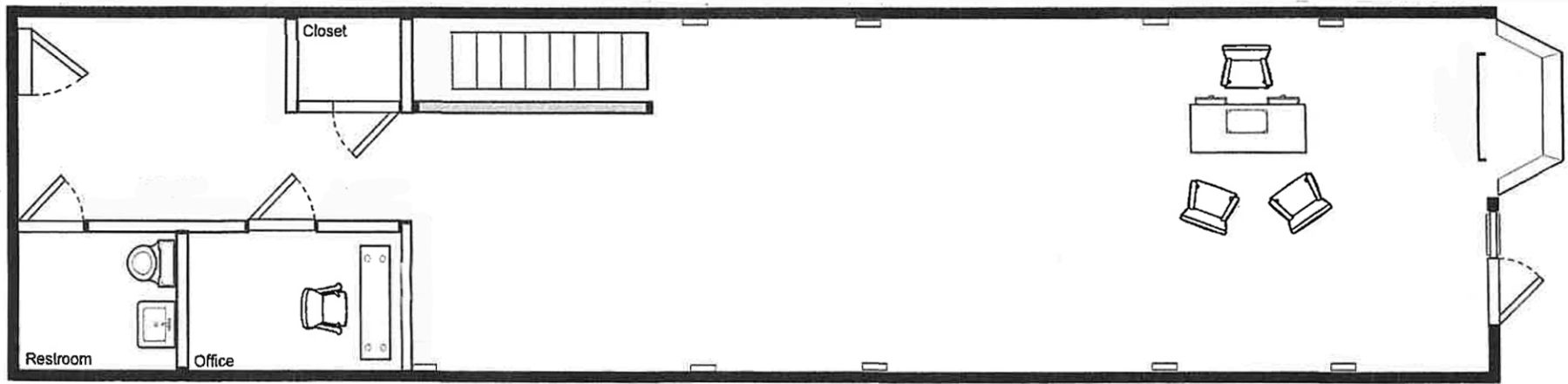
STEPS TO BASEMENT

45 EAST PUTNAM AVENUE

Floor plans

Ground Floor

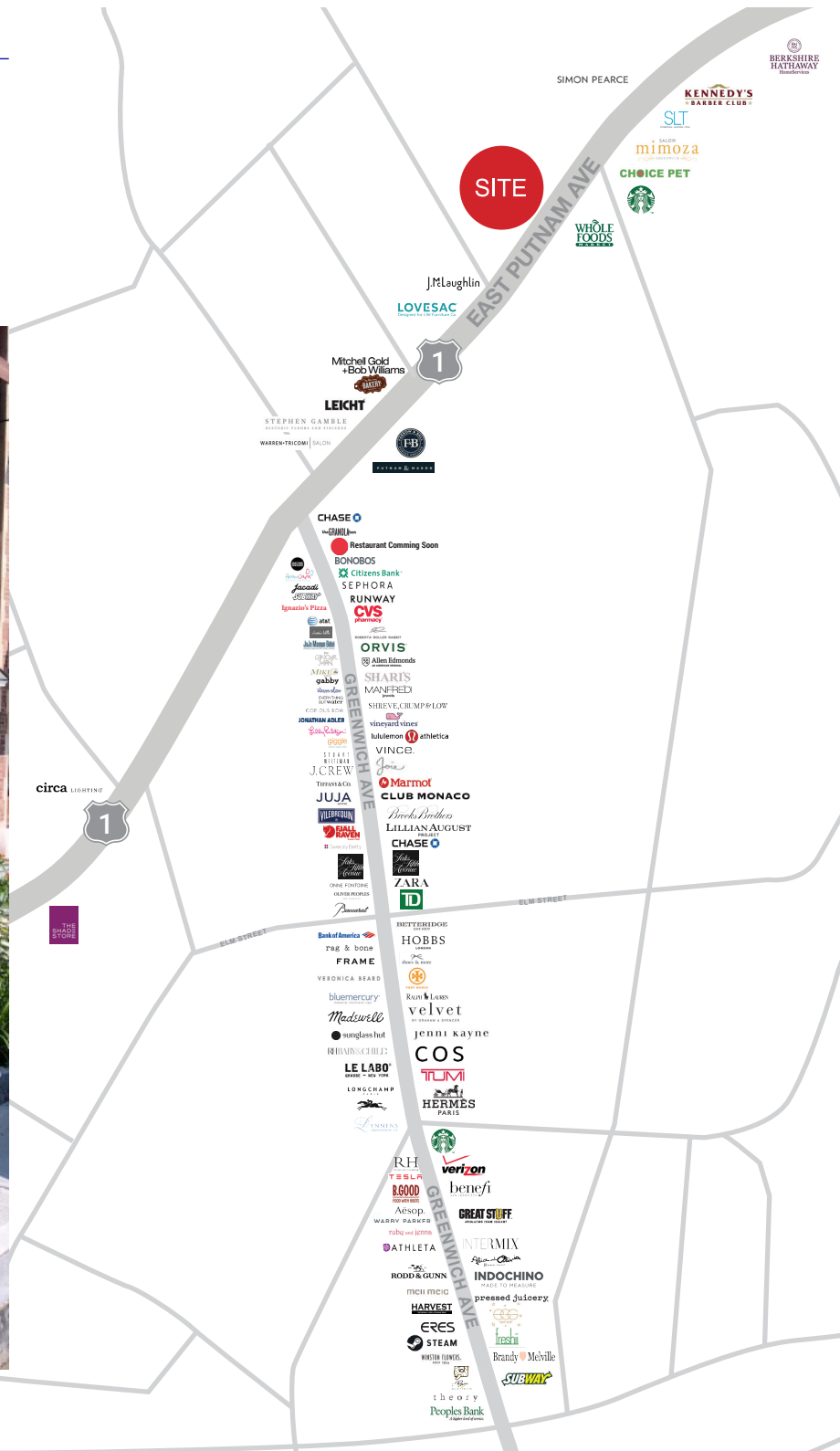
Ground Floor 1,100 SF



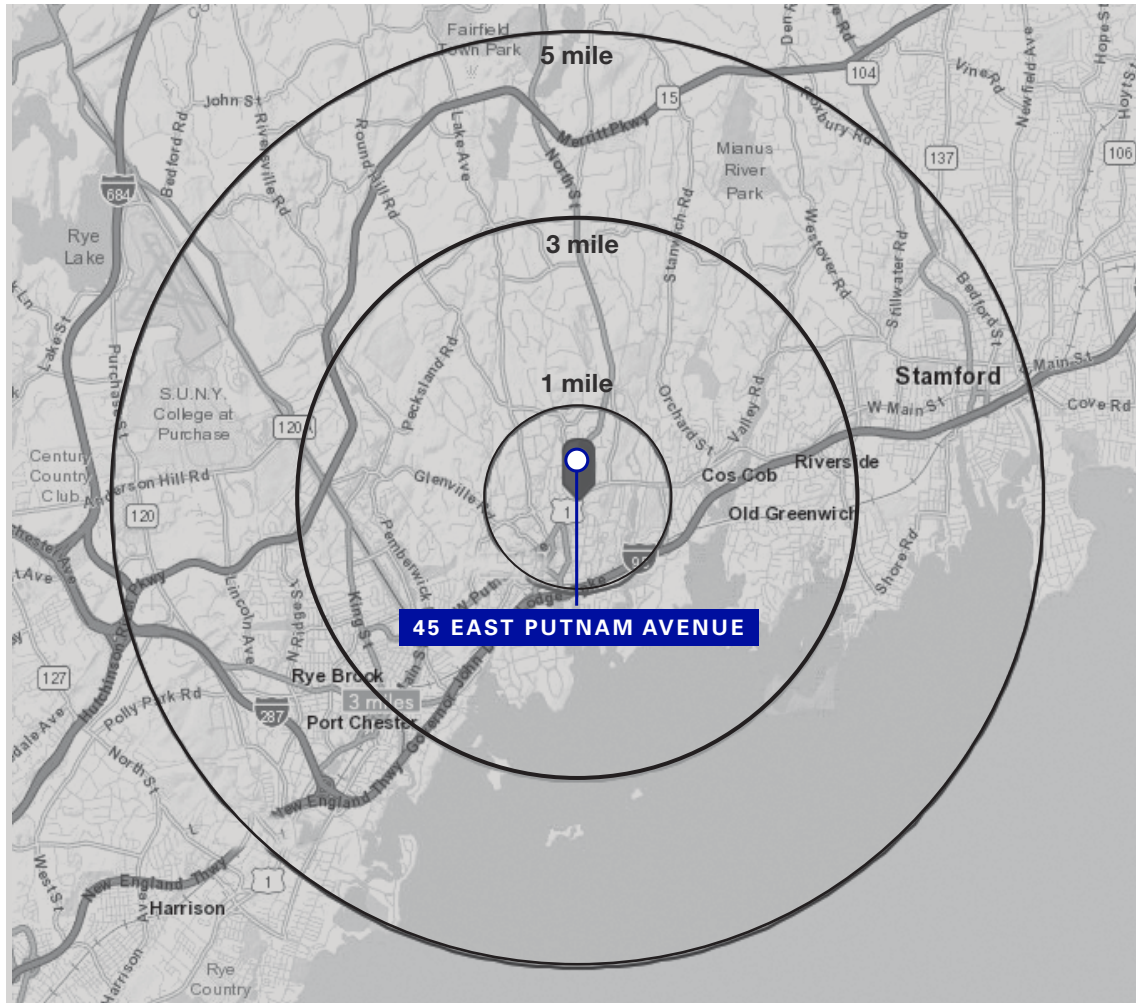
EAST PUTNAM AVENUE

45 EAST PUTNAM AVENUE

Area Map



45 EAST PUTNAM AVENUE



Total Population

1 mile	9,459
3 miles	62,560
5 miles	168,059

Estimated Daytime Population

1 mile	528,547
3 miles	941,717
5 miles	1,315,080

Average Household Income

1 mile	\$181,501
3 miles	\$189,694
5 miles	\$160,583

Total Households

1 mile	4,275
3 miles	23,371
5 miles	60,143

2019 numbers

CONTACT

Patricia A. Valenti
t 203-531-3601
pvalenti@ngkf.com

Taryn Talmadge
t 914-671-5447
taryn.talmadge@ngkf.com

NEWMARK

© 2020 NEWMARK The information contained herein has been obtained from sources deemed reliable but has not been verified and no guarantee, warranty or representation, either express or implied, is made with respect to such information. Terms of sale or lease and availability are subject to change or withdrawal without notice.

nmrk.com

NEWMARK