



11,037 SF Available

- Close access to I-95 & I-495
- Close proximity to Cabot Industrial park and Mansfield Crossing
- Household incomes: \$114,116 within 5 mile radius
- Area retailers include: Stop&Shop, Shaw's, Staples, Home Depot, CVS, Best Buy & L.L.Bean

2020 DEMOGRAPHICS	1 MILE	3 MILE	5 MILE
Population	6,417	30,932	73,921
Med HH Income	\$88,007	\$109,400	\$114,116

Jim Bagley

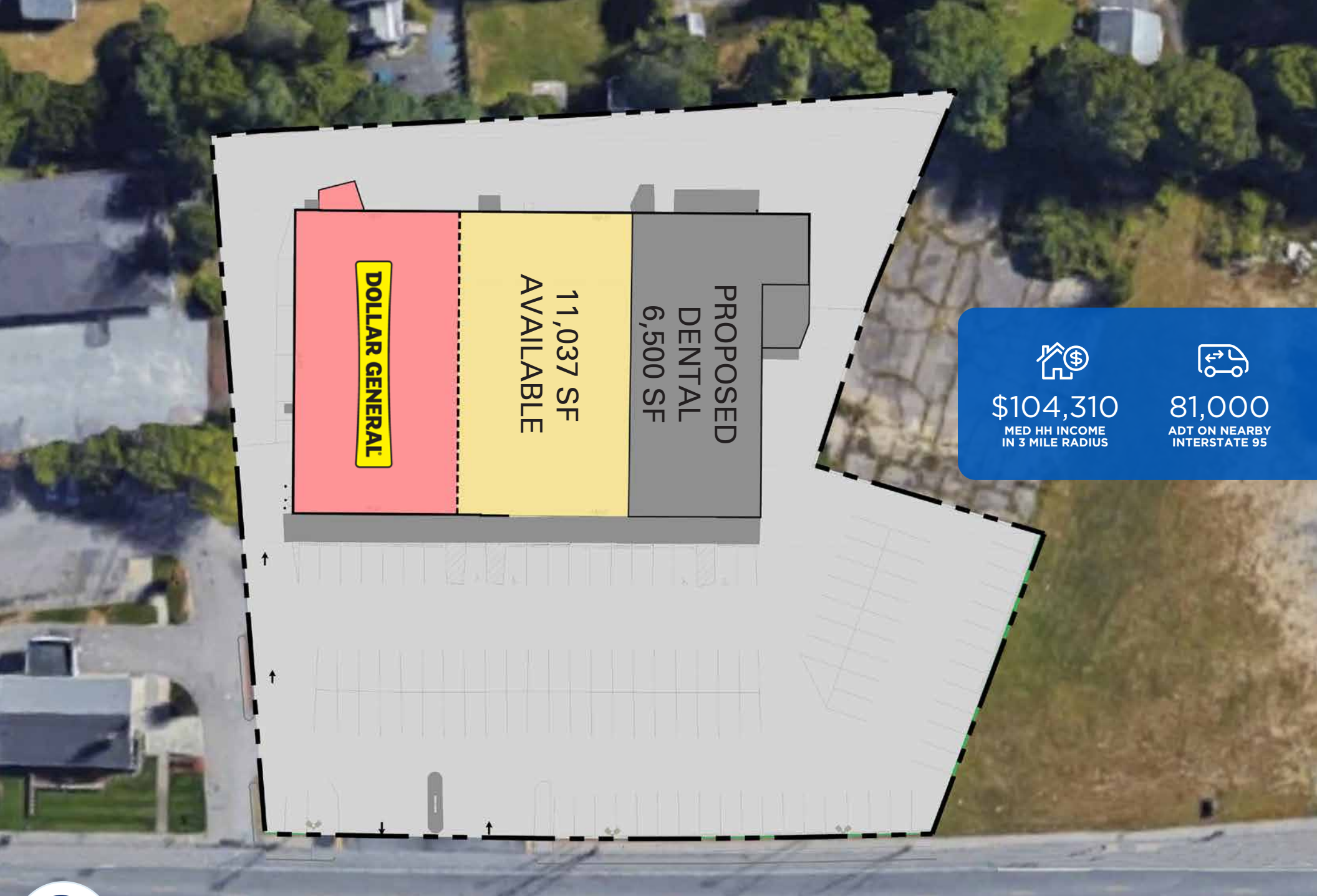
617.239.3642

jbagley@atlanticretail.com

Rachael Willard

617.239.3603

rwillard@atlanticretail.com




DOLLAR GENERAL

11,037 SF
AVAILABLE

PROPOSED
DENTAL
6,500 SF


\$104,310
 MED HH INCOME
 IN 3 MILE RADIUS


81,000
 ADT ON NEARBY
 INTERSTATE 95



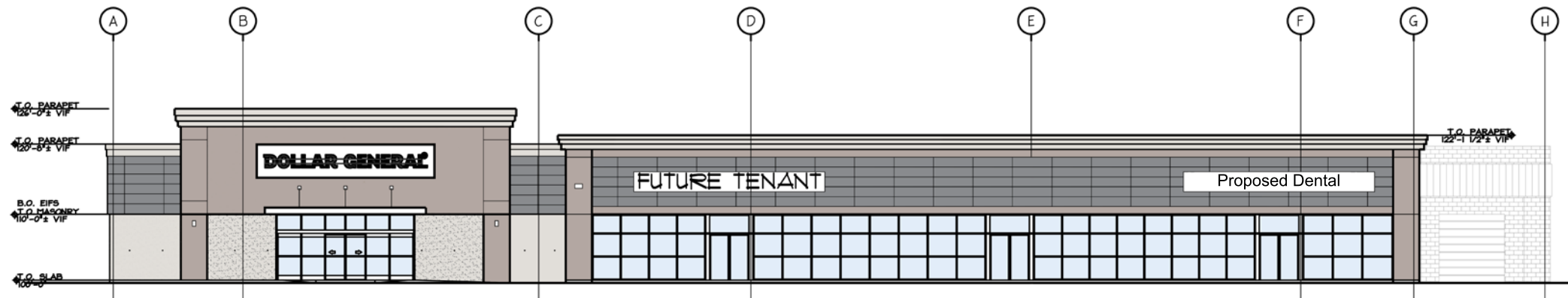
MANSFIELD, MA
65 Copeland Drive

Jim Bagley
617.239.3642
jbagley@atlanticretail.com

Rachael Willard
617.239.3603
rwillard@atlanticretail.com

ATLANTICRETAIL.COM

DOLLAR GENERAL
MANSFIELD, MA



MANSFIELD, MA
65 Copeland Drive

RENDERING

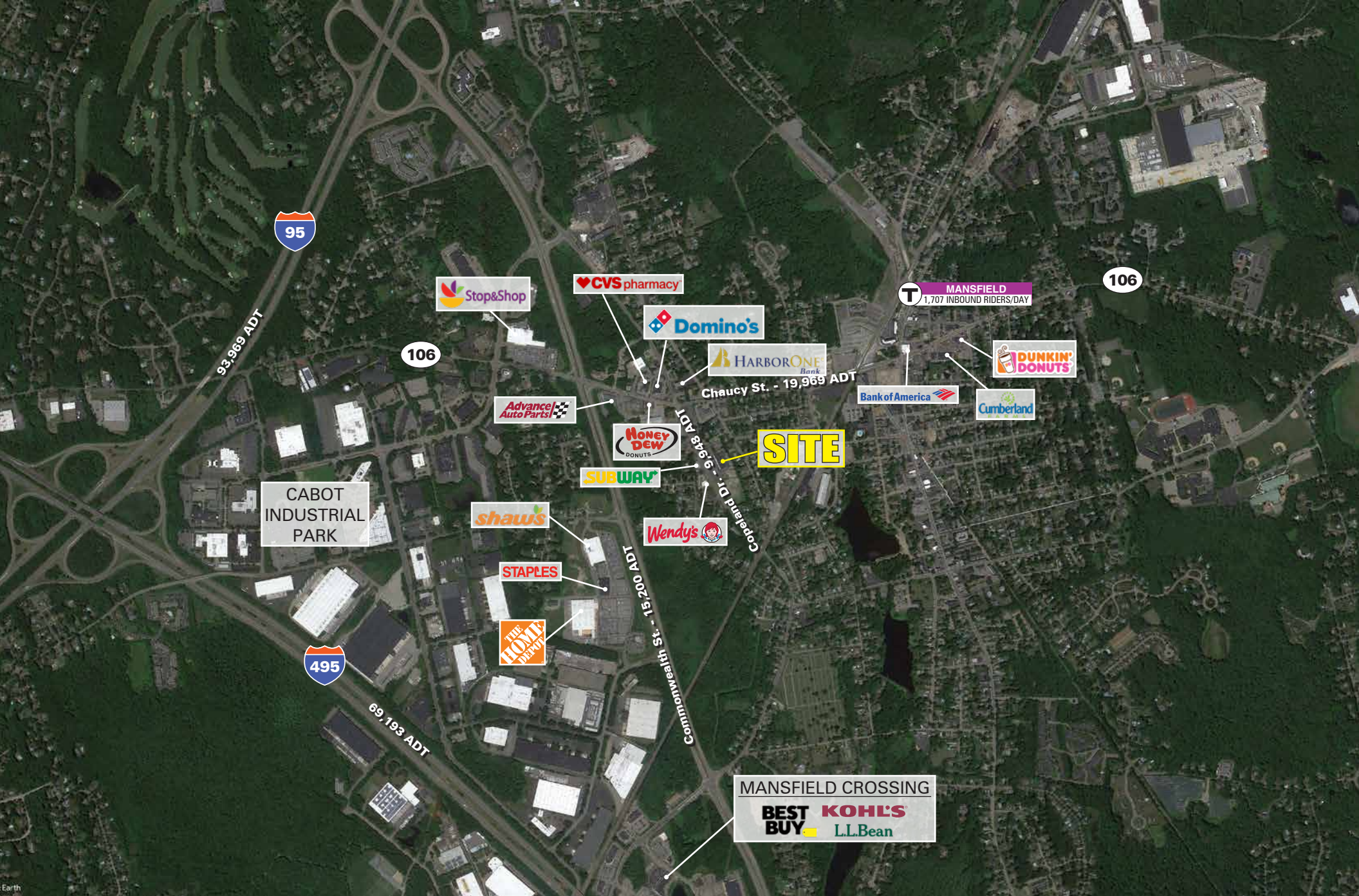
Jim Bagley

617.239.3642
jbagley@atlanticretail.com

Rachael Willard

617.239.3603
rwillard@atlanticretail.com

ATLANTICRETAIL.COM



MANSFIELD, MA
 65 Copeland Drive

MARKET AERIAL

Jim Bagley

617.239.3642
 jbagley@atlanticretail.com

Rachael Willard

617.239.3603
 rwillard@atlanticretail.com

ATLANTICRETAIL.COM