

UNION
SQUARE

NEW YORK
NY

110 EAST 13TH STREET



SPACE DETAILS

LOCATION

South block between Third and Fourth Avenues

APPROXIMATE SIZE

Ground Floor	3,600 SF
Basement	2,000 SF
Total	5,600 SF

FRONTAGE

34 FT on East 13th Street

TERM

Long term

POSSESSION

Arranged

SITE STATUS

Currently INA

NEIGHBORS

Regal Union Square Stadium 14, Best Buy, Bluemercury, Cava, Liquiteria, Nordstrom Rack, Crunch, Trader Joe's, Feast, Dos Toros Taqueria, Glaze Teriyaki and Hyatt Hotel

COMMENTS

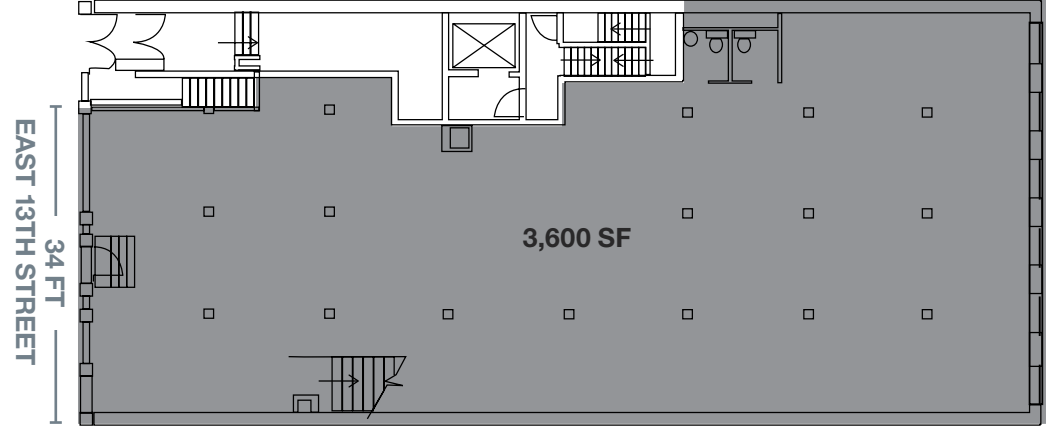
Surrounded by several NYU dorms

Steps from **N** **Q** **R** **4** **5** **6** **L** subway lines

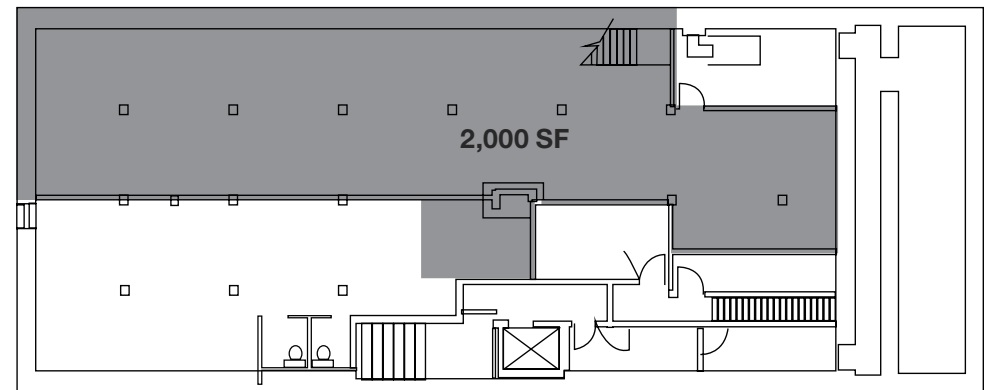
All uses considered

In close proximity to Union Square

GROUND FLOOR



LOWER LEVEL



AREA RETAIL



⊕ COMING SOON

CONTACT EXCLUSIVE AGENTS

HARRISON ABRAMOWITZ
212.372.2467
habramowitz@ngkf.com

GARY ALTERMAN
212.916.3367
galterman@rnf.com