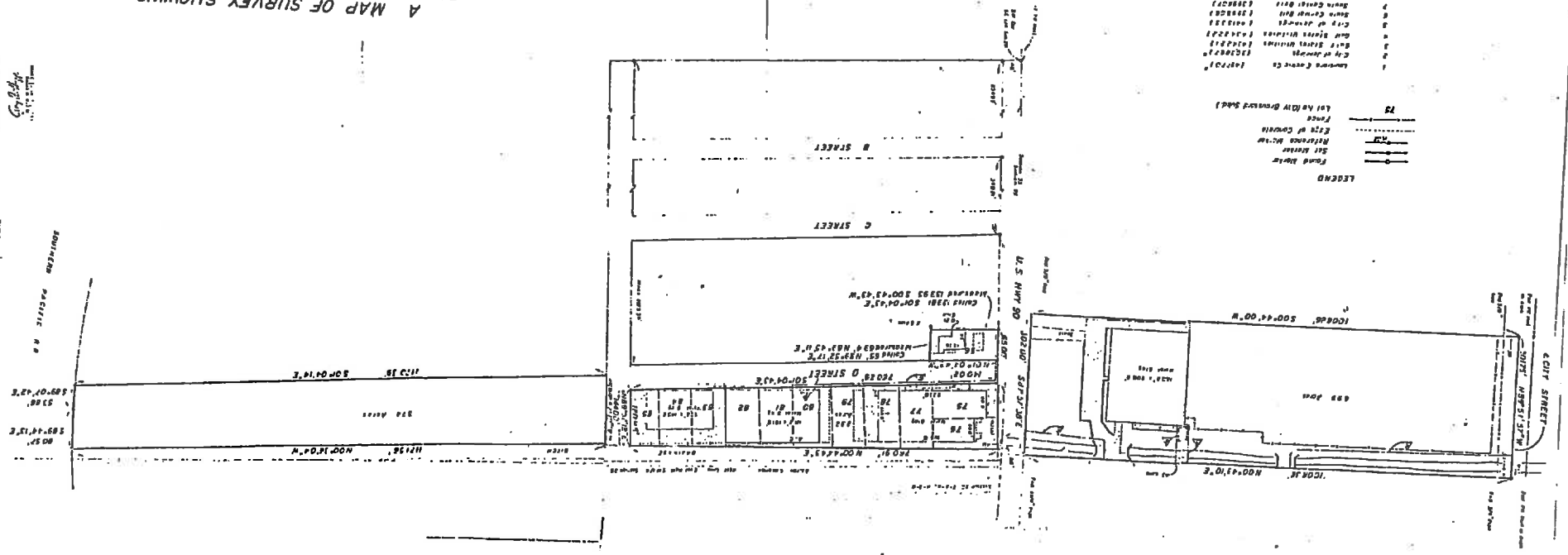


A MAP OF SURVEY SHOWING
 PROPERTY AND IMPROVEMENTS
 OF
 FOLEY VALVE CORP
 LOCATED IN
 SECTIONS 28 & 33, T-9-S, R-3-W
 CITY OF JENNINGS
 JEFFERSON DAVIS PARISH, LOUISIANA

RECORDED IN PLAT
 102-5-1-2-33
 102-5-1-2-33
 102-5-1-2-33



#462992

Geo. Berglund