

FOR LEASE

MEDICAL OFFICE BUILDING



1430 MICHIGAN ST. NE

GRAND RAPIDS, MI 49503

PROPERTY OVERVIEW

Join other physicians on the Medical Mile in Grand Rapids! A nice small medical suite is rarely found on this prime medical corridor. This medical office suite includes four exam rooms, two offices, a break room, storage, and reception/waiting area. The suite could also easily be converted into general office space located right off the I-196 interchange. Great visibility and signage on Michigan Street are distinctions!

OFFERING SUMMARY

Lease Rate: \$12.00 SF/yr (MG)
Available SF: 1,660 SF
Year Built: 1969
Building Size: 3,593 SF
Zoning: Commercial Improved

AVAILABLE SPACES

SPACE	LEASE RATE	SIZE (SF)
A	\$12.00 SF/yr	1,660 SF

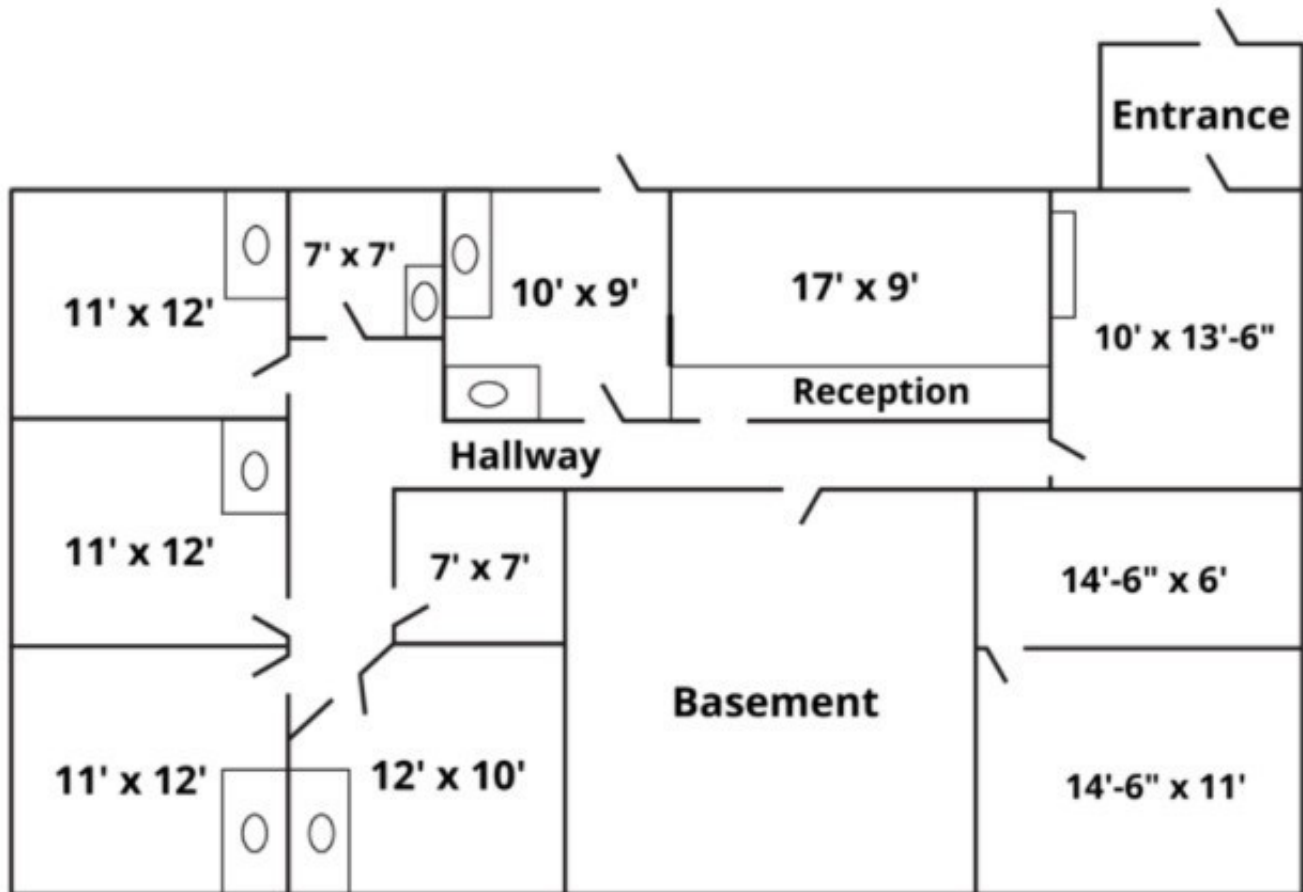


JEFF TUCKER
Senior Managing Director, Brokerage | Principal
616.881.9321
jtucker@bradleyco.com

ED MYERS, CCIM
Associate Broker, Office & Healthcare Specialist
616.822.9648
emyers@bradleyco.com

FLOOR PLAN

1430 MICHIGAN ST. NE | FOR LEASE



1430 MICHIGAN ST. NE | FOR LEASE

