

1804 ULIT AVENUE

Austin, TX 78702

TOWER
commercial

CORPORATE REAL ESTATE ADVISORS



- \$1,400,000
- 2,788 SF
- 6 parking spaces, plus street parking
- Central Eastside location
- 5 minutes to downtown
- 1 block to Cap Metro Station
- Neighborhood dining & entertainment options
- Classic remodeled office space
- Rezoning Pending

DOUG MCGREGOR (512) 497-0057
mcgregor@toweratx.com

5900 Southwest Pkwy | Suite 5-520 | Austin, TX
78735 512.582.0150 | www.toweratx.com

Information contained herein is deemed reliable but not guaranteed and should be independently verified; Broker assumes no responsibility for the accuracy thereof. Offering made subject to errors, omissions, change, sale or withdrawal without notice. Property is offered without regard to race, creed, nationality, disability or gender.

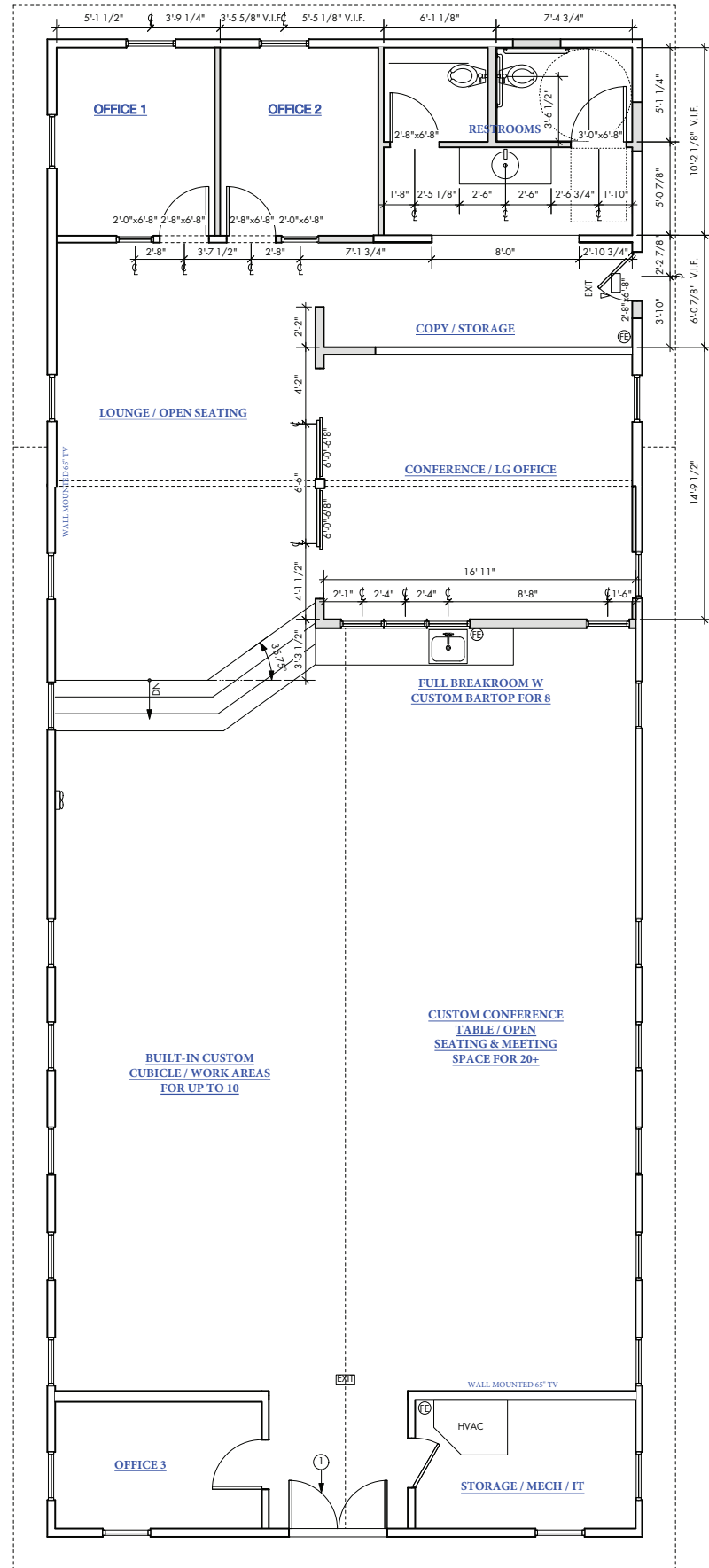
EXCLUSIONS FOR USE

per Neighborhood Plan notice

June 29, 2020

- Communications services
- Medical offices
- Club or lodge
- Community events
- Convalescent services
- Hospital services
- Off-site accessory parking
- Personal services
- Communication services facility
- Congregate living
- Counseling services
- Residential treatment

1804 ULIT
As Built Drawing
1/4" = 1'-0"
*verify all dimensions in field as they may
have adjusted during construction



DOUG MCGREGOR (512) 497-0057
mcgregor@toweratx.com

5900 Southwest Pkwy | Suite 5-520 | Austin, TX
78735 512.582.0150 | www.toweratx.com

Information contained herein is deemed reliable but not guaranteed and should be independently verified; Broker assumes no responsibility for the accuracy thereof. Offering made subject to errors, omissions, change, sale or withdrawal without notice. Property is offered without regard to race, creed, nationality, disability or gender.