

115

INVERNESS

east

ENGLEWOOD, CO 80011e



connect & convene @ 115

CONNECT

115 inverness drive east



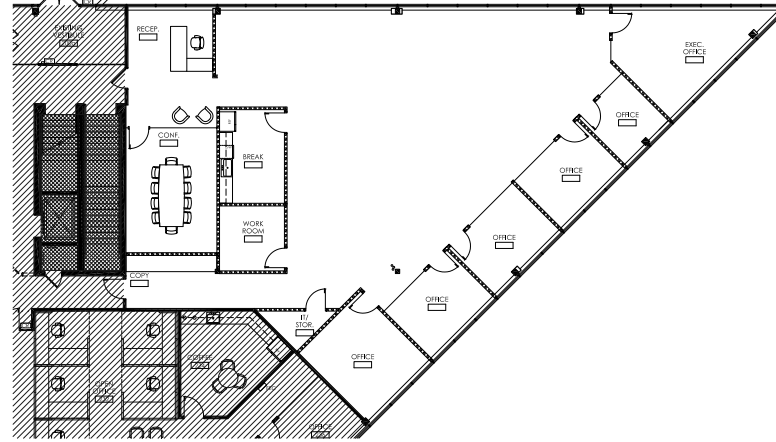
- open ceiling spec suites planned
- updated restrooms throughout
- 2 outdoor patios overlooking adjacent reflection pool
- common area wifi
- monument signage available
- 3 : 1,000 surface parking ratio
- back-up generator available for tenant use

AVAILABILITIES

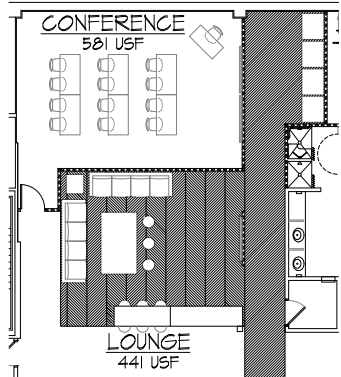
115 inverness drive east

SUITE 250

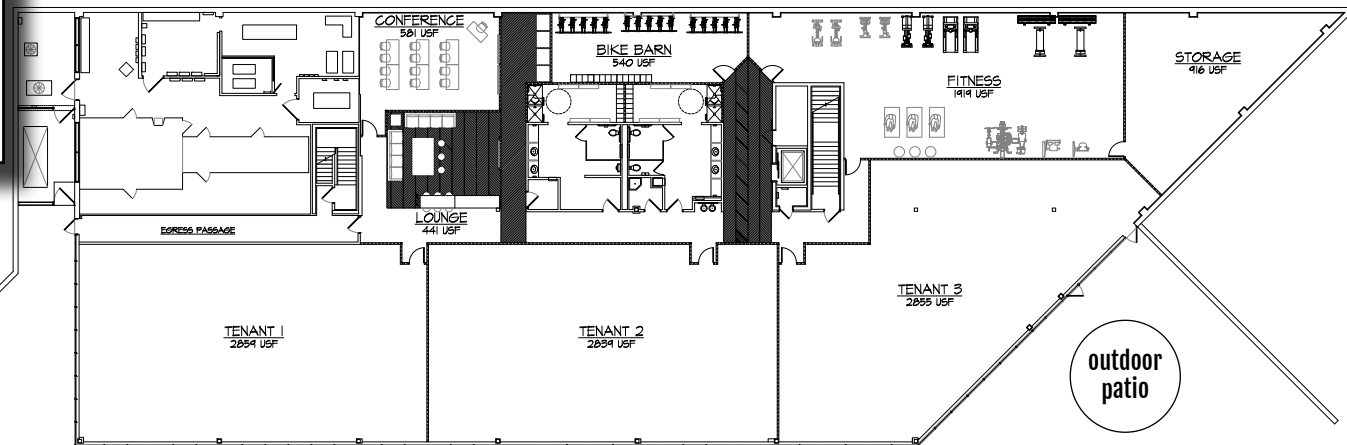
hypothetical spec plan 4,539 RSF



hypothetical building conference room and tenant lounge



GARDEN LEVEL hypothetical amenities plan



outdoor patio

outdoor patio

convene

115 inverness drive east

off the dry creek light rail station, near park meadows



6 min drive to CAC inverness



run 1.41-mile inverness drive loop



near 18-hole pga championship course



5 min drive to hilton denver inverness



3 min walk to marco's coal fired pizzeria

CONTACT

whitney hake
senior vice president
303.407.1465

whitney.hake@transwestern.com

billy woodward
vice president
303.952.5591

billy.woodward@transwestern.com

 **TRANSWESTERN**[®]