

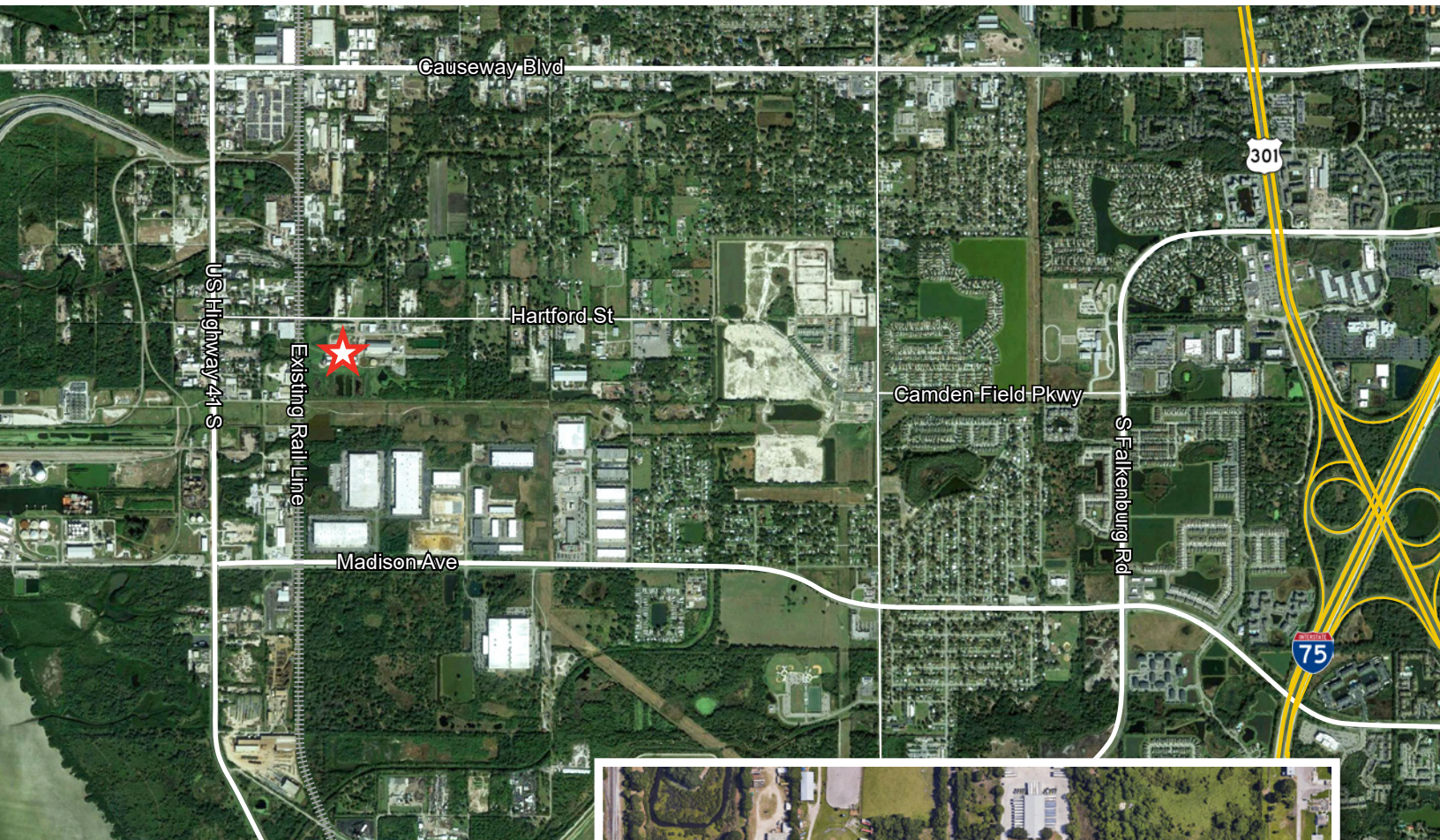
Property Highlights

FOR LEASE

- Availabilities:
 - Building 1: 61,418 sf
 - Building 2: 18,929 sf
 - Building 3: 13,692 sf
- Grade and dock high loading
- 16' to 50' clear height
- Rail served
- Ample outside storage available
- Buildings currently being completely refurbished

Trey Carswell, SIOR
Principal
813.444.0627
trey.carswell@avisonyoung.com

Lisa Ross, SIOR
Principal
813.314.7798
lisa.ross@avisonyoung.com



Prime Location

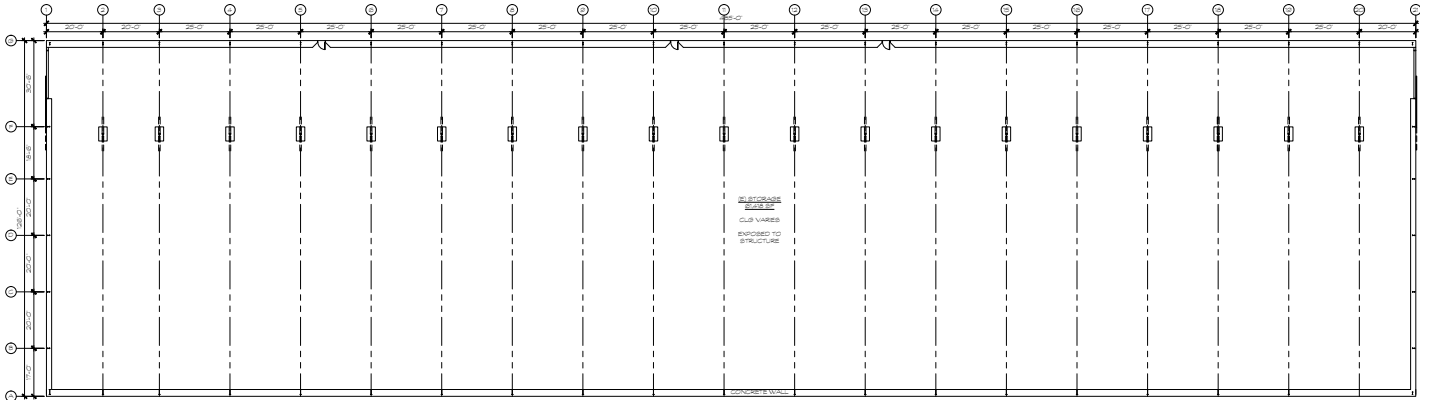
- East Side Industrial Submarket
- Less than 1/2 mile east of US 41 and 3/4 of a mile north of Madison Avenue
- 2.5 miles to the Port of Tampa
- Located within minutes to I-4 / I-75 and the Selmon Expressway



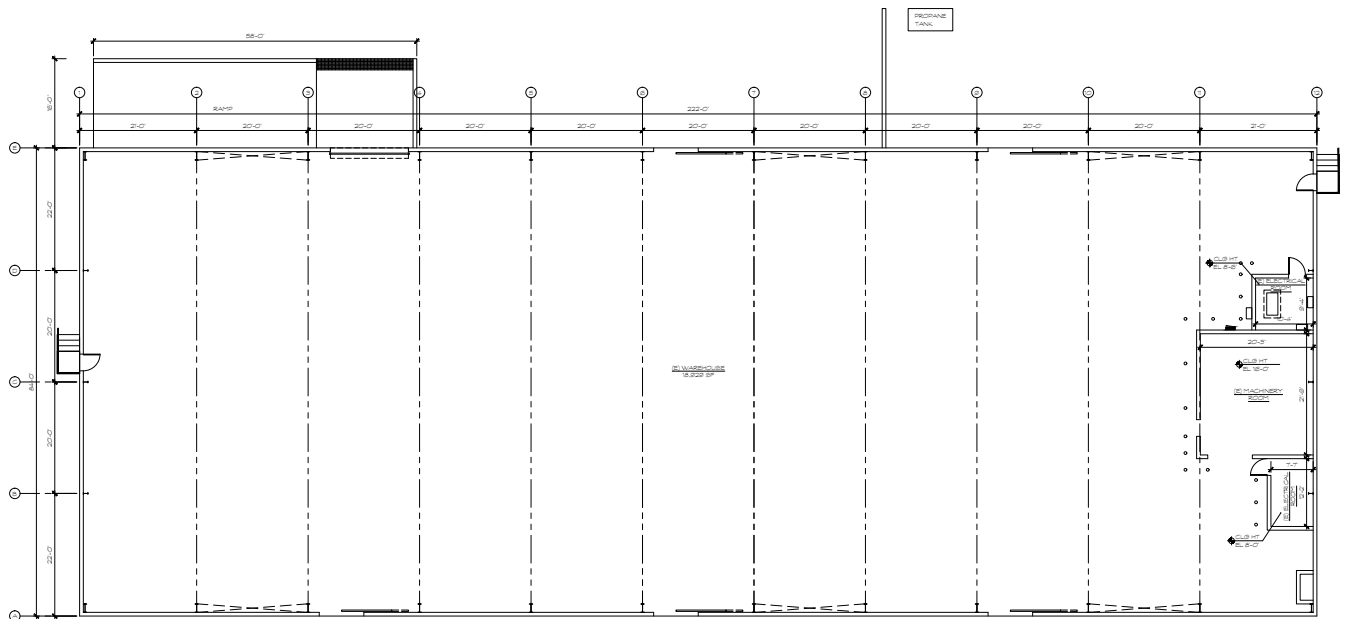
Trey Carswell, SIOR
Principal
813.444.0627
trey.carswell@avisonyoung.com

Lisa Ross, SIOR
Principal
813.314.7798
lisa.ross@avisonyoung.com

BUILDING 1
61,418 SF



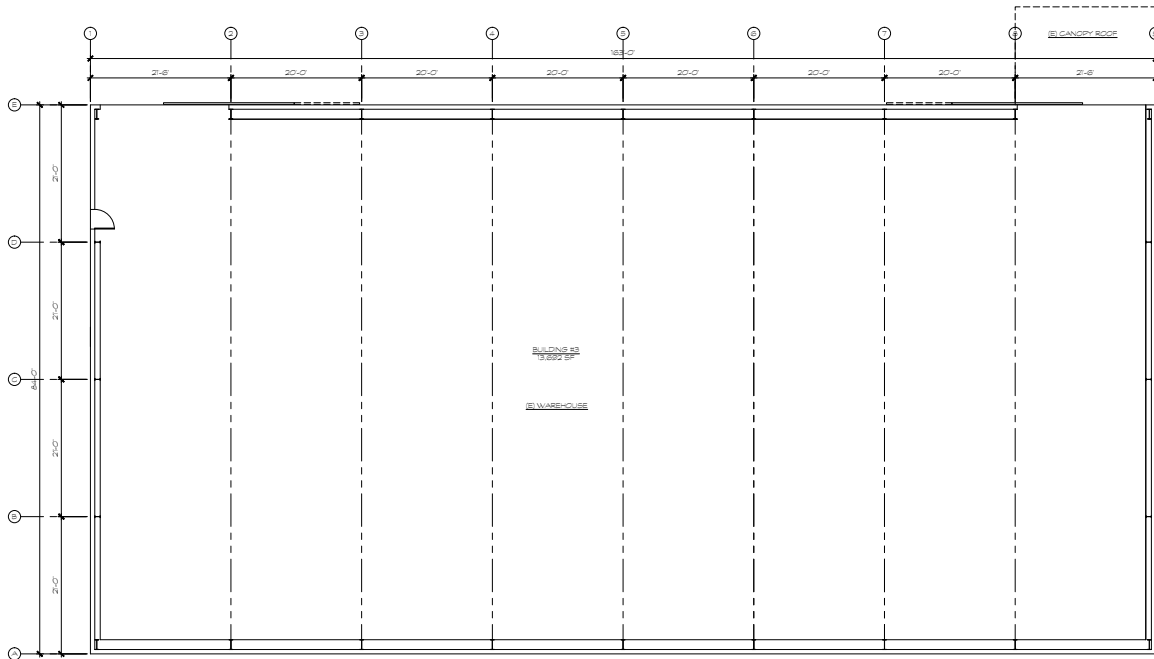
BUILDING 2
18,929 SF



Trey Carswell, SIOR
Principal
813.444.0627
trey.carswell@avisonyoung.com

Lisa Ross, SIOR
Principal
813.314.7798
lisa.ross@avisonyoung.com

BUILDING 3
13,692 SF



Trey Carswell, SIOR
Principal
813.444.0627
trey.carswell@avisonyoung.com

Lisa Ross, SIOR
Principal
813.314.7798
lisa.ross@avisonyoung.com