



# 225 DISTRIBUTION CENTER

11.82 Acres for Build-to-Suit  
Port of Houston - Pasadena, Texas

11.82 Acres

Up to 147,250 SF Available

Strategic Port Location with Direct  
Access to Highway 225

Excellent Site for Container or  
Trucking Yard

Proposed Building Specs

- Front Load Distribution Center
- Dock High with Ramps
- One Acre of Outside Yard
- ESRF Sprinkler System
- 32' Clear Height

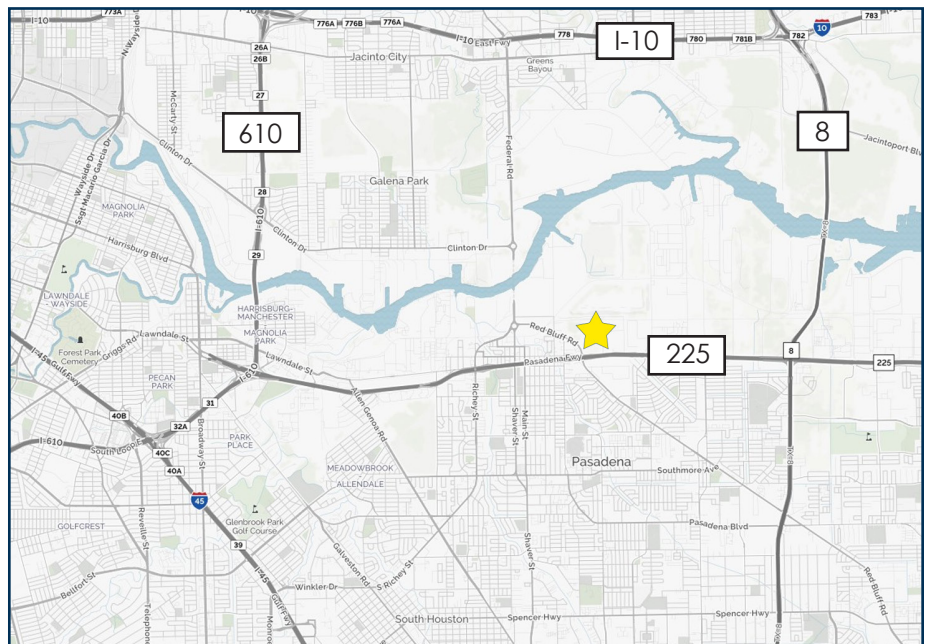


Aerial

**FOR MORE  
INFORMATION  
PLEASE CONTACT:**

**Jason Dillee**  
**CUSHMAN & WAKEFIELD**  
*Senior Director*  
713.345.1432  
jason.dillee@cushwake.com

**Nathan Wynne**  
**CUSHMAN & WAKEFIELD**  
*Director*  
713.705.8088  
nathan.wynne@cushwake.com



Site Location

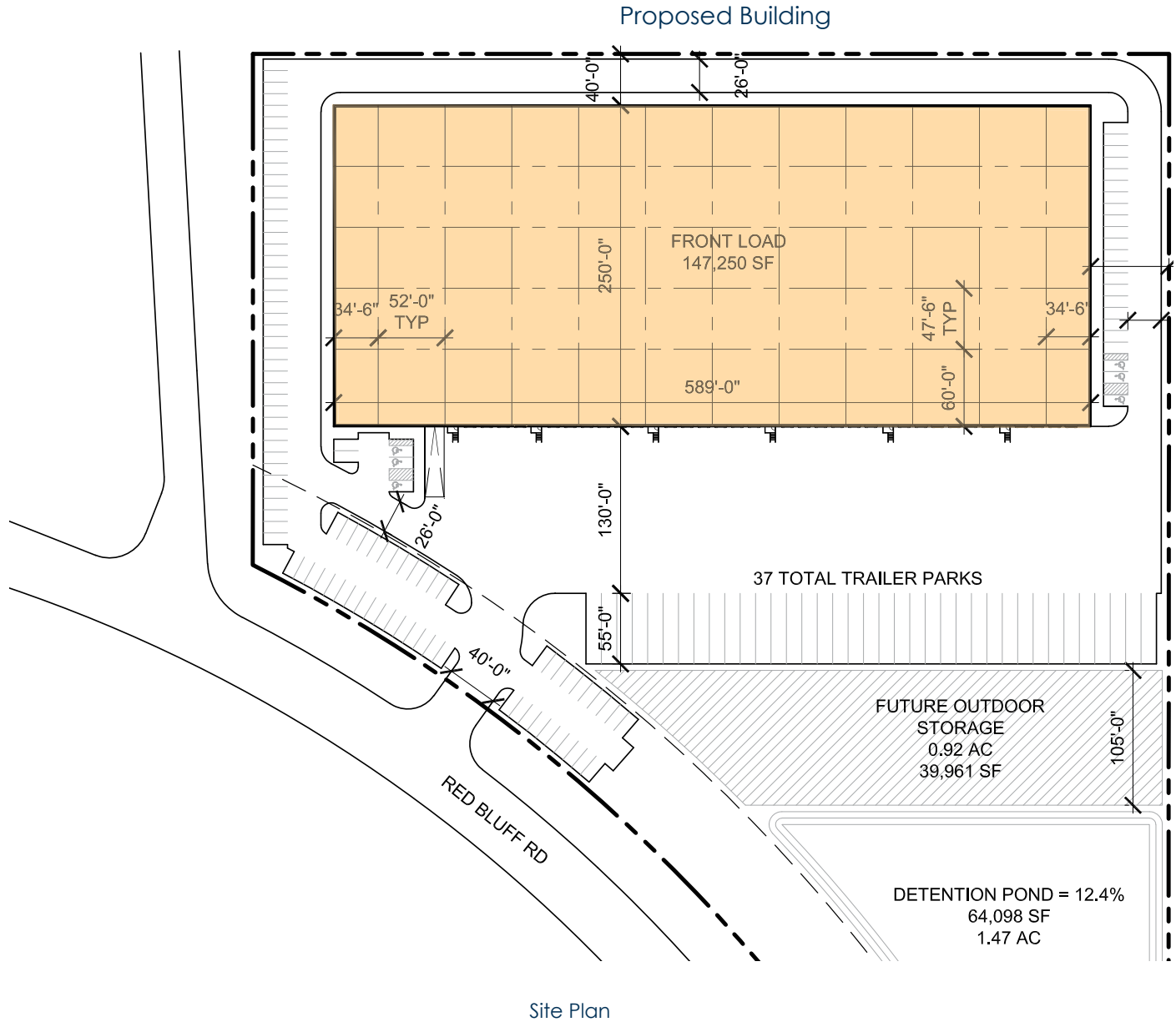
©2017 AVERA Companies. This information has been obtained from sources believed reliable. We have not verified it and make no guarantee, warranty, or representation about it. Any projections, opinions, assumptions, or estimates used are for example only and do not represent the current or future performance of the property. You and your advisors should conduct a careful, independent investigation of the property to determine to your satisfaction the suitability of the property for your needs.





# 225 DISTRIBUTION CENTER

Port of Houston - Pasadena, Texas



**FOR MORE  
INFORMATION  
PLEASE CONTACT:**

**Jason Dillee**  
**CUSHMAN & WAKEFIELD**  
*Senior Director*  
713.345.1432  
jason.dillee@cushwake.com

**Nathan Wynne**  
**CUSHMAN & WAKEFIELD**  
*Director*  
713.705.8088  
nathan.wynne@cushwake.com

©2017 AVERA Companies. This information has been obtained from sources believed reliable. We have not verified it and make no guarantee, warranty, or representation about it. Any projections, opinions, assumptions, or estimates used are for example only and do not represent the current or future performance of the property. You and your advisors should conduct a careful, independent investigation of the property to determine to your satisfaction the suitability of the property for your needs.

