

1061 ATLANTIC AVENUE

BEDFORD - STUYVESANT, BROOKLYN



RETAIL SPACE
FOR LEASE

BED-STUY BROOKLYN

1061 ATLANTIC AVENUE

SPACE HIGHLIGHTS

LOCATION

Between Franklin Ave
& Classon Ave

SPACE

12,000 SF

CEILING HEIGHT

20 FT

FRONTAGE

70 FT

DIMENSION

70 FT x 110 FT

ZONING

M1-1

OCCUPANCY

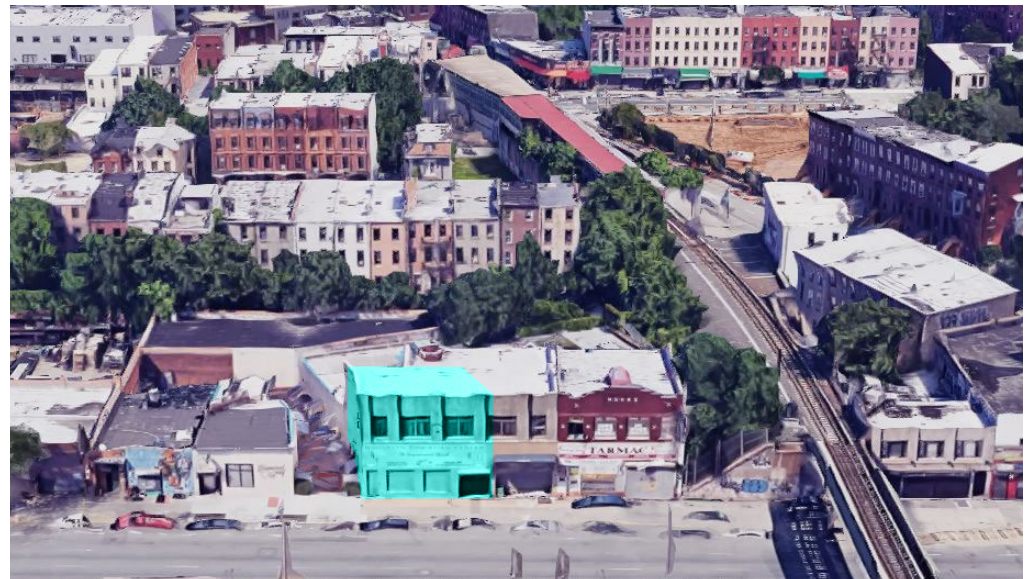
Immediate

ASKING RENT

Upon Request

HIGHLIGHTS

- Conveniently and centrally located in between the boroughs most bustling neighborhoods, Crown Heights, Prospect Heights, Bed-Stuy and Clinton Hill.
- Close proximity to Barclays Center and Atlantic Ave transportation hub.
- Tidal wave of New Development in the area.
- Multitude of possibilities with Location.



BED-STUY BROOKLYN

1061 ATLANTIC AVENUE

EXISTING CONDITION



BED-STUY BROOKLYN

EXISTING CONDITION

1061 ATLANTIC AVENUE



NEIGHBORHOOD DEMOGRAPHICS



189,112

POPULATION
WITHIN 1-MILE
RADIUS



36 Years

AVERAGE
POPULATION
AGE



12.66%

POPULATION
GROWTH
SINCE 2010



\$90,279

AVERAGE
HOUSEHOLD
INCOME



4,693

TOTAL BUSINESSES
WITHIN 1-MILE
RADIUS



\$1.8 bn

AVERAGE HOUSEHOLD
EXPENDITURE

BED-STUY BROOKLYN

1061 ATLANTIC AVENUE

NEIGHBORHOOD & TRANSPORTATION

NEIGHBORHOOD TENANTS

Diamond Reef
Friends and Lovers
Doris
Pacific BK
Bad Seed Brooklyn
Crossfit Kingsboro
United States Postal Service
BERG'N
Sushi Tatsu
Planet Fitness
Dunkin' Donuts
Popeyes Louisiana Kitchen
Corner Grind Coffee Kitchen
Sweet Cindy Creations
Fulton Bagel House
Golda
Calaca
Glorietta Baldy
Pasha Pizza
Hart's
Shop Fair Supermarkets
Alex's Trendy Australian Cafe
Langston Night Club
The Crabby Shack
Neptune Diner II
BP
Mobil

TRANSPORTATION

3 Min Walk at Franklin Avenue
7 Min Walk at Nostrand Avenue



BED-STUY BROOKLYN

1061 ATLANTIC AVENUE

CONTACT



DAVID DUBINSKY
718.308.7111
 david.d@exrny.com

IMAC POSNER
516.313.9008
 mac@exrny.com

