

# ANTHEM CORPORATE

3715-3719 W ANTHEM WAY, ANTHEM, AZ

## OFFICE & MEDICAL SPACE AVAILABLE

PLEASE CONTACT YOUR EXCLUSIVE ADVISORS FOR MORE INFORMATION

KATHLEEN MORGAN ♦ Managing Director ♦ 602.952.3815 ♦ kmorgan@ngkf.com

TRISHA TALBOT ♦ Managing Director ♦ 602.952.3880 ♦ ttalbot@ngkf.com



**Newmark  
Knight Frank**

# ANTHEM CORPORATE

3715 W ANTHEM WAY, ANTHEM, AZ

## PROPERTY DETAILS



±43,447 SF  
AVAILABLE



\$25.00  
FULL SERVICE



2008  
YEAR BUILT



4.40:1,000/SF  
PARKING RATIO



3% ANNUAL  
INCREASES



TI'S  
AVAILABLE

# ANTHEM CORPORATE

3715-3719 W ANTHEM WAY, ANTHEM, AZ

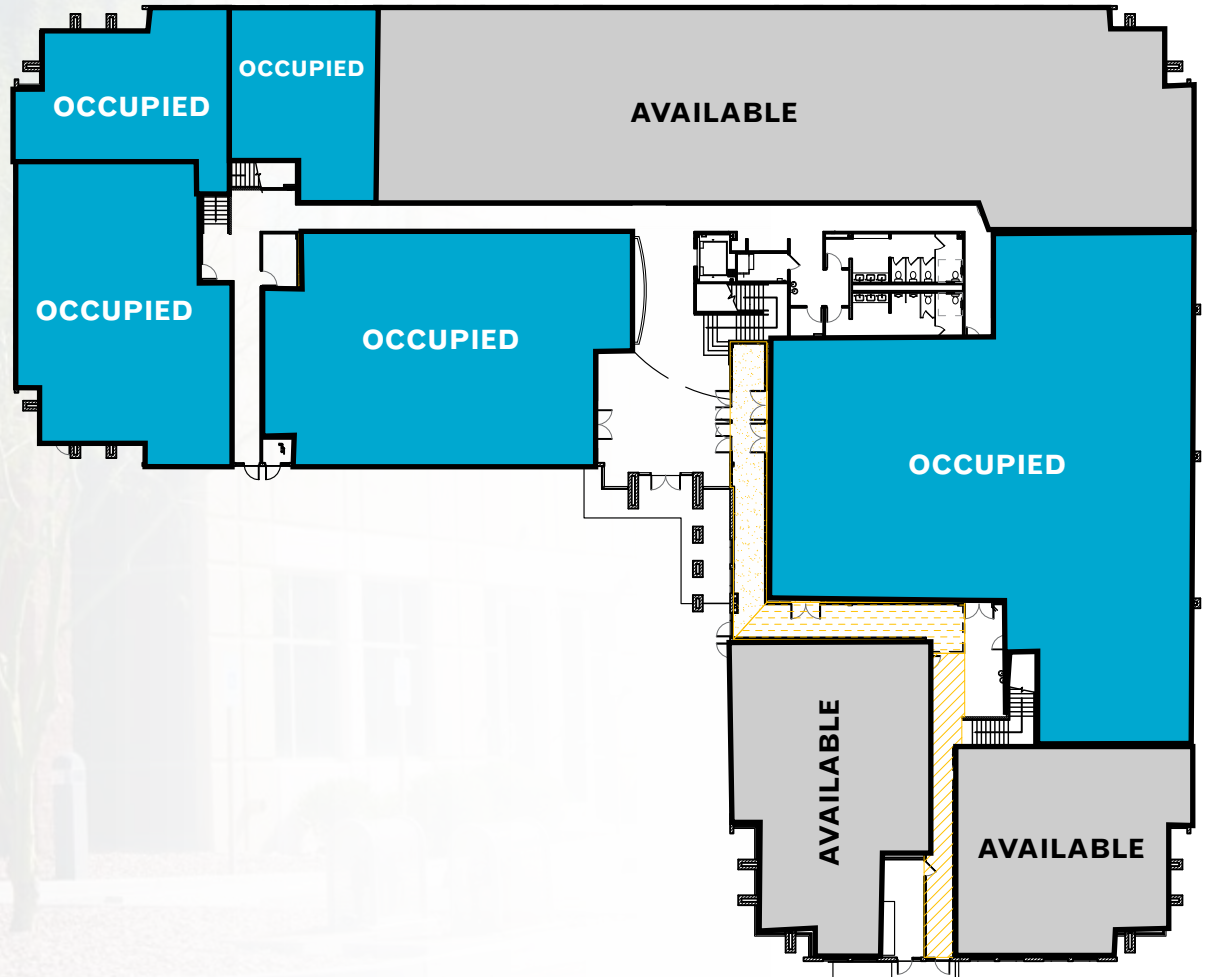
## AVAILABILITY 1ST FLOOR FLOORPLATE



±13,086 SF  
AVAILABLE



\$25.00  
FULL SERVICE



PLEASE CONTACT YOUR EXCLUSIVE ADVISORS FOR MORE INFORMATION

KATHLEEN MORGAN • Managing Director • 602.952.3815 • kmorgan@ngkf.com

TRISHA TALBOT • Managing Director • 602.952.3880 • ttalbot@ngkf.com



**Newmark  
Knight Frank**

# ANTHEM CORPORATE

3715 W ANTHEM WAY, ANTHEM, AZ

## AVAILABILITY

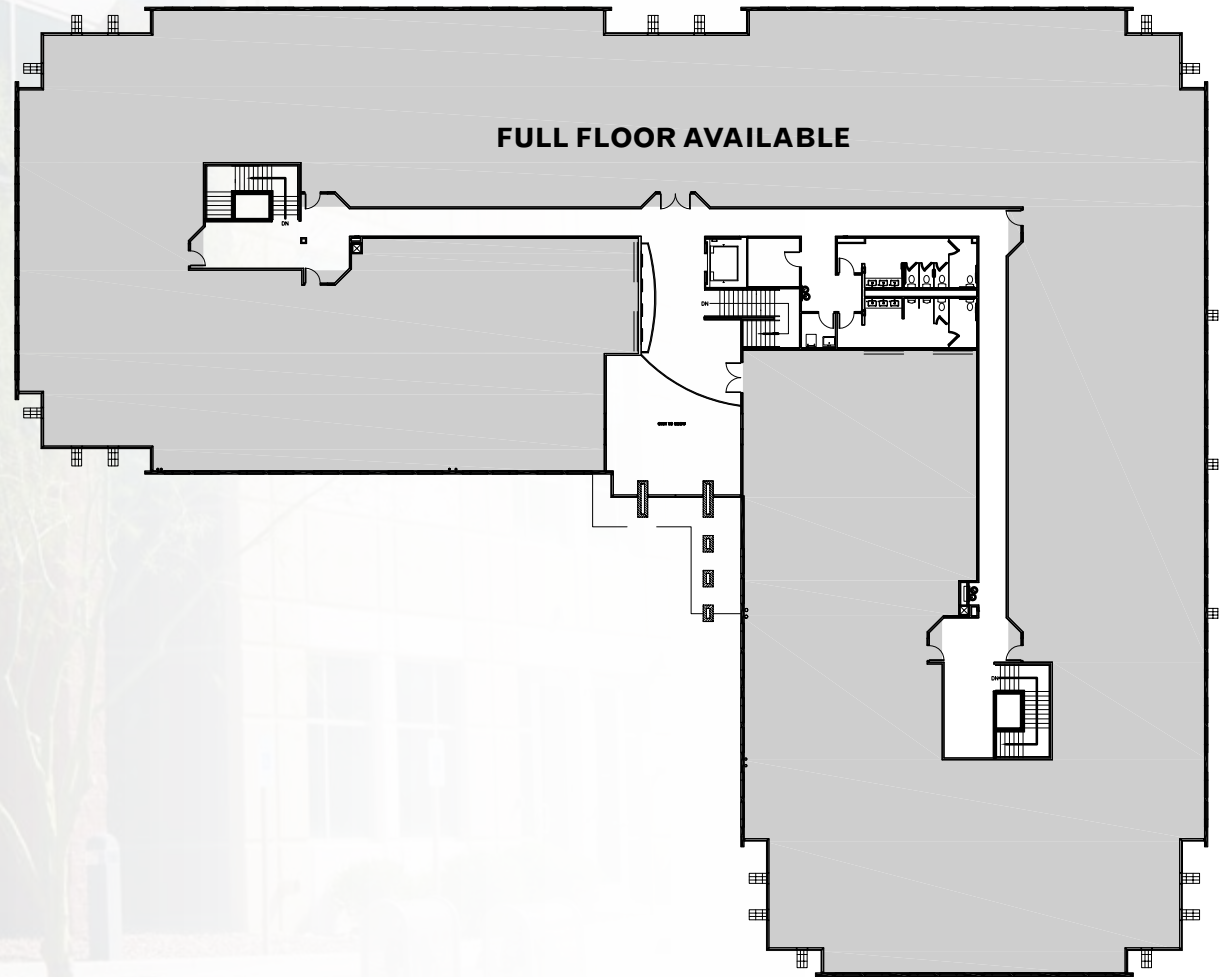
2ND FLOOR FLOOR PLATE  
FULL FLOOR USER



±30,361 SF  
AVAILABLE



\$25.00  
FULL SERVICE



PLEASE CONTACT YOUR EXCLUSIVE ADVISORS FOR MORE INFORMATION

KATHLEEN MORGAN ♦ Managing Director ♦ 602.952.3815 ♦ kmorgan@ngkf.com

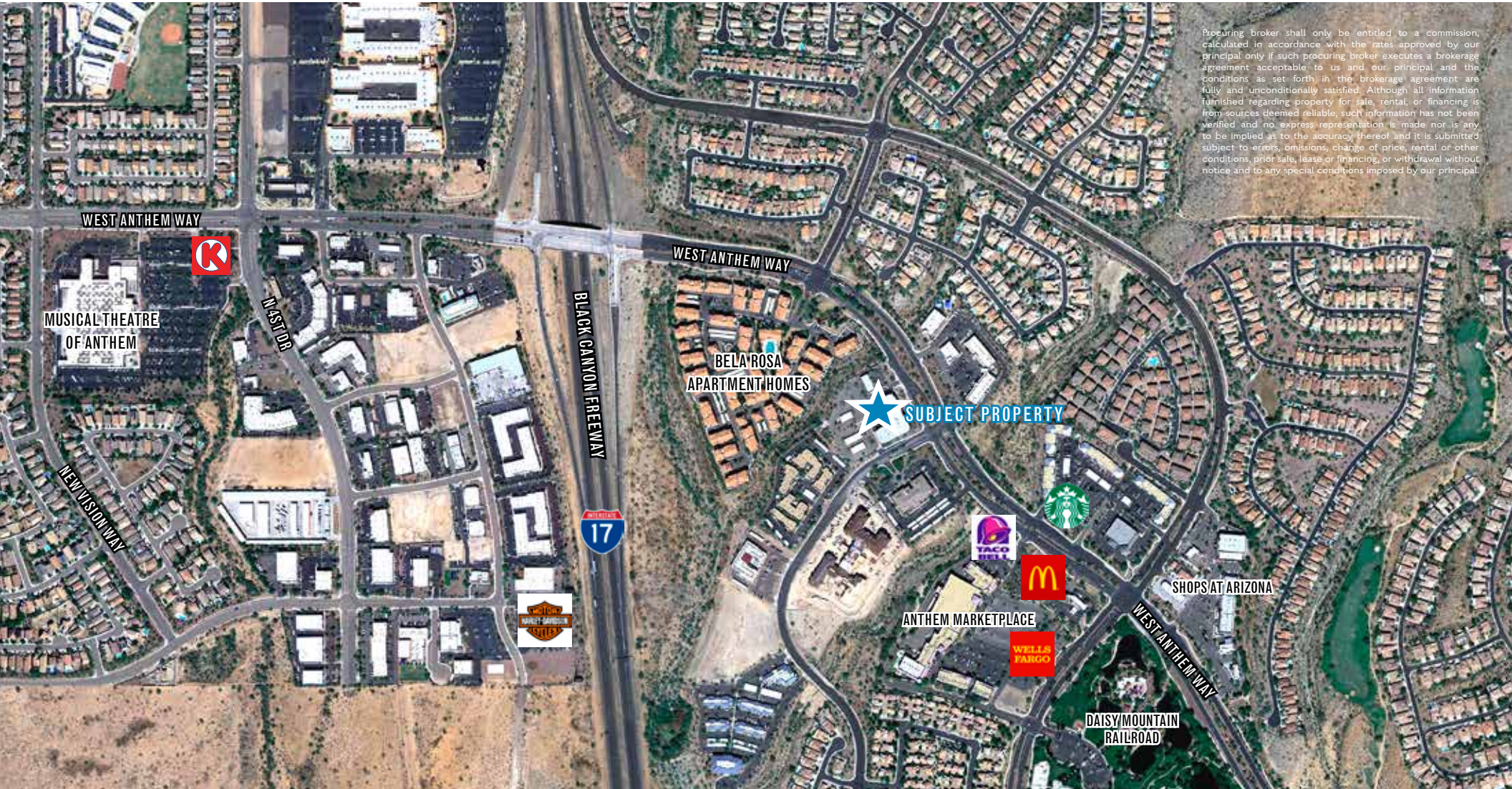
TRISHA TALBOT ♦ Managing Director ♦ 602.952.3880 ♦ ttalbot@ngkf.com



# LOCATION

# ANTHEM CORPORATE

3715 W ANTHEM WAY, ANTHEM, AZ



Procuring broker shall only be entitled to a commission, calculated in accordance with the rates approved by our principal only if such procuring broker executes a brokerage agreement acceptable to us and our principal and the conditions as set forth in the brokerage agreement are fully and unconditionally satisfied. Although all information furnished regarding property for sale, rental, or financing is from sources deemed reliable, such information has not been verified and no express representation is made nor is any to be implied as to the accuracy thereof and it is submitted subject to errors, omissions, change of price, rental or other conditions, prior sale, lease or financing, or withdrawal without notice and to any special conditions imposed by our principal.

PLEASE CONTACT YOUR EXCLUSIVE ADVISORS FOR MORE INFORMATION

KATHLEEN MORGAN ♦ Managing Director ♦ 602.952.3815 ♦ kmorgan@ngkf.com

TRISHA TALBOT ♦ Managing Director ♦ 602.952.3880 ♦ ttalbot@ngkf.com

