

652
HUDSON STREET

MEATPACKING DISTRICT

NE CORNER OF HUDSON & GANSEVOORT



PRIME MEATPACKING CORNER

JEWEL BOX SPACES

A UNIQUE OPPORTUNITY



652

HUDSON STREET

MEATPACKING DISTRICT

NE CORNER OF HUDSON & GANSEVOORT



SPACE A

on Hudson Street

1,800 SF

FRONTAGE

75' Wraparound

CEILING HEIGHT

12'

POSSESSION

Immediate



Can be combined with Space B



SPACE B

on Gansevoort Street

1,150 SF

FRONTAGE

25'

CEILING HEIGHT

12'

POSSESSION

Immediate



Can be combined with Space A



SPACE C

on Hudson Street

1,550 SF

FRONTAGE

20'

CEILING HEIGHT

12'

POSSESSION

Immediate



652

HUDSON STREET

MEATPACKING DISTRICT

NE CORNER OF HUDSON & GANSEVOORT



COMMENTS

- Landlord offering T.I. for qualified tenants
- Turn-key spaces with new HVAC installed
- Prime Meatpacking spaces new restoration hardware
- Corner opportunity featuring 90' of wraparound frontage
- Near newly signed Belstaf, Loro Piana, Frame Denim & Hermes

652

HUDSON STREET

MEATPACKING DISTRICT

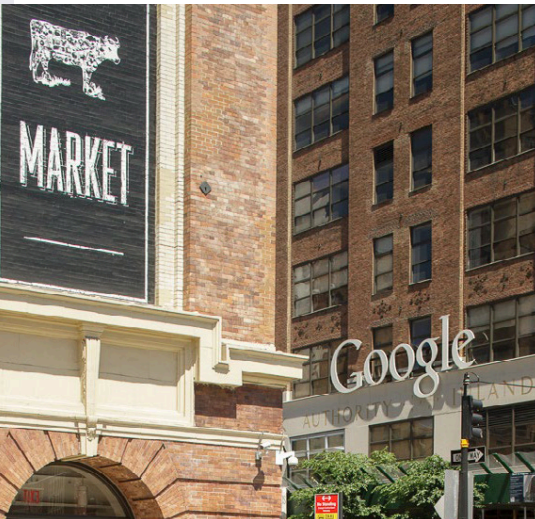
NE CORNER OF HUDSON & GANSEVOORT



1,600
PEDESTRIANS / HOUR

6M
VISITORS / YEAR

13.9M
RIDERSHIP AT 14TH STREET



FOR MORE INFORMATION, PLEASE CONTACT:



AUSTIN SHMUEL
AShmuel@ksrny.com
908.692.8500

ARIEL BARADARIAN
ABaradarian@ksrny.com
646.596.1884

JACK KHASKI
JackK@ksrny.com
917.355.0559

ALBERT MANOPLA
Amanopla@ksrny.com
212.380.8369

All information supplied in this marketing presentation and/or flyer is from sources deemed reliable and is furnished subject to errors, omissions, modifications, removal of listings from sale/lease and to any listing conditions Any square footage, dimensions, floor plans and/or technical data set forth are approximations and are subject to further elaboration/confirmation.