

FOR LEASE

WEST VALLEY DISTRIBUTION CENTER II 18616-18628 72ND AVE S, KENT, WA

6,000 - 12,000 TOTAL SQUARE FEET



SPACE HIGHLIGHTS

- North Kent Valley location with great access to I-5, I-405, & SR 167
- Located immediately south of Southcenter Mall
- 24' clear height

AVAILABLE SPACE

| Suite | Total SF (Office SF) | Loading | Rental Rate | Comments |
|------------------|-------------------------|---------|-------------------------------|--|
| 18616 | 6,000 (479) | 2 DH | \$0.52 shell \$0.75 office | Available September 1, 2016. |
| 18624 & 18628 | 12,000 (1,326) | 4 DH | \$0.52 shell \$0.75 office | Available August 1, 2016. Divisible to 6,000 SF with 421 SF office or 6,000 SF with 905 SF office. |

Owned by

INDUSTRIAL
PROPERTY TRUST®



industrialpropertytrust.com

Leased by

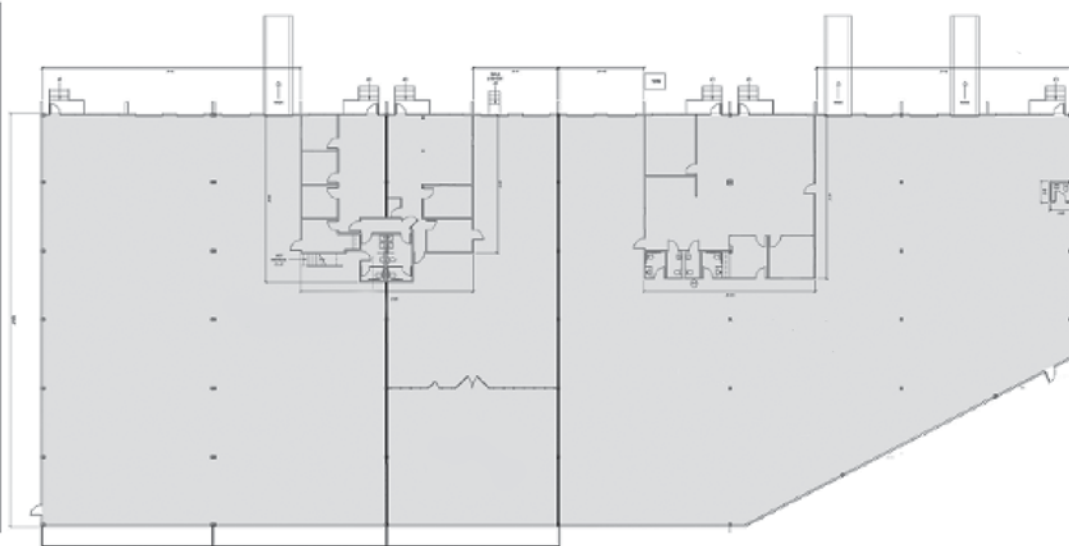
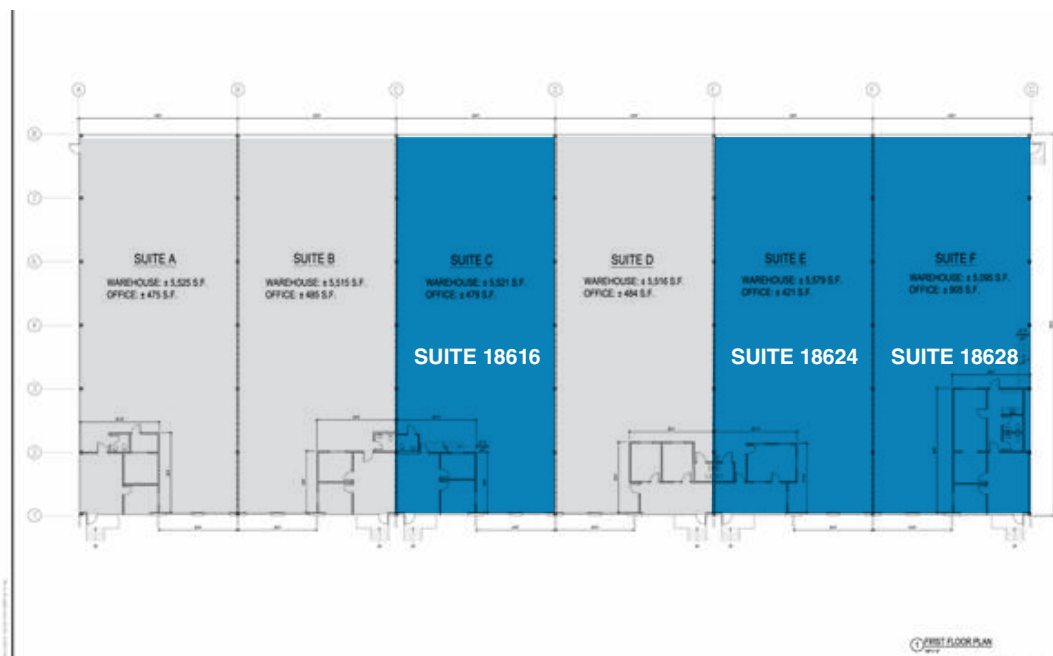
km **Kidder
Mathews**

Thad Mallory | Tony Miltenberger | Travis Stanaway
kiddermathews.com | 206.248.7300

WEST VALLEY DISTRIBUTION CENTER II

6,000 - 12,000 TOTAL SQUARE FEET

FLOORPLANS



Owned by

INDUSTRIAL
PROPERTY TRUST®



industrialpropertytrust.com

Leased by

km Kidder
Mathews

Thad Mallory | Tony Miltenberger | Travis Stanaway
kiddermathews.com | 206.248.7300

WEST VALLEY DISTRIBUTION CENTER II

6,000 - 12,000 TOTAL SQUARE FEET

PROPERTY AERIAL



Owned by

INDUSTRIAL
PROPERTY TRUST®



industrialpropertytrust.com

Leased by

km **Kidder
Mathews**

Thad Mallory | Tony Miltenberger | Travis Stanaway
kiddermathews.com | 206.248.7300