
RETAIL SPACE WITH EXCELLENT VENTURA BOULEVARD EXPOSURE

21720-32 Ventura Boulevard, Woodland Hills, CA 91364



GREG OFFSAY · Vice President
818.501.2212 x104 · greg@illicre.com
BRE #01837719

JESSE KNIGHT · Associate
818.501.2212 x161 · jesse@illicre.com
BRE #02058999



RETAIL SPACE WITH EXCELLENT VENTURA BOULEVARD EXPOSURE

21720-32 Ventura Boulevard, Woodland Hills, CA 91364



PROPERTY FEATURES

- + ±1,475 SF in-line
- + Excellent frontage on Ventura Boulevard provides high visibility and valuable exposure
- + Beautiful building with ±10ft high glass store fronts with chrome framing and ±12ft ceilings
- + On-site parking (± 4 :1,000 SF)
- + Building signage available



AREA AMENITIES

- + Co-tenants include Tapout Fitness, State Bank of India (California), Pure Barre & Insatiable Sun Tanning
- + Local retailers include Blue Bottle Coffee, Urban Plates, Lodge Bread, Ralphs Supermarket, Sprouts Farmers Market, Whole Foods, Rite-Aid Pharmacy, Petco, GNC, Starbucks, & many more



GREG OFFSAY · Vice President
818.501.2212 x104 · greg@illicre.com
BRE #01837719

JESSE KNIGHT · Associate
818.501.2212 x161 · jesse@illicre.com
BRE #02058999



RETAIL SPACE WITH EXCELLENT VENTURA BOULEVARD EXPOSURE

21720-32 Ventura Boulevard, Woodland Hills, CA 91364



POPULATION

1-mile	18,421
3-mile	152,735
5-mile	364,250



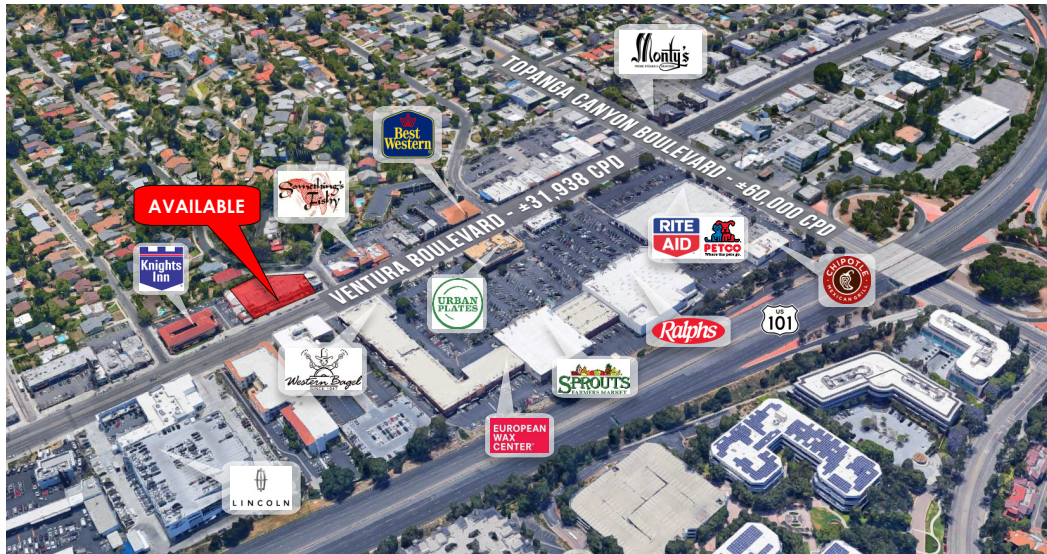
AVERAGE HOUSEHOLD INCOME

1-mile	\$125,179
3-mile	\$120,828
5-mile	\$110,026



DAYTIME POPULATION

1-mile	25,681
3-mile	87,306
5-mile	146,995



TRAFFIC COUNT

±31,938 cars per day
on Ventura Boulevard

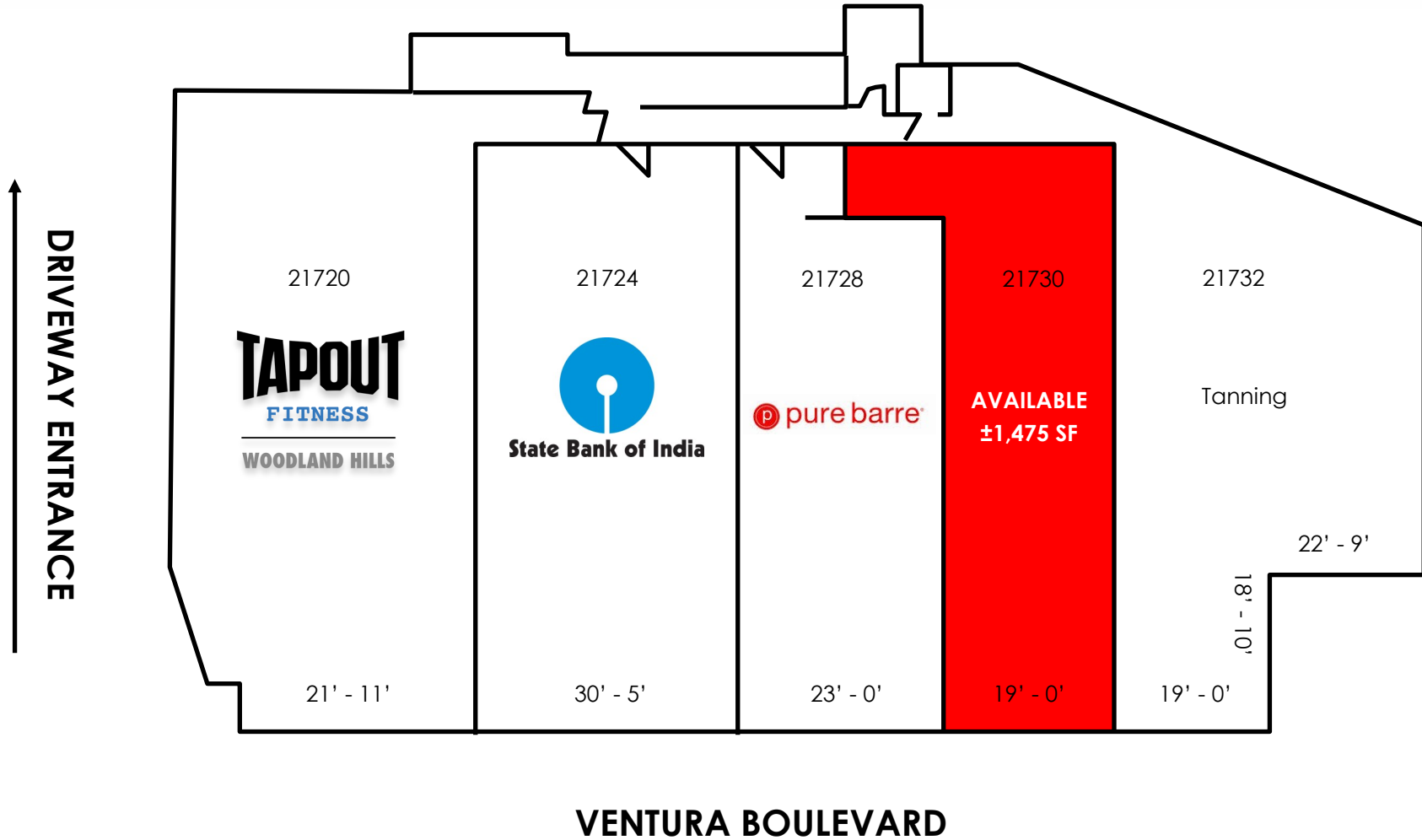
GREG OFFSAY · Vice President
818.501.2212 x104 · greg@illicre.com
BRE #01837719

JESSE KNIGHT · Associate
818.501.2212 x161 · jesse@illicre.com
BRE #02058999



RETAIL SPACE WITH EXCELLENT VENTURA BOULEVARD EXPOSURE

21720-32 Ventura Boulevard, Woodland Hills, CA 91364



GREG OFFSAY · Vice President
818.501.2212 x104 · greg@illicre.com
BRE #01837719

JESSE KNIGHT · Associate
818.501.2212 x161 · jesse@illicre.com
BRE #02058999



RETAIL SPACE WITH EXCELLENT VENTURA BOULEVARD EXPOSURE

21720-32 Ventura Boulevard, Woodland Hills, CA 91364



GREG OFFSAY · Vice President
818.501.2212 x104 · greg@illicre.com
BRE #01837719

JESSE KNIGHT · Associate
818.501.2212 x161 · jesse@illicre.com
BRE #02058999

