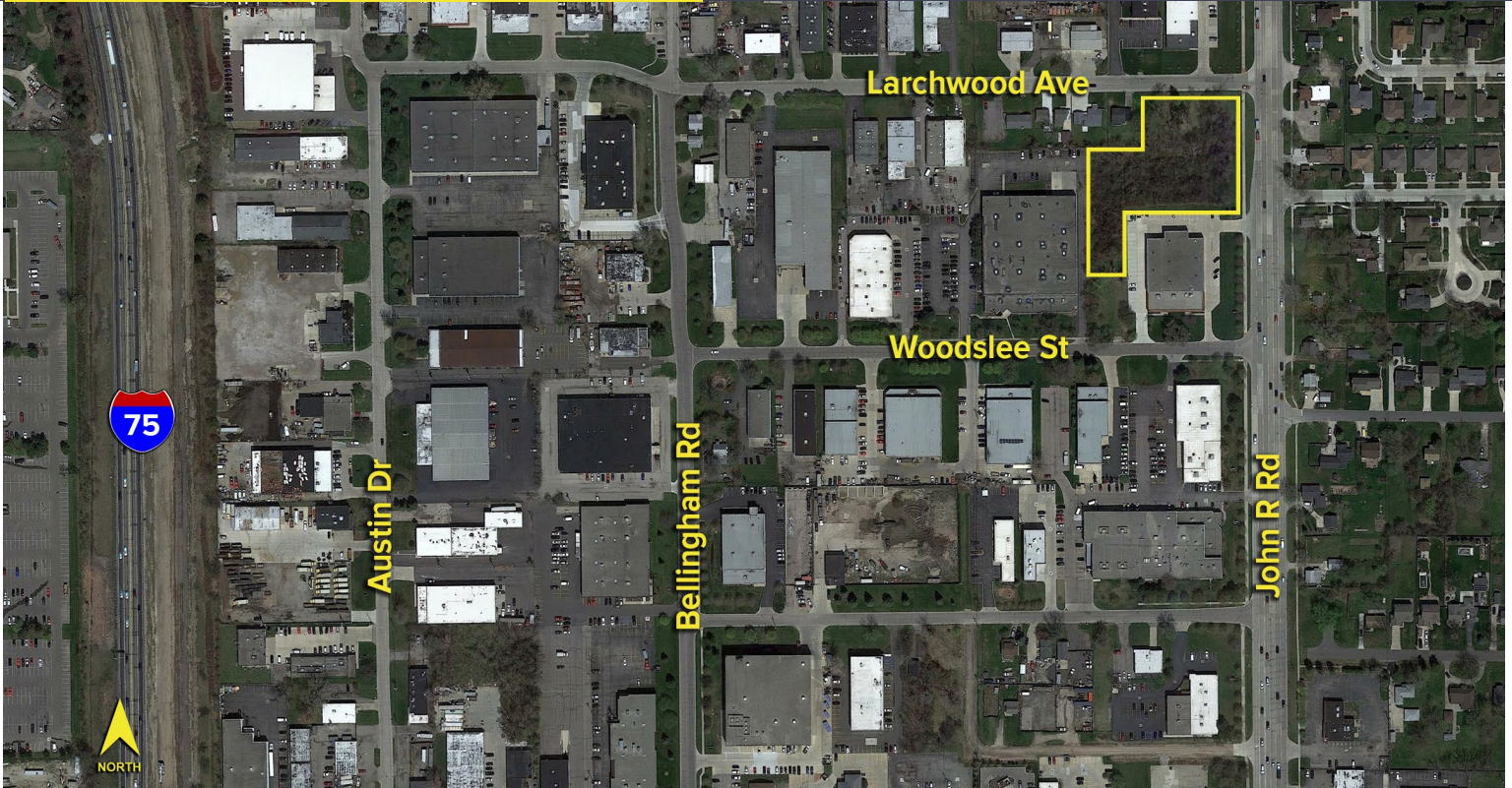


1980 LARCHWOOD DRIVE
TROY, MICHIGAN

VACANT LAND FOR SALE
1.87 Acres Available

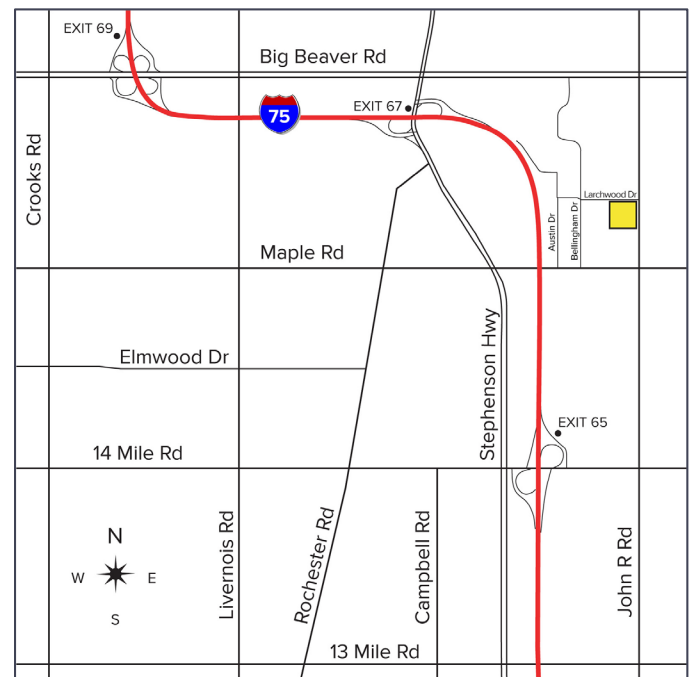


**SIGNATURE
ASSOCIATES**
KNOW SIGNATURE | KNOW RESULTS



PROPERTY FEATURES

- 1.87 acres available for sale
- Zoned Light Industrial
- Sanitary and storm sewers
- Water and gas on site
- Rare 2 acre parcel in Troy
- 255' of frontage on John R Road
- Sale price \$650,000 (\$347,593.58/acre)



For more information, please contact:

JOHN BOYD
(248) 948 0102
jboyd@signatureassociates.com

PAUL HOGE
(248) 948 0103
paulhoge@signatureassociates.com

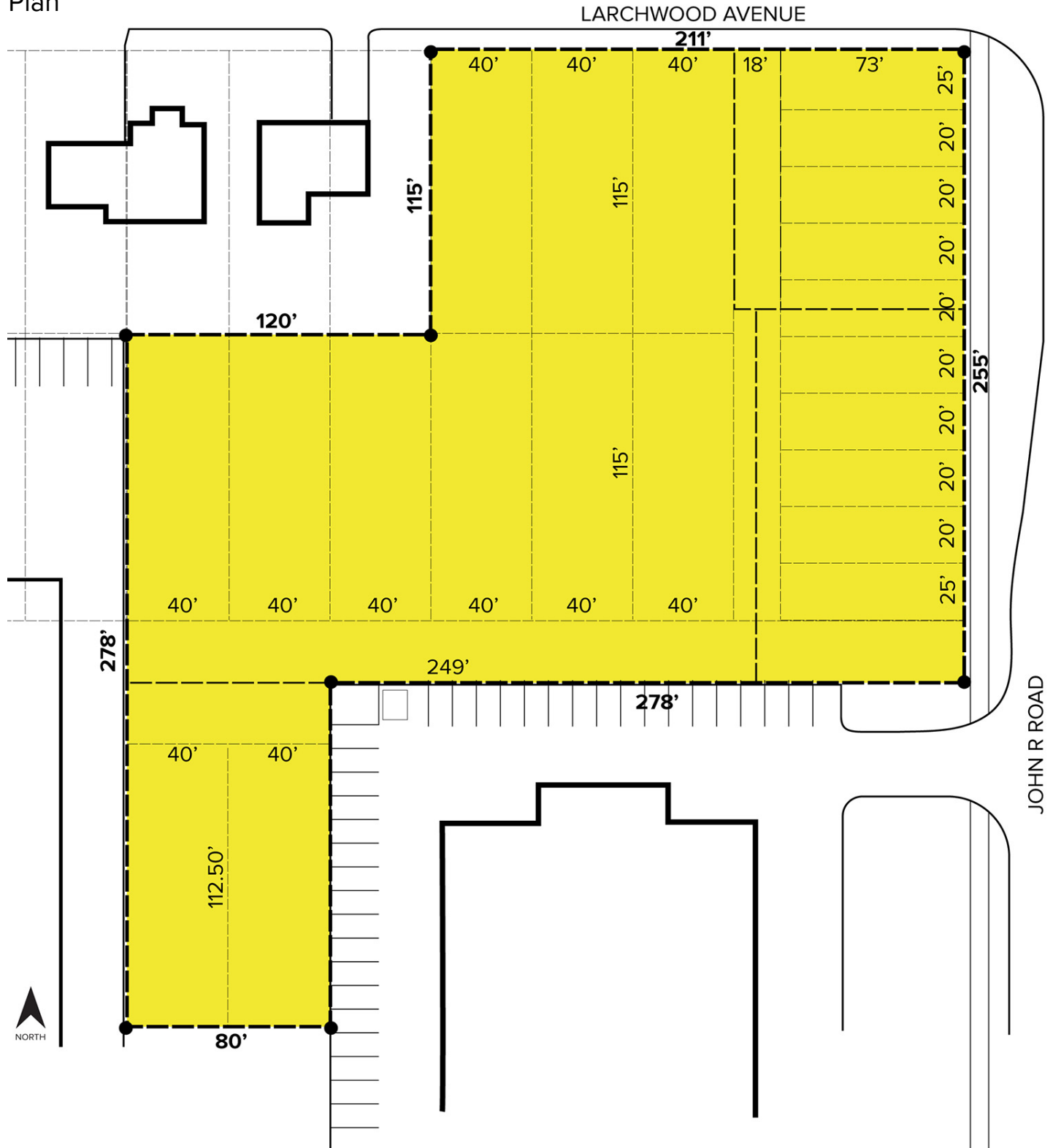
SIGNATURE ASSOCIATES
One Towne Square, Suite 1200
Southfield, MI 48076
www.signatureassociates.com

1980 Larchwood Drive – Troy, Michigan

Vacant Land For Sale

1.87
Acres
AVAILABLE

Site Plan



For more information, please contact:

JOHN BOYD

(248) 948 0102

jboyd@signatureassociates.com

PAUL HOGE

(248) 948 0103

paulhoge@signatureassociates.com

SIGNATURE ASSOCIATES

One Towne Square, Suite 1200

Southfield, MI 48076

www.signatureassociates.com