

FOR LEASE

MANUFACTURING



212 S. BERKELEY CIRCLE | FULLERTON, CALIFORNIA



PROPERTY HIGHLIGHTS

- SUBLEASE OR LONGER TERM LEASE
- Approximately 2,900 SF Industrial Space
- Approximately 400 SF Office
- 240 AMPS / 480 V
- Yard Space
- 2 Ground Level Doors
- Parking Ratio: 1.10 / 1,000 SF
- 15' Minimum Clearance
- Lease Rate \$1.85/SF Gross
- Cooler and Freezer - Approximately 1,050 SF/Available for Purchase/Like Brand New

EXCLUSIVELY LISTED BY:

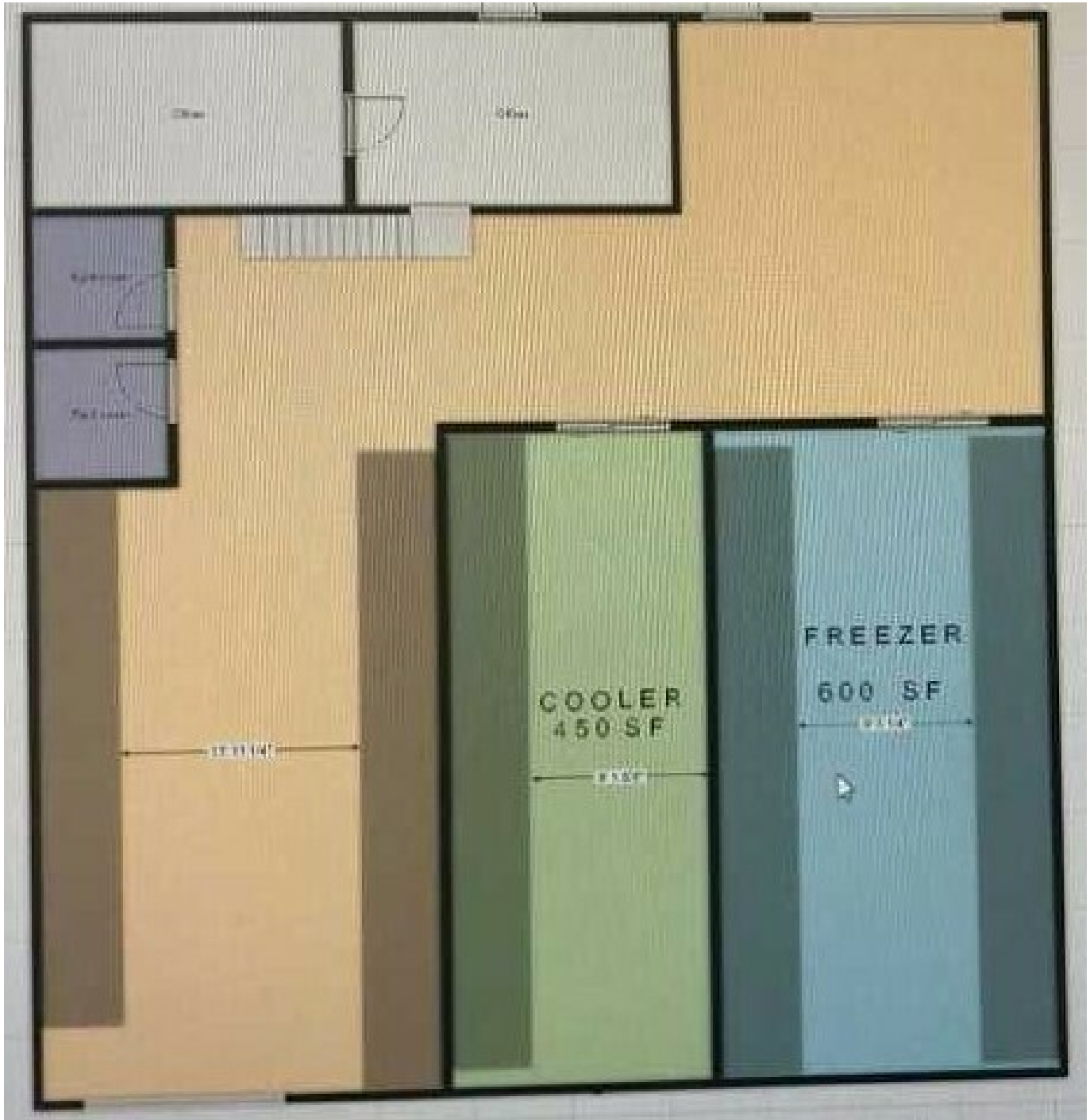
Paul Fisher

Executive Vice President
949.468.2324 Direct
pfisher@naicapital.com
CA DRE #01302114



www.naicapital.com

FLOOR PLAN



Paul Fisher

Executive Vice President
949.468.2324 Direct
pfisher@naicapital.com

CA DRE #01302114

No warranty, express or implied, is made as to the accuracy of the information contained herein. This information is submitted subject to errors, omissions, change of price, rental or other conditions, withdrawal without notice, and is subject to any special listing conditions imposed by our principals. Cooperating brokers, buyers, tenants and other parties who receive this document should not rely on it, but should use it as a starting point of analysis, and should independently confirm the accuracy of the information contained herein through a due diligence review of the books, records, files and documents that constitute reliable sources of the information described herein. Logos are for identification purposes only and may be trademarks of their respective companies. NAI Capital Commercial, Inc. CAL DRE Lic. #02130474