
1 ACRE PRIME BUSINESS/COMMERCIAL LOT

272 Neff Avenue, Harrisonburg, VA 22801

Executive Summary



OFFERING SUMMARY

Sale Price: \$539,000

Lot Size: 0.99 Acres

Zoning: B2

Utilities: Public Water Available
Public Sewer Available

MLS#: 602719



PROPERTY OVERVIEW

One of the few remaining PRIME BUSINESS/COMMERCIAL LOTS in Harrisonburg. Located within Harrisonburg's primary office/business district with national retailers and high density residential surrounding while maintaining convenient access via Neff Avenue. Located within a 1-mile radius to Harrisonburg's main retail corridor (E Market Street) and James Madison University.

For More Information:

Jason Song
540.383.6692
jason.song@cottonwood.com

Butch Strawderman
540.246.5959
butch.strawderman@cottonwood.com

COTTONWOOD
COMMERCIAL
A COMMERCIAL REAL ESTATE BROKERAGE

1 ACRE PRIME BUSINESS/COMMERCIAL LOT

272 Neff Avenue, Harrisonburg, VA 22801

Additional Photos



For More Information:

Jason Song

540.383.6692

jason.song@cottonwood.com

Butch Strawderman

540.246.5959

butch.strawderman@cottonwood.com

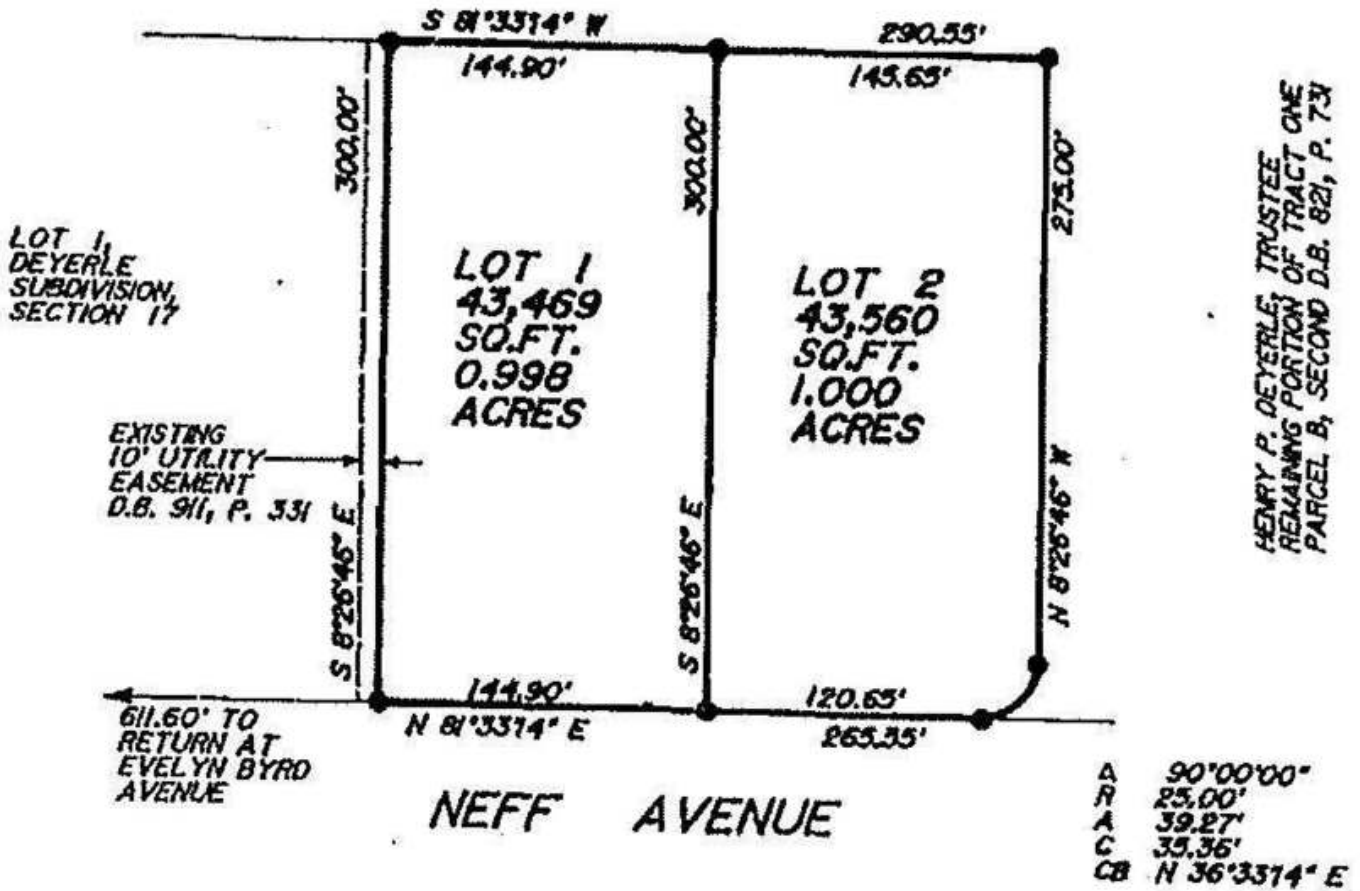
COTTONWOOD
COMMERCIAL
A COMMERCIAL REAL ESTATE BROKERAGE

1 ACRE PRIME BUSINESS/COMMERCIAL LOT

272 Neff Avenue, Harrisonburg, VA 22801

PLAT

HENRY P. DEYERLE, TRUSTEE
REMAINING PORTION OF TRACT ONE,
PARCEL B, SECOND D.B. 821, P. 731



FINAL PLAT

For More Information:

Jason Song
540.383.6692
jason.song@cottonwood.com

Butch Strawderman
540.246.5959
butch.strawderman@cottonwood.com

COTTONWOOD
COMMERCIAL
A COMMERCIAL REAL ESTATE BROKERAGE

1 ACRE PRIME BUSINESS/COMMERCIAL LOT

272 Neff Avenue, Harrisonburg, VA 22801

Location Maps



For More Information:

Jason Song

540.383.6692

jason.song@cottonwood.com

Butch Strawderman

540.246.5959

butch.strawderman@cottonwood.com

COTTONWOOD
COMMERCIAL
A COMMERCIAL REAL ESTATE BROKERAGE