

FOR LEASE | OWINGS MILLS

9621 REISTERSTOWN RD, OWINGS MILLS, MD 21117

VALLEY PLACE TWO



Steven L. Cornblatt

443.921.9331

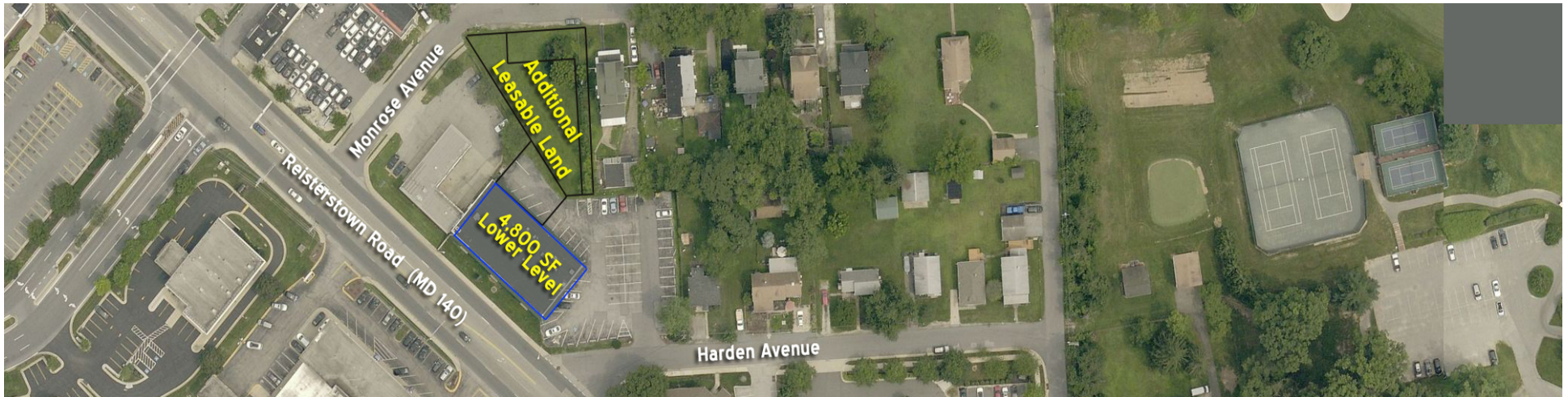
scornblatt@troutdaniel.com

James Cornblatt

410.963.9662

jcornblatt@troutdaniel.com





PROPERTY HIGHLIGHTS

- 1,250 SF end cap & 4,800 SF lower level space available
- Ideal uses include for 1250 sf: retail space, law office, wellness, spa and personal care services
- Ideal uses include for 4800 sf: child daycare, adult daycare, dance studio, wellness, spa and activity uses, sanctuary worship space and meeting & office space
- Dedicated pylon sign for lower level tenant
- BL Zoned
- Easy access and close proximity to major highways (I-695, I-795, I-83), Westminster Pike (Rt 140) plus numerous dining, banking, shopping and service amenities



Steven L. Cornblatt

443.921.9331
scornblatt@troutdaniel.com

James Cornblatt

410.963.9662
jcornblatt@troutdaniel.com

The information contained in this marketing brochure has been obtained from sources we believe to be reliable; however, Trout Daniel & Associates LLC has not verified, and will not verify any of the information contained herein, nor has Trout Daniel & Associates LLC conducted any investigation regarding these matters and makes no warranty or representation whatsoever regarding the accuracy or completeness of the information provided. An agent indicated by an asterisk (*) has a direct or indirect ownership interest in this property.

9621 REISTERSTOWN RD, OWINGS MILLS, MD 21117

VALLEY PLACE TWO



Aerial



Steven L. Cornblatt

443.921.9331

scornblatt@troutdaniel.com

James Cornblatt

410.963.9662

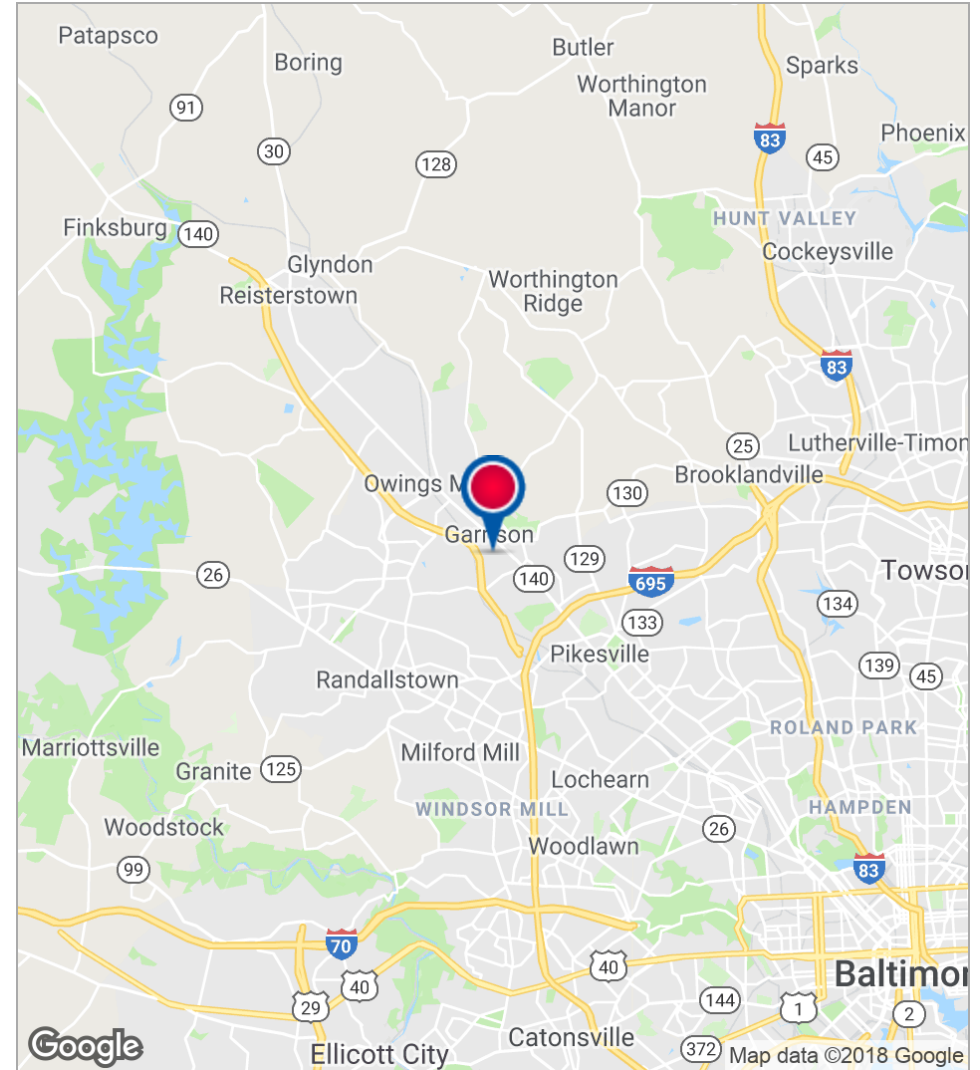
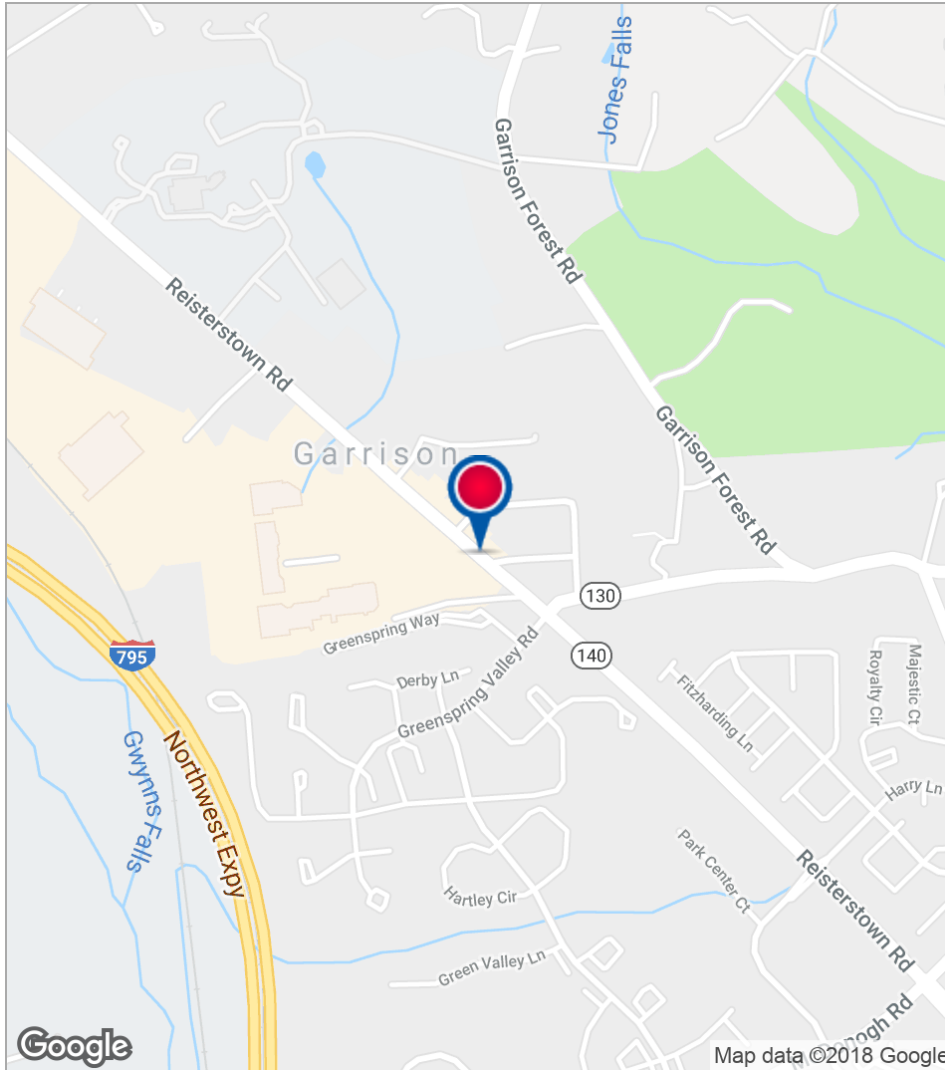
jcornblatt@troutdaniel.com

The information contained in this marketing brochure has been obtained from sources we believe to be reliable; however, Trout Daniel & Associates LLC has not verified, and will not verify any of the information contained herein, nor has Trout Daniel & Associates LLC conducted any investigation regarding these matters and makes no warranty or representation whatsoever regarding the accuracy or completeness of the information provided. An agent indicated by an asterisk (*) has a direct or indirect ownership interest in this property.

9621 REISTERSTOWN RD, OWINGS MILLS, MD 21117

VALLEY PLACE TWO

Location Maps



Steven L. Cornblatt

443.921.9331

scornblatt@troutdaniel.com

James Cornblatt

410.963.9662

jcornblatt@troutdaniel.com

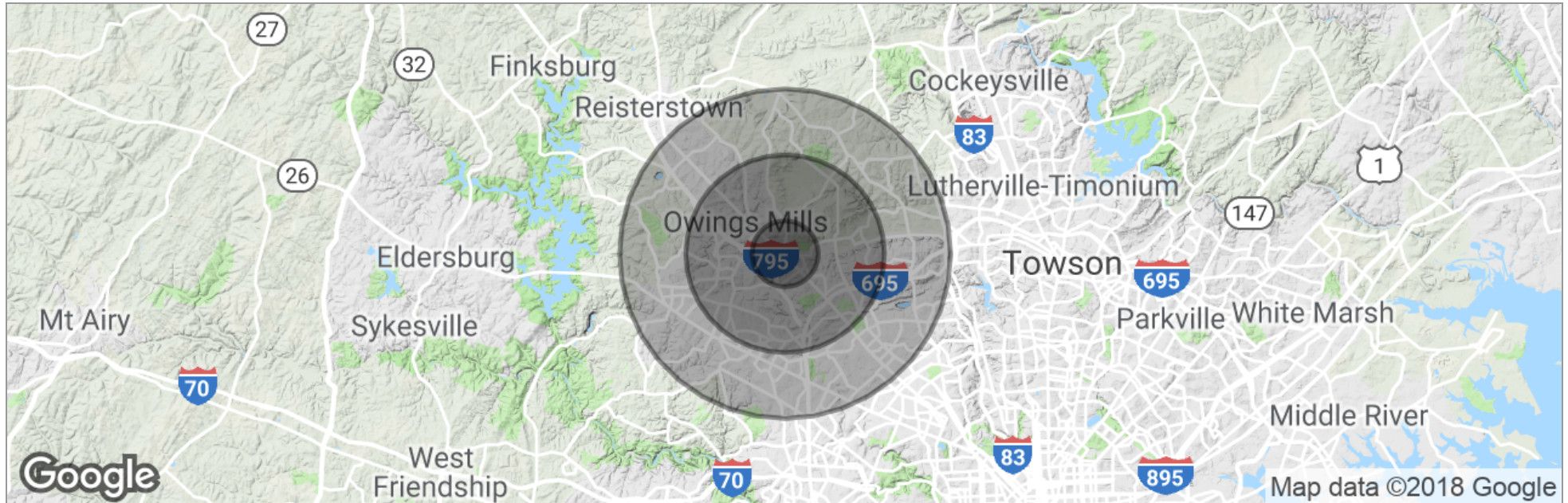
The information contained in this marketing brochure has been obtained from sources we believe to be reliable; however, Trout Daniel & Associates LLC has not verified, and will not verify any of the information contained herein, nor has Trout Daniel & Associates LLC conducted any investigation regarding these matters and makes no warranty or representation whatsoever regarding the accuracy or completeness of the information provided. An agent indicated by an asterisk (*) has a direct or indirect ownership interest in this property.

9621 REISTERSTOWN RD, OWINGS MILLS, MD 21117

VALLEY PLACE TWO



Demographics Map



	1 Mile	3 Miles	5 Miles
Total Population	5,385	66,539	200,758
Population Density	1,714	2,353	2,556
Median Age	42.5	39.6	38.6
Median Age (Male)	37.5	37.8	36.5
Median Age (Female)	45.3	41.1	40.4
Total Households	2,410	27,494	81,332
# of Persons Per HH	2.2	2.4	2.5
Average HH Income	\$114,798	\$91,321	\$85,454
Average House Value	\$410,361	\$363,779	\$311,518

* Demographic data derived from 2010 US Census

Steven L. Cornblatt

443.921.9331
scornblatt@troutdaniel.com

James Cornblatt

410.963.9662
jcornblatt@troutdaniel.com

The information contained in this marketing brochure has been obtained from sources we believe to be reliable; however, Trout Daniel & Associates LLC has not verified, and will not verify any of the information contained herein, nor has Trout Daniel & Associates LLC conducted any investigation regarding these matters and makes no warranty or representation whatsoever regarding the accuracy or completeness of the information provided. An agent indicated by an asterisk (*) has a direct or indirect ownership interest in this property.