

SOUTH LAKES OFFICE PARK 9222-24-26 SOUTH ELWOOD JENKS, OK 74037



OFFICE SPACE FOR LEASE

- * Suite 9226-C - 1,250 RSF Available 6/1/24
- * 5 Offices, Reception, Work Room, Restroom
- * Garden Office Building with private entrances.
- * Front door parking.
- * Exterior building signage.
- * Monument street signage.
- * Located in Jenks across from South Lakes Golf Course

OFFERING SUMMARY

Lease Rate:	\$19.00 SF/yr (Full Service)
Available SF:	1,250 SF
Building Size:	11,250 SF
Parking:	Curbside

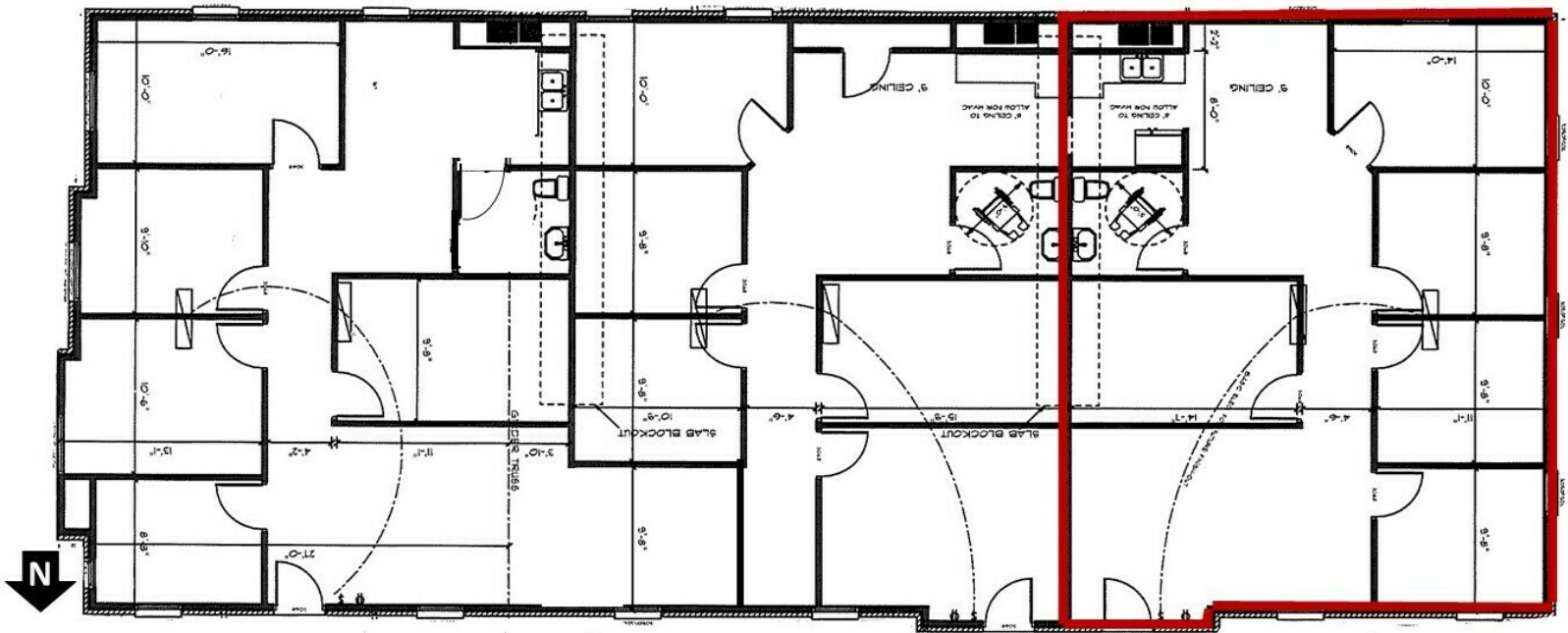
DEMOGRAPHICS	1 MILE	5 MILES	10 MILES
Total Households	872	43,440	174,937
Total Population	2,335	104,337	407,766
Average HH Income	\$73,688	\$69,131	\$70,798

TANDA FRANCIS

tfrancis@priceedwards.com
O: 918.394.1000

SOUTH LAKES OFFICE PARK 9222-24-26 SOUTH ELWOOD JENKS, OK 74037

Suite 9226-C
1,250 SF



TANDA FRANCIS

tfrancis@priceedwards.com

O: 918.394.1000