



309 Vine Street, Cincinnati, Ohio 45202

PROPERTY HIGHLIGHTS

-  Be a part of the Fully Occupied City Club Luxury Apartment Building
-  Up to 11,191 SF Available with 16 FT+ Clear Heights
-  300 Parking Spaces in the On-Site Garage
-  Located in the Heart of Downtown Cincinnati
-  Just a Short Walk to Fountain Square, The Banks, Stadiums, and Bars/Entertainment
-  Amenities include a Rooftop Restaurant, Indoor/Outdoor Pool, First Floor Market & Café (Opening Soon), and Theater Room
-  294 Luxury Apartment Units

DEMOGRAPHICS

<u>Year 2019</u>	<u>One Mile</u>	<u>Three Mile</u>	<u>Five Mile</u>
Estimated Population	17,625	139,402	300,379
Median Income	\$62,268	\$46,458	\$50,576
Average HH Income	\$83,458	\$61,921	\$68,553
Daytime Population	12,762	230,902	286,789

Avg Daily Traffic Count: 10,600 (2019)



Anthony J. Palazzolo
513.924.5266
anthony@onsiteretailgroup.com

Joshua M. Rothstein
513.268.4453
josh@onsiteretailgroup.com



Anthony J. Palazzolo
 513.924.5266
anthony@onsiteretailgroup.com

Joshua M. Rothstein
 513.268.4453
josh@onsiteretailgroup.com

CITY CLUB RETAIL SPACE
309 Vine Street, Cincinnati, OH 45202



The information herein is produced using data from private and government sources deemed to be reliable and is provided without representation or warranty. Logos are for identification purposes only and may be trademarks of their respective companies. © 2020 OnSite Retail Group, LLC All Rights Reserved.

Building Amenities

309 Vine Street, Cincinnati, OH 45202



Pool Room



Event Space



Sky Deck

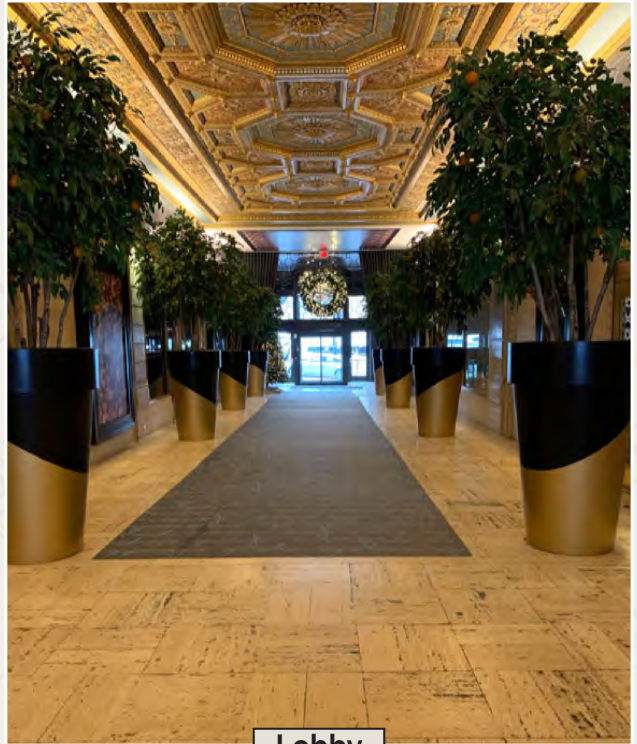
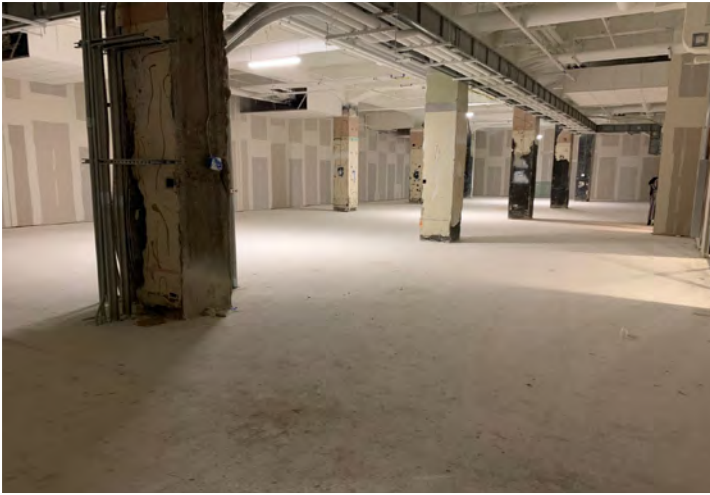
Anthony J. Palazzolo
anthony@onsiteretailgroup.com
513.924.5266

Joshua M. Rothstein
josh@onsiteretailgroup.com
513.268.4453

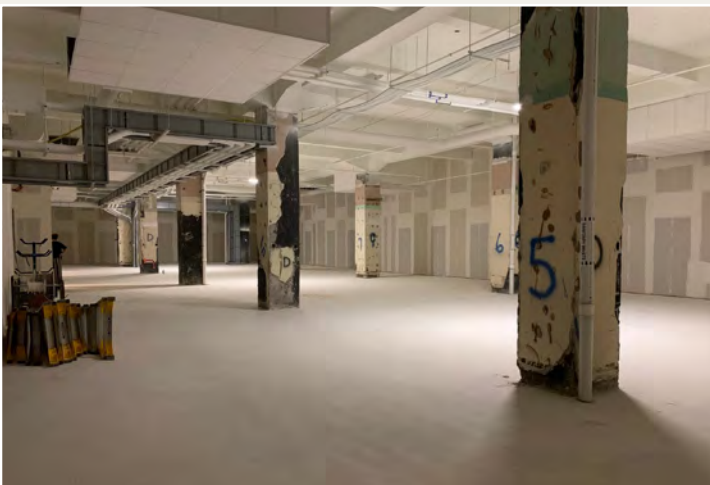


For Lease

309 Vine Street, Cincinnati, OH 45202



Lobby



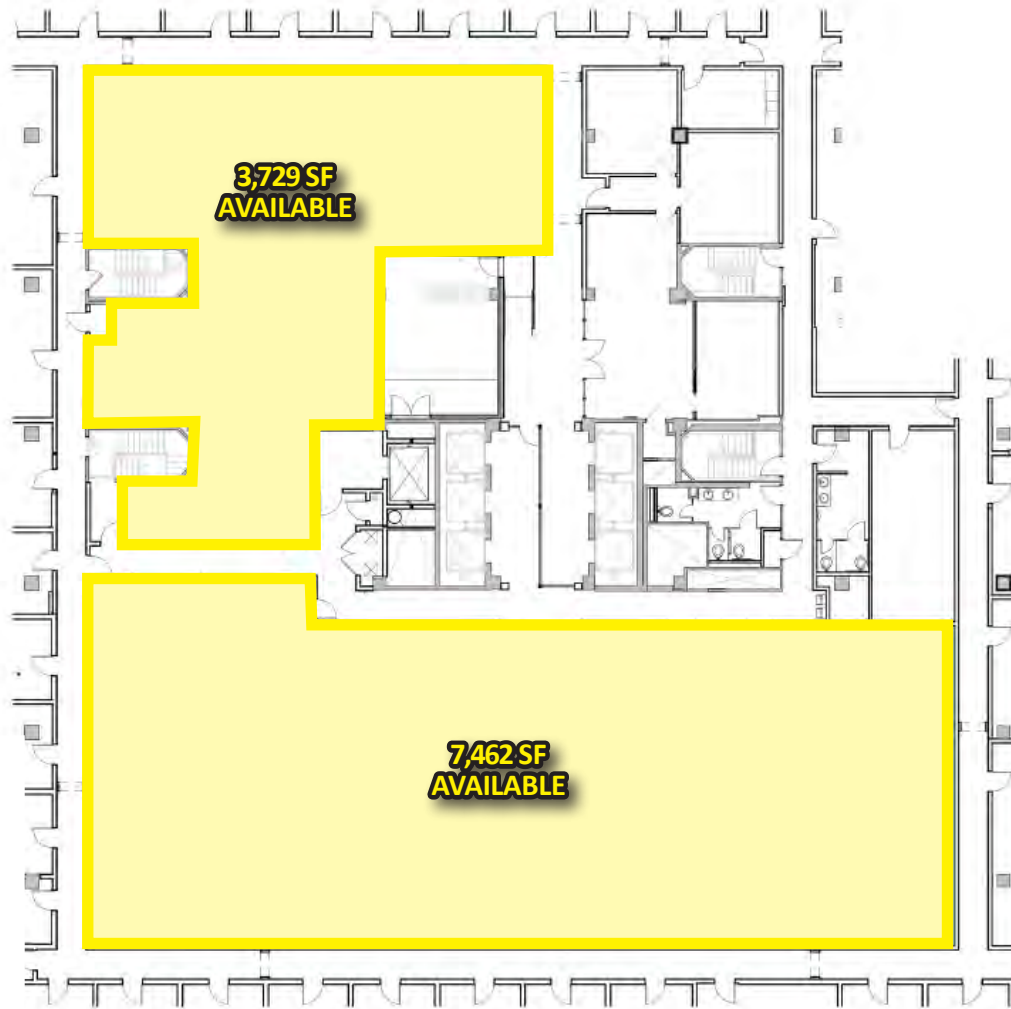
Anthony J. Palazzolo
anthony@onsiteretailgroup.com
513.924.5266

Joshua M. Rothstein
josh@onsiteretailgroup.com
513.268.4453



City Club

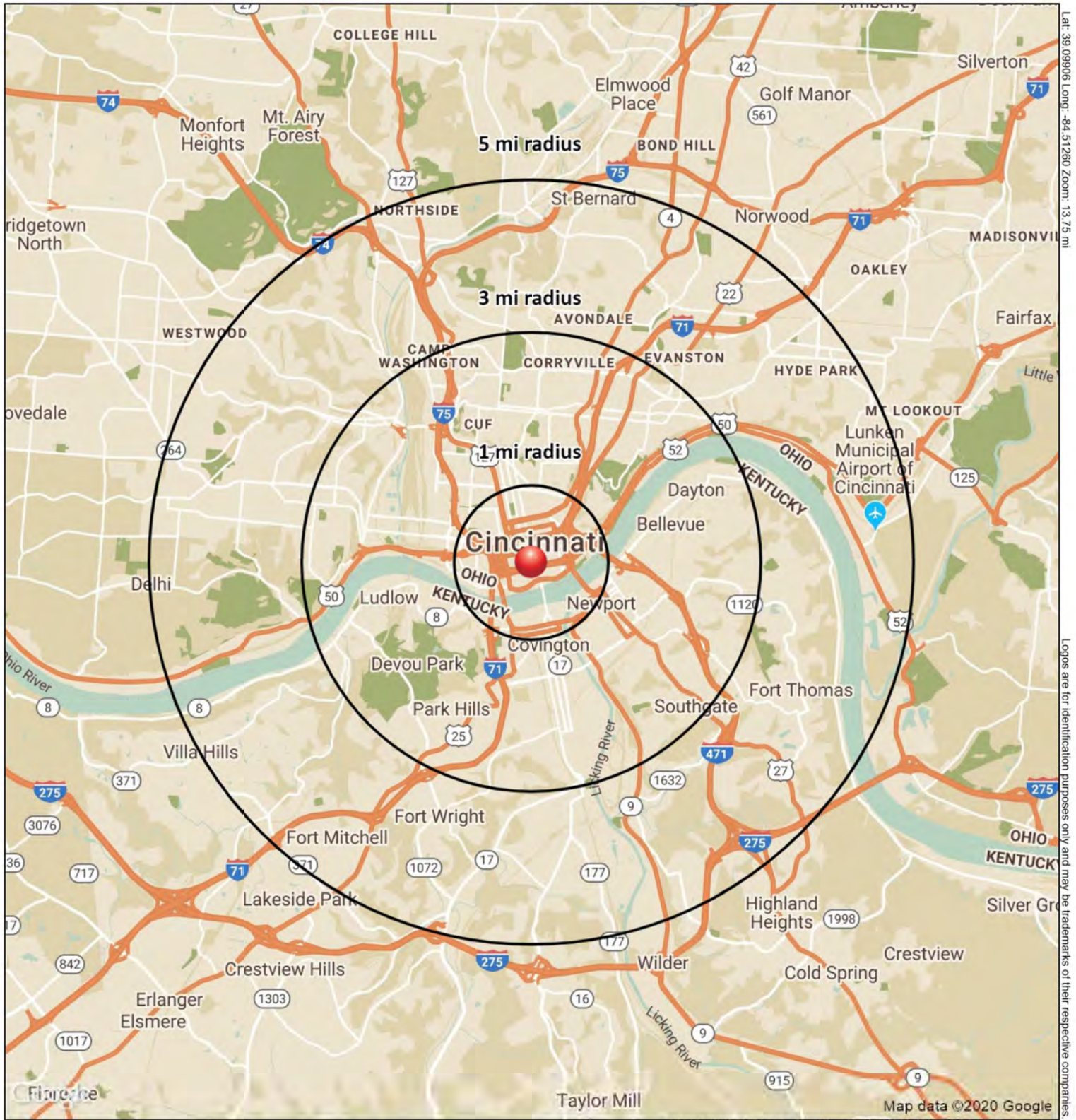
309 Vine Street, Cincinnati, OH 45202



Anthony J. Palazzolo
anthony@onsiteretailgroup.com
513.924.5266



Joshua M. Rothstein
josh@onsiteretailgroup.com
513.268.4453



Lat: 39.09906 Long: -84.51260 Zoom: 13.75 mi
Logos are for identification purposes only and may be trademarks of their respective companies.

309 Vine St
Cincinnati, OH 45202

January 2020

OnSite
Retail Group

This map was produced using data from private and government sources deemed to be reliable. The information herein is provided without representation or warranty.

SUMMARY PROFILE

2000-2010 Census, 2019 Estimates with 2024 Projections



Lat/Lon: -84.5126/39.0991

RS1

309 Vine St

Cincinnati, OH 45202

		1 mi radius	3 mi radius	5 mi radius
POPULATION	2019 Estimated Population	17,625	139,402	300,379
	2024 Projected Population	18,228	147,750	315,487
	2010 Census Population	14,696	132,075	292,043
	2000 Census Population	14,761	143,797	323,018
	Projected Annual Growth 2019 to 2024	0.7%	1.2%	1.0%
	Historical Annual Growth 2000 to 2019	1.0%	-0.2%	-0.4%
	2019 Median Age	34.4	33.4	34.2
HOUSEHOLDS	2019 Estimated Households	9,550	63,205	133,613
	2024 Projected Households	9,846	66,774	139,554
	2010 Census Households	7,300	57,473	124,841
	2000 Census Households	7,251	63,074	137,908
	Projected Annual Growth 2019 to 2024	0.6%	1.1%	0.9%
	Historical Annual Growth 2000 to 2019	1.7%	-	-0.2%
RACE AND ETHNICITY	2019 Estimated White	53.8%	65.6%	63.9%
	2019 Estimated Black or African American	39.0%	26.6%	28.9%
	2019 Estimated Asian or Pacific Islander	2.8%	2.9%	2.6%
	2019 Estimated American Indian or Native Alaskan	0.5%	0.3%	0.3%
	2019 Estimated Other Races	3.9%	4.6%	4.4%
	2019 Estimated Hispanic	3.9%	4.0%	3.8%
INCOME	2019 Estimated Average Household Income	\$83,458	\$61,921	\$68,553
	2019 Estimated Median Household Income	\$62,268	\$46,458	\$50,576
	2019 Estimated Per Capita Income	\$47,799	\$28,879	\$30,978
EDUCATION (AGE 25+)	2019 Estimated Elementary (Grade Level 0 to 8)	1.8%	3.8%	3.4%
	2019 Estimated Some High School (Grade Level 9 to 11)	7.4%	9.5%	8.8%
	2019 Estimated High School Graduate	16.6%	25.8%	26.1%
	2019 Estimated Some College	15.8%	19.6%	19.5%
	2019 Estimated Associates Degree Only	5.2%	6.9%	7.0%
	2019 Estimated Bachelors Degree Only	29.6%	20.8%	20.6%
	2019 Estimated Graduate Degree	23.6%	13.7%	14.6%
BUSINESS	2019 Estimated Total Businesses	3,961	11,867	16,919
	2019 Estimated Total Employees	121,762	230,902	286,789
	2019 Estimated Employee Population per Business	30.7	19.5	17.0
	2019 Estimated Residential Population per Business	4.4	11.7	17.8

This report was produced using data from private and government sources deemed to be reliable. The information herein is provided without representation or warranty.