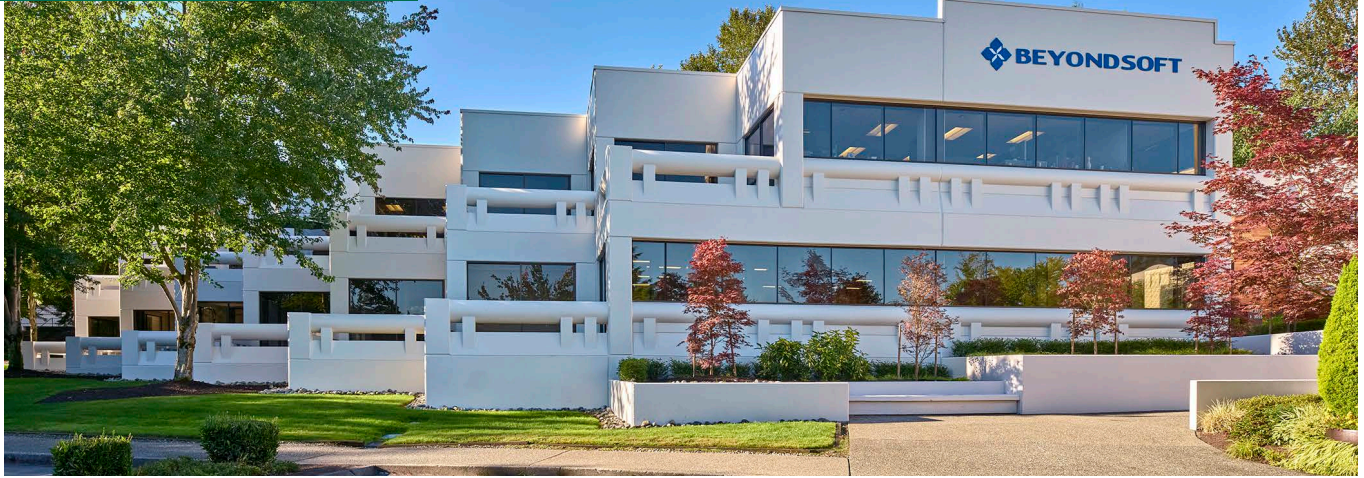


FOR LEASE

CORPORATE CAMPUS EAST

3025 - 3075
112TH AVENUE NE
Bellevue, WA 98004

ALL NEW FINISHES IN LOBBY



PROPERTY HIGHLIGHTS

- + 2020 Estimated Operating Expense:
 - Building 3025: \$10.94/SF
 - Building 3055: \$10.72/SF
- + Class A office space
- + 4/1,000 RSF parking ratio
- + Great access to both SR-520 and I-405
- + Minutes from downtown Kirkland and Bellevue
- + Hotels and restaurants nearby
- + Park-like setting
- + Onsite deli within walking distance
- + Showers and lockers available
- + Secure bike storage on site

Available Spaces			
Building	Suite	±RSF	Availability
3025	110	4,830	Now
3055	102	1,176	Now
3055	120	1,107	Now
3055	200	2,611	Now

KENNEDY WILSON

CBRE

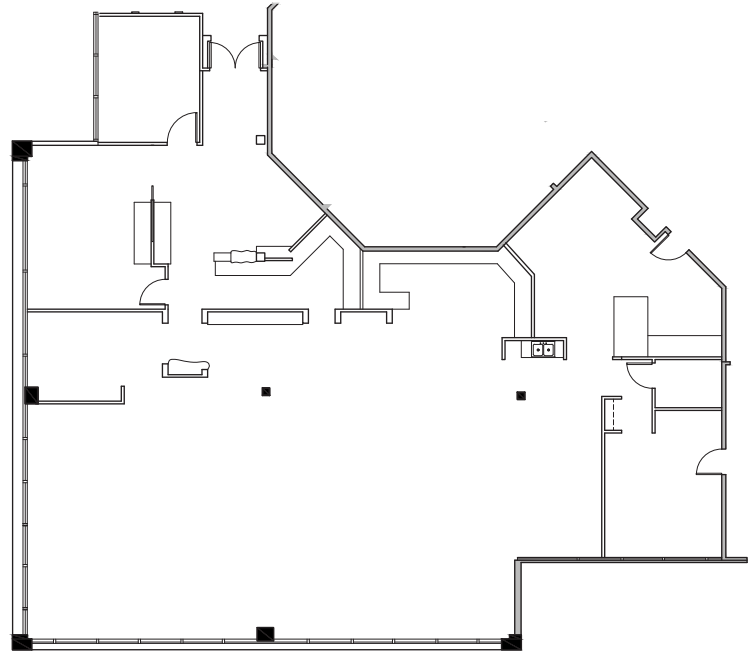
FOR LEASE CORPORATE CAMPUS EAST



FLOOR PLANS

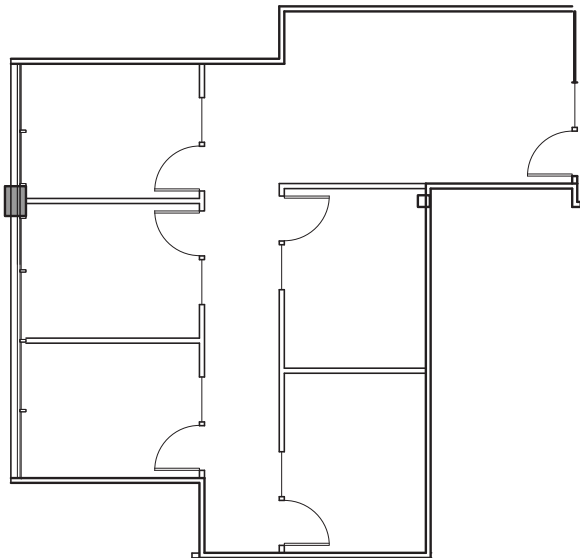
BUILDING 3025 **SUITE 110**

- + ±4,830 RSF
- + Available Now



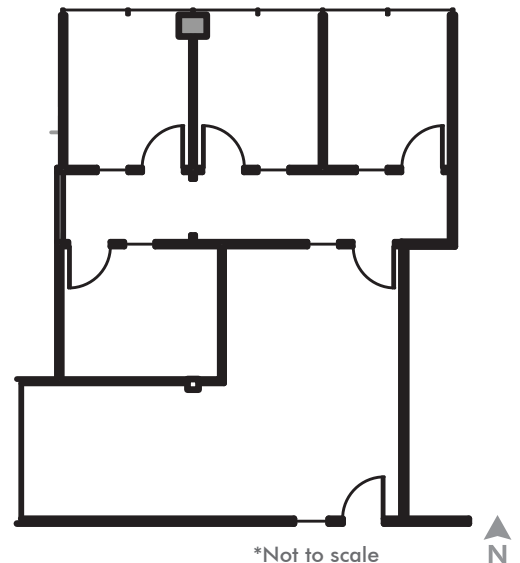
BUILDING 3055 **SUITE 102**

- + ±1,176 RSF
- + Available Now



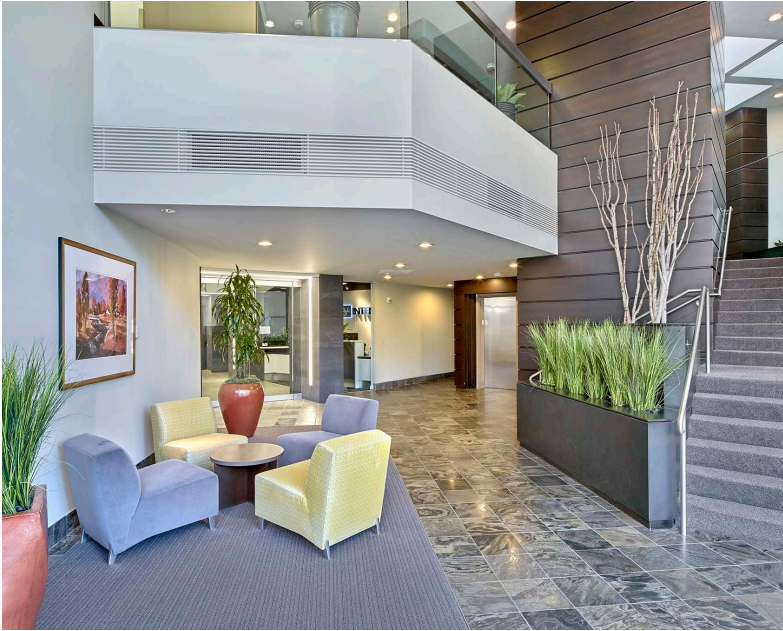
BUILDING 3055 **SUITE 120**

- + ±1,107 RSF
- + Available Now



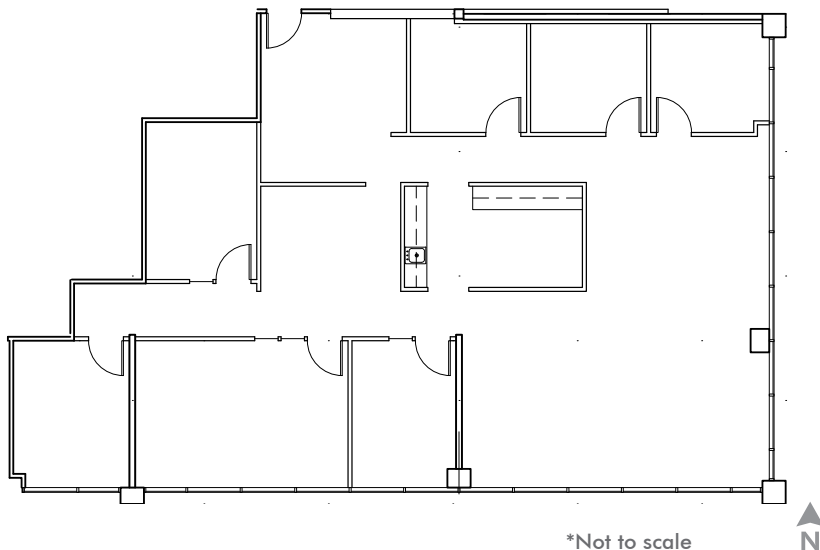
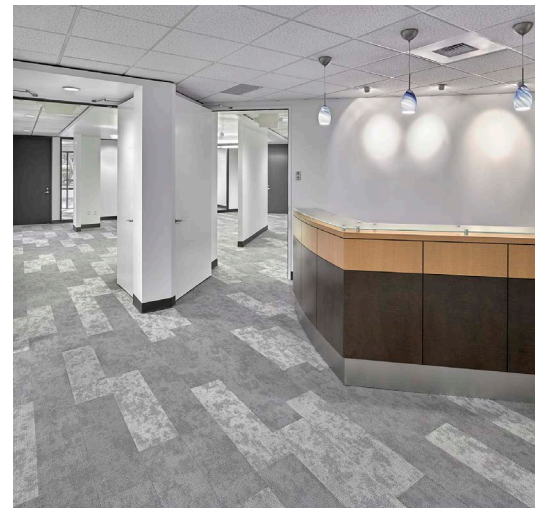


INTERIOR PHOTOS



BUILDING 3055 SUITE 200

- + ±2,611 RSF
- + Available Now



*Not to scale



FOR LEASE CORPORATE CAMPUS EAST

3025 - 3075
112TH AVENUE NE
Bellevue, Washington 98004



Travel Time/Distance to Major Metro Areas

	Miles	Minutes
Downtown Bellevue	2.5	9
SR-520	1/2	3
I-405	3.5	5
I-90	6	11
Downtown Seattle	13	22



CONTACT US

SCOTT DAVIS

Executive Vice President
+1 425 462 6912
scott.davis@cbre.com

KEVIN MURRAY

Vice President
+1 425 462 6969
kevin.murray@cbre.com

CBRE, Inc.
929 108th Avenue NE
Suite 700
Bellevue, WA 98004

© 2020 CBRE, Inc. All rights reserved. This information has been obtained from sources believed reliable, but has not been verified for accuracy or completeness. You should conduct a careful, independent investigation of the property and verify all information. Any reliance on this information is solely at your own risk. CBRE and the CBRE logo are service marks of CBRE, Inc. All other marks displayed on this document are the property of their respective owners, and the use of such logos does not imply any affiliation with or endorsement of CBRE. Photos herein are the property of their respective owners. Use of these images without the express written consent of the owner is prohibited. jg 10-1-20

KENNEDY WILSON

CBRE