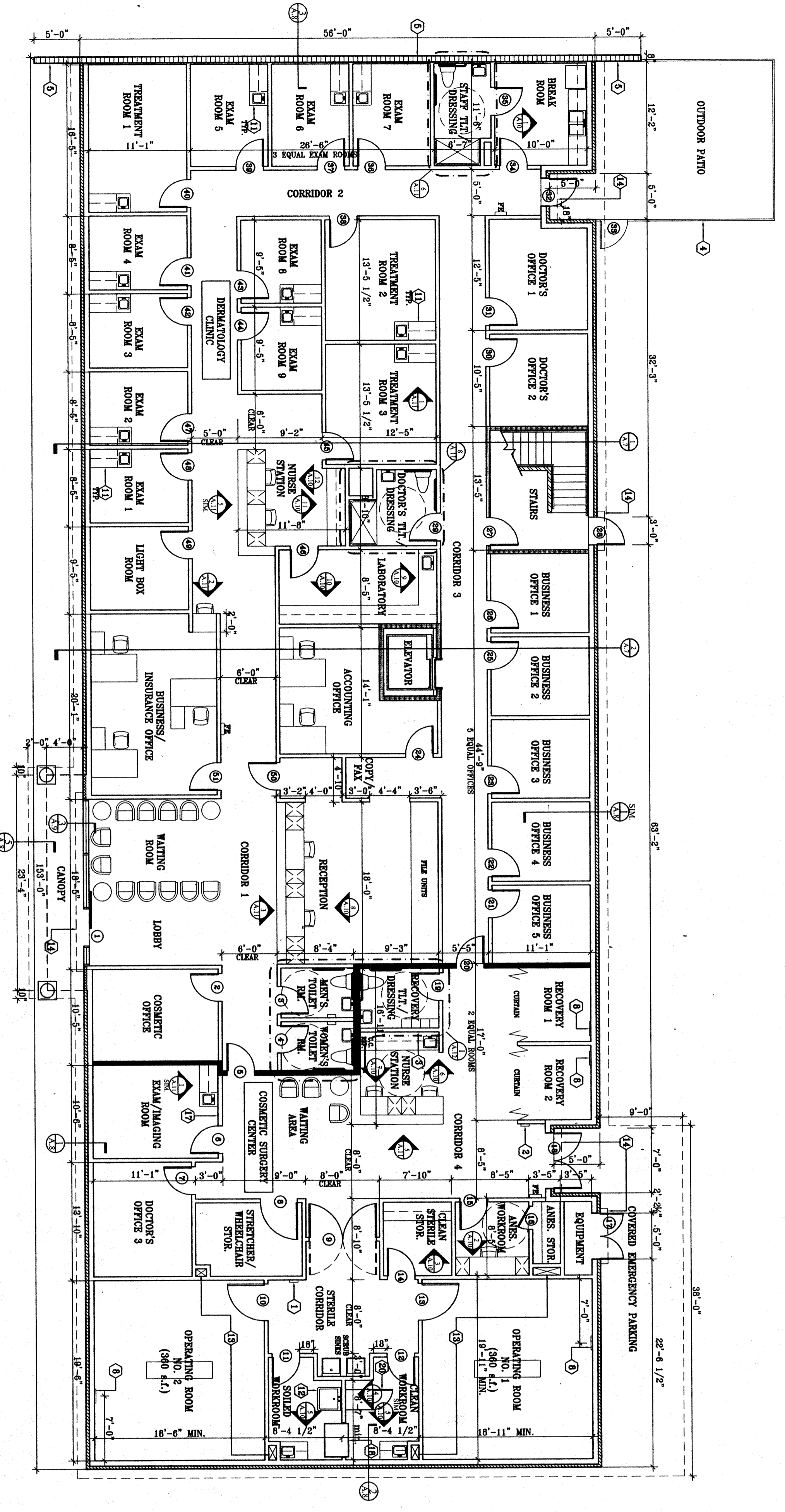


PROPOSED 2ND FLOOR PLAN  
SCALE: 1/8" = 1'-0"



PROPOSED 1st FLOOR PLAN  
SCALE: 1/8" = 1'-0"

**LEGEND**

- BRICK VENEER EXTERIOR WALL CONSTRUCTION - 2x6 WOOD STUDS WITH A 1/2" GYPSUM BOARD (AT EXTERIOR), 1/2" AIR SPACE AND STANDBY BRICK FINISH (SEE WALL DETAILS)
- EXTERIOR WALL CONSTRUCTION (4 HOUR FIRE RATED) - 4 HOUR RATED 16" x 24" CONCRETE BLOCK WALL (SCORED 8" x 8") WITH GYPSUM BOARD SECURED TO 1/2" METAL CHANNELS AT INTERIOR SIDE. (SEE WALL DETAILS)
- PLASTER EXTERIOR WALL CONSTRUCTION - 2x6 WOOD STUDS WITH A 1/2" GYPSUM BOARD OVERLAPPING WITH TYVEK STUCCO WRAP CONVENTIONAL PLASTER SYSTEM (1")
- INTERIOR WALL CONSTRUCTION (NO CEILING) - 2x4 WOOD STUDS WITH GYPSUM BOARD EACH SIDE (2x6 WHERE INDICATED BY KEYNOTE ON PLAN)
- INTERIOR WALL CONSTRUCTION (1 HOUR FIRE RATED) - 2x4 WOOD STUDS WITH 1 LAYER OF TYPE X GYPSUM BOARD EACH SIDE TO DECK AS PER UL DESIGN NO. 1596.
- INTERIOR WALL CONSTRUCTION (2 HOUR FIRE RATED) - 2x4 WOOD STUDS WITH 2 LAYERS OF TYPE X GYPSUM BOARD EACH SIDE TO DECK AS PER UL DESIGN NO. 1594.
- INTERIOR WALL CONSTRUCTION - 2x4 WOOD STUDS WITH GYPSUM BOARD EACH SIDE & WOOD WALL CAP FINISHED WALL HEIGHT AT 4'-0" ABOVE FINISHED STAIR.
- SEMI-FINISHED FIRE EXTINGUISHER CABINET & FIRE EXTINGUISHER

**NOTE TO CONTRACTOR:**  
GYPSUM BOARD ON ALL WALLS TO EXTEND 1 FOOT ABOVE FINISHED CEILING.  
CEILING

**OUTPATIENT FACILITY:**  
1st FLOOR: 4,120 S.F.  
2nd FLOOR: 1,768 S.F.  
TOTAL SQUARE FOOTAGE: 9,888 S.F.

- KEYNOTES**
- 1 MEDICAL GAS ZONE VALVE FOR BOTH OPERATING ROOMS (CONVERTER LOCATION THROUGH RECEPTION AREA TO BE DETERMINED IN ACCORDANCE WITH ALL ADA STANDARDS)
  - 2 MEDICAL GAS ZONE VALVE FOR TWO RECOVERY ROOMS (SHALL BE MOUNTED IN ACCORDANCE WITH ALL ADA STANDARDS)
  - 3 THREE MEDICAL GAS ALARMS (1 FOR EACH ZONE VALVE OPERABLE AND 1 GENERAL ALARM) SHALL BE MOUNTED IN ACCORDANCE WITH ALL ADA STANDARDS.
  - 4 SIX FOOT HIGH CEDAR WOOD FENCE
  - 5 PAINT EXTERIOR EXPOSED SURFACES OF BLOCK WALL
  - 6 NOT USED
  - 7 FOOTPRINT OF FIRST FLOOR (BELOW)
  - 8 MEDICAL GAS WALL OUTLETS MOUNTED AT 48" A.F.F. (SEE WALL DETAILS)
  - 9 AIR CONDITIONER CONDENSING UNITS (SEE MECH. DWGS)
  - 10 EMERGENCY POWER GENERATOR (SEE MECH. DWGS)
  - 11 MULTIPLEX WITH RECESSED STAINLESS STEEL HAND SINK (TYPICAL AT ALL EXAM AND TREATMENT ROOMS)
  - 12 CLINICAL FLUSHING SINK (SEE MECH. DWGS)
  - 13 RETURN AIR CHASSIS SERVING OPERATING ROOM (SEE MECH. DWGS FOR CLEAN SIZES OF CHASSIS)
  - 14 ROLL-UP SECURITY GATE AT ALL ENTRANCES/EXITS TO BUILDING (SEE DETAILS)
  - 15 ELEVATOR POWER UNIT
  - 16 ELEVATOR POWER UNIT DISCONNECT SWITCH (SEE MECH. DWGS)
  - 17 BUILD OUT TOP WALL OF LADING ROOM AS NECESSARY TO MATCH FINISH WITH THICKNESS OF 2 HOUR FIRE RATED WALL.
  - 18 PASS-THE-YARDER/DISCONNECTOR UNIT (SEE ELEVATOR CONTRACTOR TO PROVIDE ALL MECH. MECH. FINISHING, ETC. REQUIREMENTS FOR THE PARTIAL EXTERIOR PLASTER WALL TO ENCLOSE AREA BELOW EXTERIOR CANOPY (SEE ELEVATIONS))
  - 19 INTERIOR STAIRS/RECEPTION COMPARTMENT TO PROVIDE ALL MECH. MECH. FINISHING, ETC. REQUIREMENTS FOR THE SPECIFIC MODEL OWNER IS TO ACQUIRE.