



2,746 SF Office Space
Lease Rate: \$16.00 PSF (Full Service)

Office space less than two blocks from 72nd & Dodge. Covered parking and conveniently located with all services in the immediate area. Professional atmosphere in nice, well-kept building.

Michael P. Earl
Principal
(402) 548 4005
mearl@lundco.com

Trey MacKnight
Associate
(402) 548 4079
trey.macknight@lundco.com

450 Regency Parkway, Suite 200
Omaha, NE 68114
+1 402 393 8811
lundco.com

Independently Owned and Operated / A Member of the Cushman & Wakefield Alliance

Cushman & Wakefield Copyright 2019. No warranty or representation, express or implied, is made to the accuracy or completeness of the information contained herein, and same is submitted subject to errors, omissions, change of price, rental or other conditions, withdrawal without notice, and to any special listing conditions imposed by the property owner(s). As applicable, we make no representation as to the condition of the property (or properties) in question.



Availability

Lease Rate	\$16.00 SF (Full Service)
Total Available	2,746 SF

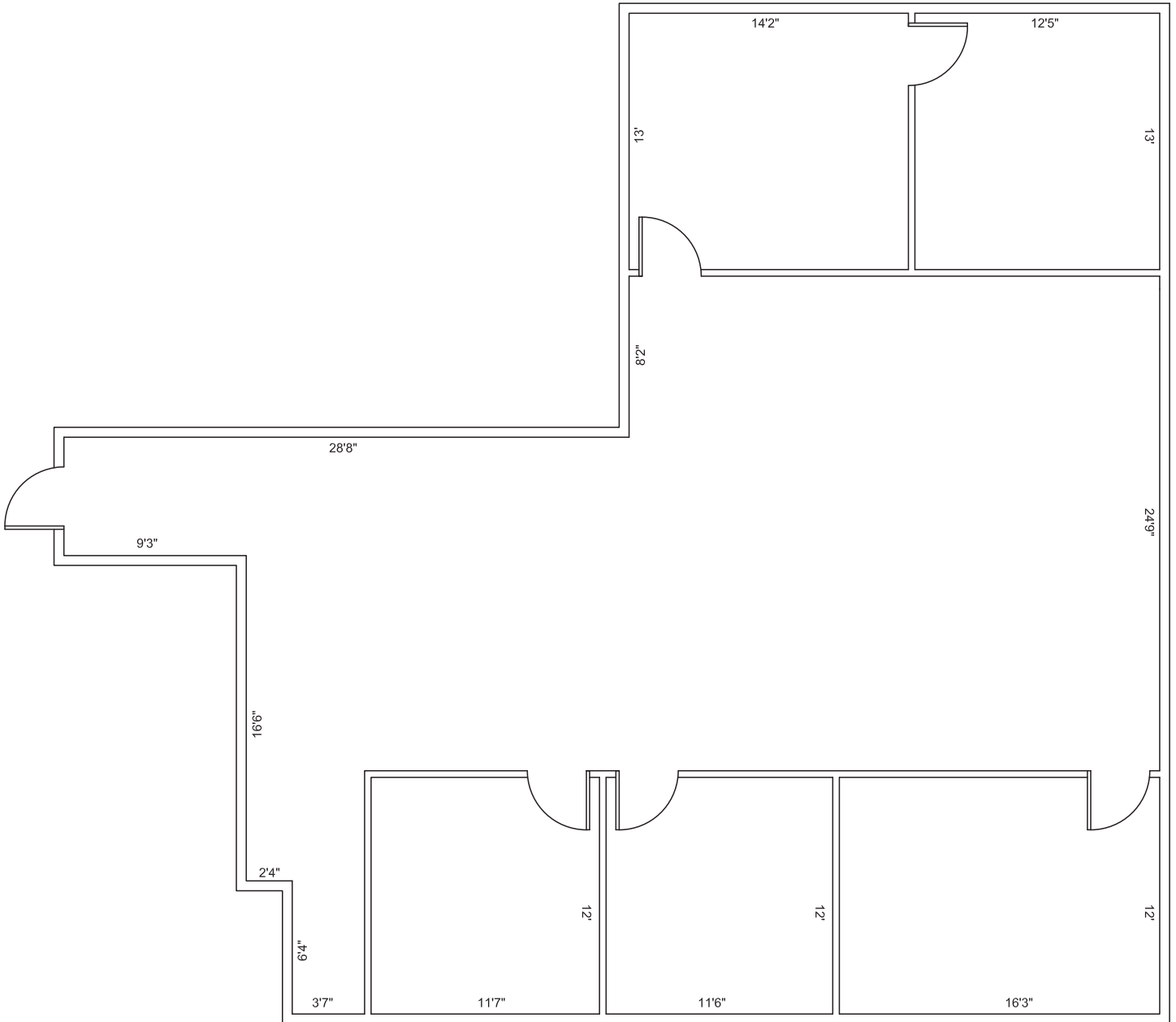
Property Highlights

Building Size	15,370 SF
Year Built	1986
No. of Floors	2
Total Site Area	0.52 AC
Zoning	GI
Parking	3.25:1000 SF

Demographics

	Population	Median HH Income	No. of Households
1-mile	9,303	\$50,138	4,042
3-mile	107,817	\$51,180	49,554
5-mile	293,040	\$47,876	129,488

Floor Plan



Interior Photos



Main Foyer



Space Available
Open Office Layout



Covered Parking