

# FOR LEASE

651 Sleater Kinney Rd SE  
Lacey, WA 98503



## SEARS BOX

Blake Weber | Don Whittles | Tim Weber



First Western Properties—Tacoma Inc. | 253.472.0404  
6402 Tacoma Mall Blvd, Tacoma, WA 98409 | fwp-inc.com

651 SLEATER KINNEY RD SE:

- OPTION 1 74,338 SF
- OPTION 2 65,678 SF | 9,100 SF
- OPTION 3 41,186 SF | 25,492 SF | 9,100 SF

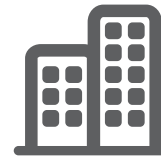
- Zoning: WD (Woodland District)
- Parking Ratio: 4.5/1000
- Retail, Mixed Use, Office, and Hotel all approved uses
- Incredible freeway visibility
- Great synergy with Target, Kohls, Marshalls, Famour Footwear, and more



Population



Average HH Income

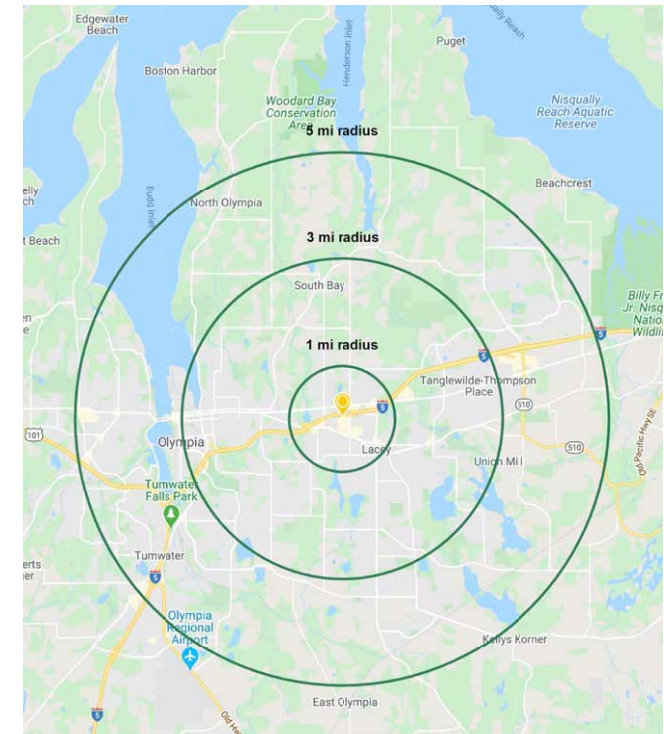


Daytime Population

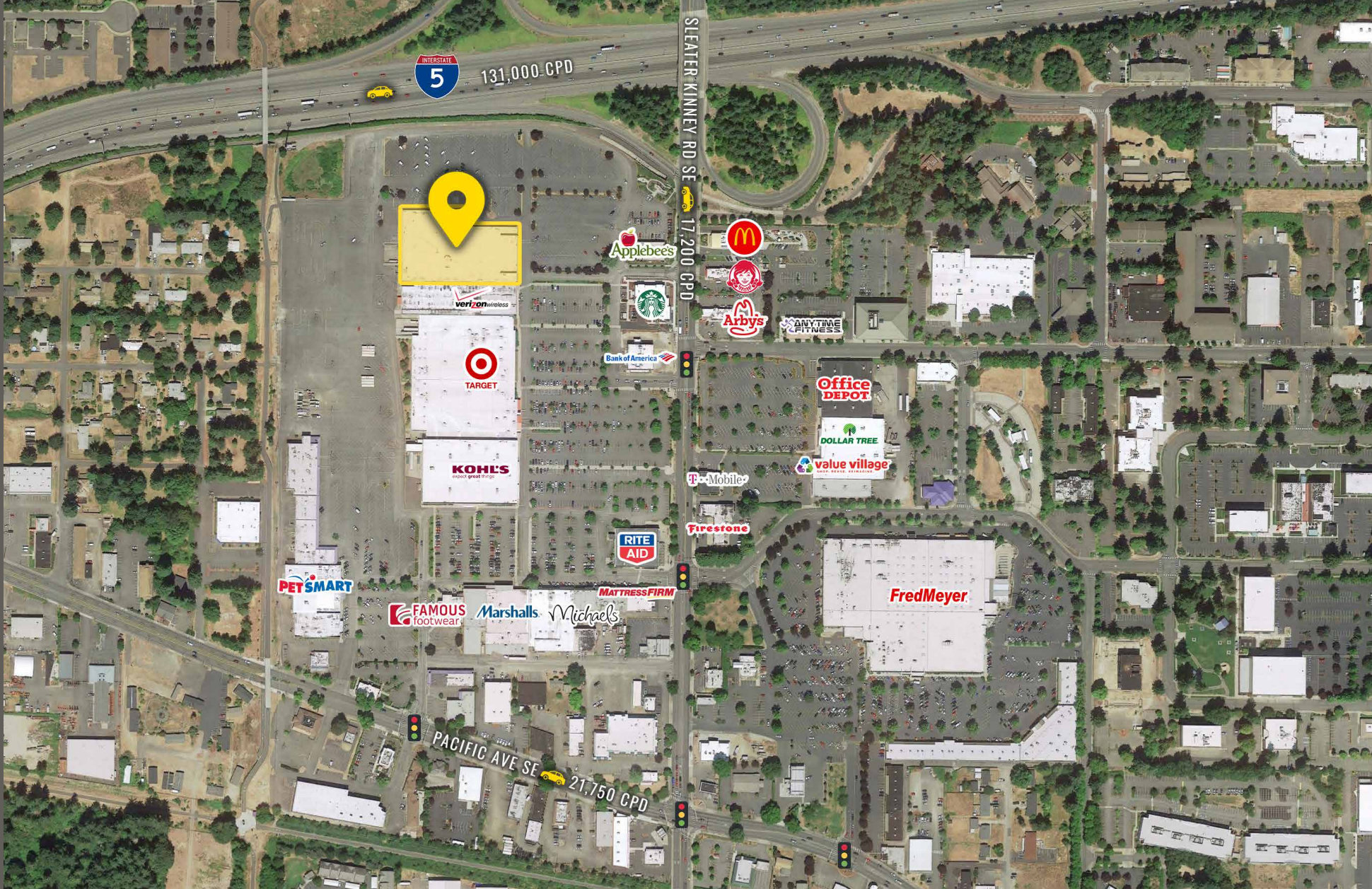
Regis - 2020

	Population	Average HH Income	Daytime Population
Mile 1	8,861	\$61,052	19,705
Mile 3	66,313	\$90,406	62,924
Mile 5	161,517	\$89,764	134,904

TENANTS



LOCATION DETAILS



Located in the Lacey Retail Core



Located just off I-5 with 131,000 CPD

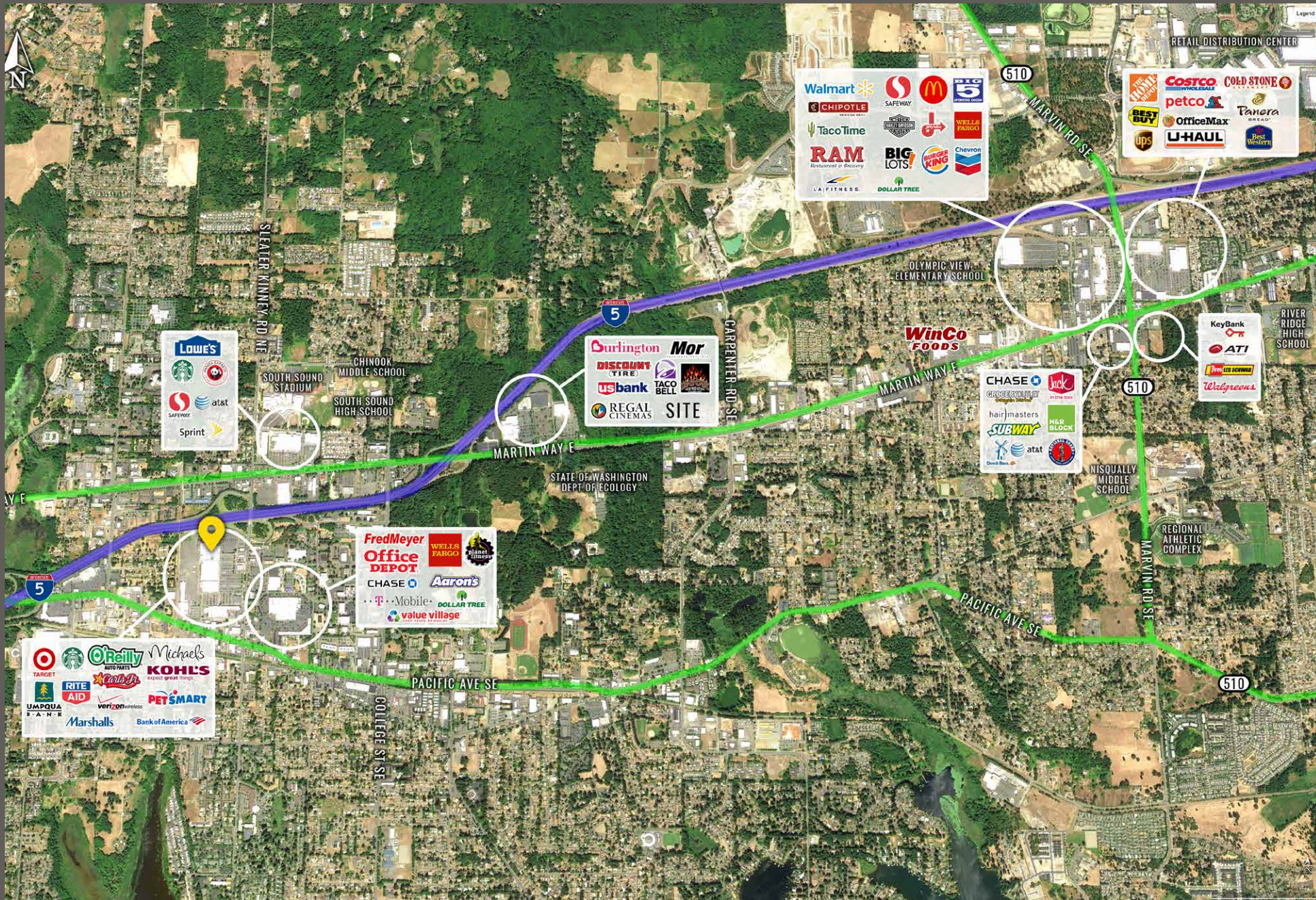


21,750 CPD Pacific Ave SE



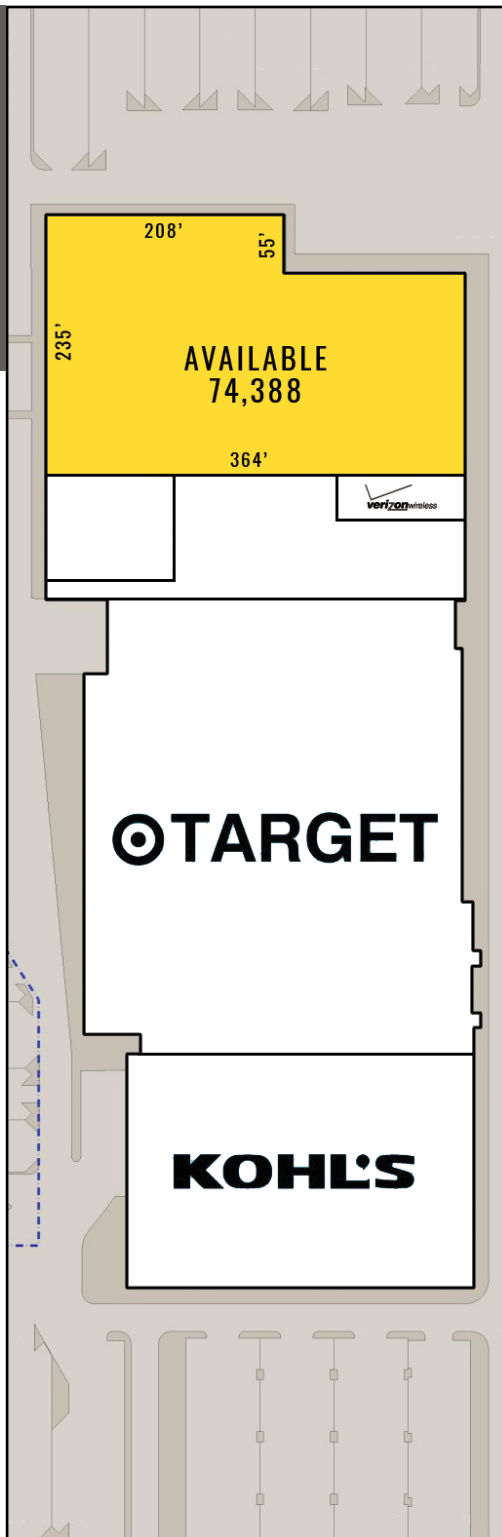
17,200 CPD Sleater Kinney Rd SE

# LOCATION AERIAL

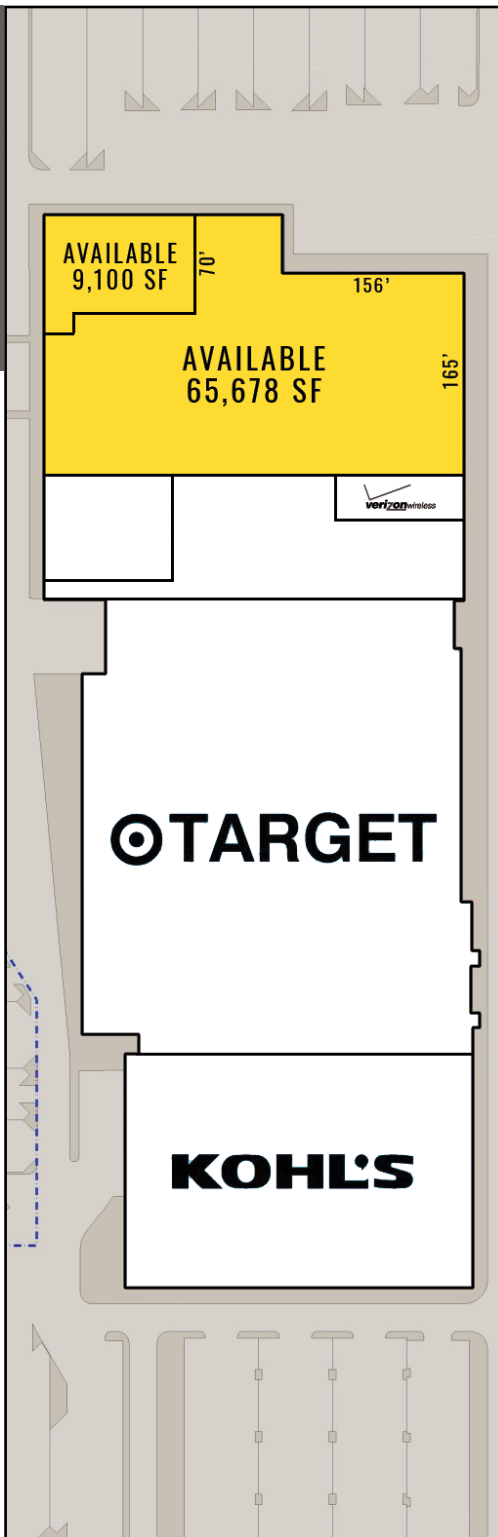


# SITE PLAN

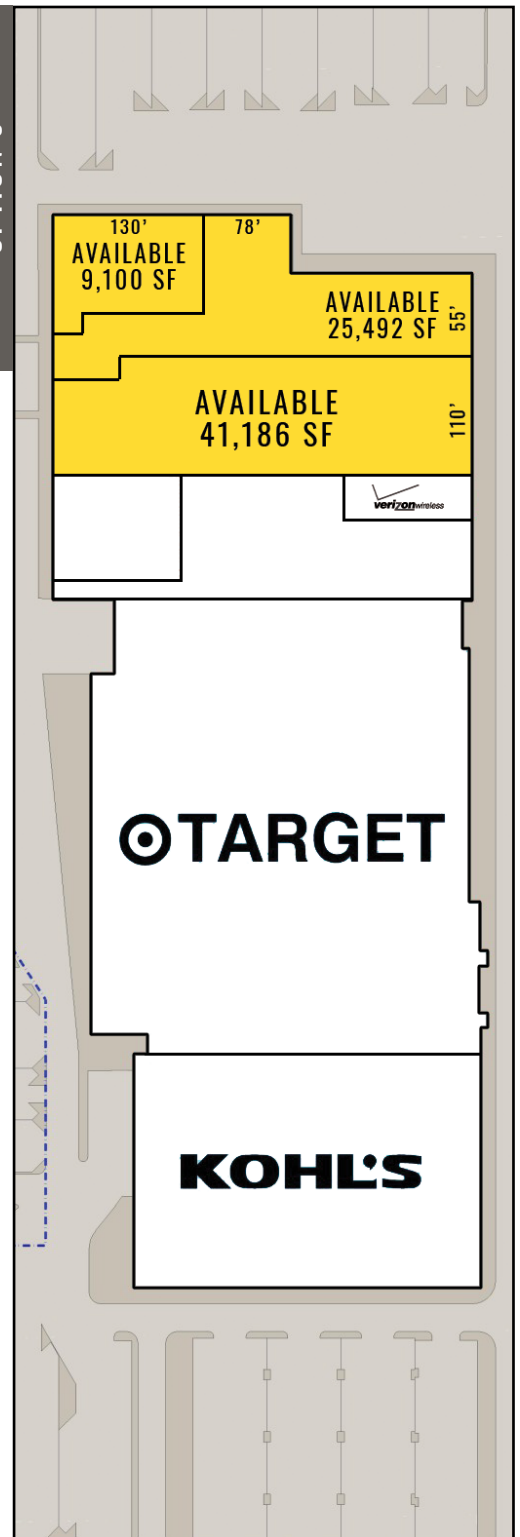
OPTION 1



OPTION 2



OPTION 3



\*DRAWINGS ARE NOT TO SCALE



**LACEY, WA** is situated on the southern tip of the Puget Sound offering unlimited opportunities for outdoor recreation with the adjoining 3,7000-acre Nisqually National Wildlife Refuge. Lacey residents are highly educated, community-oriented, and enjoy the highest median household income of any city in Thurston County. Businesses have taken notice and economic development has flourished. Six times over the last eight years, quarterly employment growth has ranked within the top 15% of the 325 largest US metropolitan counties.

TACOMA | KIRKLAND | PORTLAND | SEATTLE



**RELATIONSHIP FOCUSED. RESULTS DRIVEN.**

**BLAKE WEBER**

253.284.3646  
bweber@firstwesternproperties.com

**DON WHITTLES**

253.471.5509  
dwhittles@firstwesternproperties.com

**TIM WEBER**

253.471.5502  
tweber@firstwesternproperties.com



First Western Properties—Tacoma Inc. | 253.472.0404  
6402 Tacoma Mall Blvd, Tacoma, WA 98409 | fwp-inc.com

© First Western Properties, Inc. DISCLAIMER: The above information has been secured from sources believed to be reliable, however, no representations are made to its accuracy. Prospective tenants or buyers should consult their professional advisors and conduct their own independent investigation. Properties are subject to change in price and/or availability without notice.